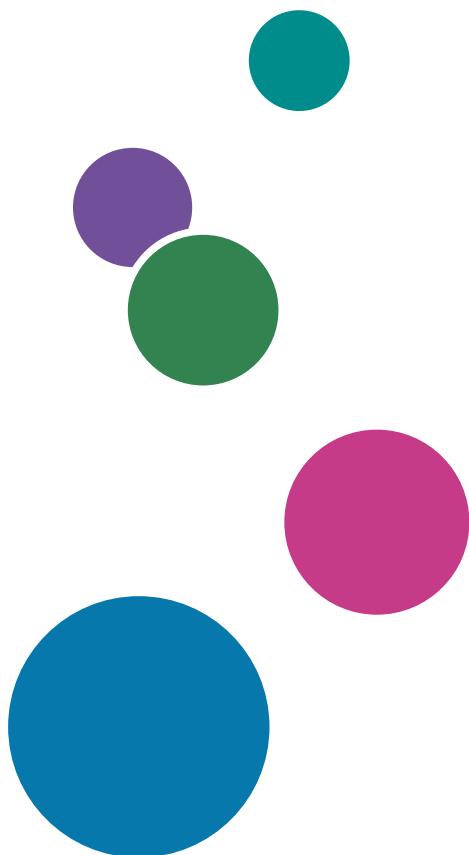




Installation Guide

Setup Overview	1
Setting Up the RICOH Auto Color Adjuster	2
Setting Up the Required Applications	3
Connecting Devices	4
Machine Settings	5
Initial Settings	6
Troubleshooting when Configuring Settings	7
Updating the RICOH Auto Color Adjuster	8
Replacing the Computer Connected to the Machine	9
Uninstalling the Applications	10

For information not in this manual, refer to the Help System in your product.



Preface

Publications for This Machine

Additional information about the RICOH Auto Color Adjuster is available in other publications.

Instruction Manuals

These instruction manuals are included:

- *RICOH Auto Color Adjuster: Safety Information*
This guide describes precautions for safe and proper use of the machine, as well as various regulations and environmental measures. Read this manual before using the machine.
- *RICOH Auto Color Adjuster: Installation Guide*
This guide describes the installation procedure of various applications, and the settings that need to be configured before you can use this machine. Read this manual before you start using the machine.
- *RICOH Auto Color Adjuster: User Guide*
This guide describes the functions of the machine and how to operate each function. It also describes the solutions for resolving the causes of displayed error messages.
- *RICOH Auto Color Adjuster: Quick Guide*
This guide describes the basic operations of the machine and the functions that are frequently used. It also describes the solutions for resolving the causes of displayed error messages.
- The RICOH Auto Color Adjuster release notes
These release notes provide information about the RICOH Auto Color Adjuster release, including new functions and updates, known limitations, problems, and workarounds, and code change requests.

The guides are available in English, Japanese, Dutch, French, German, Italian, and Spanish. The release notes are available only in English.

You can download the publications from the [RICOH Software Information Center \(https://help.ricohsoftware.com/swinfocenter/\)](https://help.ricohsoftware.com/swinfocenter/) or from the help menu inside the product.

RICOH Auto Color Adjuster Information Center

The Information Center contains topics that help administrators, supervisors, and operators learn about, install, and use RICOH Auto Color Adjuster. The Information Center provides quick navigation and search features.

RICOH Auto Color Adjuster Help

The help system contains topics that help administrators, supervisors, and operators learn about and use RICOH Auto Color Adjuster. The RICOH Auto Color Adjuster help is available from both the application user interface and the web user interface.

Symbols Used in the Manual

This manual uses the following symbols:



This symbol indicates points that you must pay attention to when using the machine. It also indicates explanations of likely causes of paper misdeeds, damage to originals, or items that might lead to loss of data.



This symbol indicates supplementary explanations of the machine functions, and instructions on resolving user errors.



Indicates a potentially hazardous situation which, if instructions are not followed, might result in minor or moderate injury or damage to property.

[Bold]

Bold type inside square brackets indicates the names of keys, menus, menu items, field labels, settings, and buttons.

[]

Square brackets indicate the names of keys, menus, menu items, field labels, settings, and buttons.

Italic

Italic type indicates variables that you must replace with your own information.

Monospace

Monospace type indicates computer input and output and file names.

Abbreviations Used in This Manual

API

Application Programming Interface

AVE

Average

C

Cyan

CMYK

Cyan, Magenta, Yellow, Key (Black)

CPU

Central Processor Unit

DFE

Digital Front End

EXE

Executable

GB

Gigabyte

GCR

Gray Component Replacement

GPL

General Public License

HTTPS

Hyper Text Transfer Protocol Secure

ID

Identifier

ICC

International Color Consortium

IP

Internet Protocol

ISO

International Standard Organization

K

Black

M

Magenta

MIM

Media-Ink-Metamode

mm

Millimeter

MAX

Maximum

PC

Personal Computer

PDF

Portable Document Format

RAM

Random Access Memory

REST

Representational State Transfer

RIP

Raster Image Processor

SSL

Secure Socket Layer

TCP

Transmission Control Protocol

TIFF

Tagged Image File Format

UAC

User Account Control

USB

Universal Serial Bus

VPC

Validation Print Creation

Y

Yellow

Important

To the maximum extent permitted by applicable laws, in no event will the manufacturer be liable for any damages whatsoever arising out of failures of this product, losses of documents or data, or the use or non-use of this product and operation manuals provided with it.

Make sure that you always copy or have backups of important documents or data. Documents or data might be erased due to your operational errors or malfunctions of the machine. Also, you are responsible for taking protective measures against computer viruses, worms, and other harmful software.

In no event will the manufacturer be responsible for any documents created by you using this product or any results from the data executed by you.

Cautions Regarding This Guide

- The contents of this guide are subject to change without notice.
- Some illustrations or explanations in this guide could differ from your product due to improvements or changes in the product.
- Depending on which country you are in, certain units may be optional. For details, please contact your local dealer.
- No part of this document may be duplicated, replicated, reproduced in any form, modified, or quoted without prior consent of the supplier.

Trademarks

Adobe and Acrobat are either registered trademarks or trademarks of Adobe Systems Incorporated in the United States and/or other countries.

Apache and Tomcat are either registered trademarks or trademarks of the Apache Software Foundation in the United States and/or other countries.

Command WorkStation, Fiery, the Fiery logo, EFI are trademarks of Electronics for Imaging, Inc. in the U.S. and/or certain other countries.

FOGRA is a registered trademark of FOGRA Forschungsgesellschaft Druck e.V.

Google Chrome is a trademark of Google LLC.

GRACol[®] is a registered copyright of Idealliance.

Intel Core is a trademark of Intel Corp. in the United States and/or other countries.

Microsoft, Windows, Visual C++, BitLocker are either registered trademarks or trademarks of Microsoft Corp. in the United States and/or other countries.

The product names of Windows 10 are as follows:

- Microsoft[®] Windows[®] 10 Home
- Microsoft[®] Windows[®] 10 Pro
- Microsoft[®] Windows[®] 10 Enterprise
- Microsoft[®] Windows[®] 10 Education
- Microsoft[®] Windows[®] 10 Mobile
- Microsoft[®] Windows[®] 10 Mobile Enterprise

The product names of Windows 11 are as follows:

- Microsoft[®] Windows[®] 11 Home
- Microsoft[®] Windows[®] 11 Pro
- Microsoft[®] Windows[®] 11 Pro Education
- Microsoft[®] Windows[®] 11 Pro for Workstations
- Microsoft[®] Windows[®] 11 Enterprise
- Microsoft[®] Windows[®] 11 Education

Japan Color is a registered trademark of the Japanese Society of Printing Science and Technology and the Japan Printing Machinery Association.

Other product names used herein are for identification purposes only and might be trademarks of their respective companies. We disclaim any and all rights to those marks.

Microsoft product screenshots reprinted with permission from Microsoft Corporation.

TABLE OF CONTENTS

Preface

Publications for This Machine	1
Symbols Used in the Manual	2
Abbreviations Used in This Manual	2
Important	4
Cautions Regarding This Guide	4
Trademarks.....	5

1 Setup Overview

Applications Required for Using the Machine	11
Files Stored on the Provided USB Flash Memory	11
Computer System Requirements	12
Usage Environment of the Computer.....	13
Setup Flow.....	13

2 Setting Up the RICOH Auto Color Adjuster

Registering a Password for Connecting to the Cloud for License Management.....	15
Downloading and Installing the RICOH Auto Color Adjuster	15
Checking the IP Address	16
Checking the Port Number.....	17

3 Setting Up the Required Applications

Installing the Fiery Command WorkStation	19
Obtaining the Fiery Command WorkStation	19
Installing the Fiery Command WorkStation	19
Hiding the Fiery Command WorkStation	21
Setting Up the ColorGATE Productionserver	22
Configuring the REST Server of the ColorGATE Productionserver.....	23
Installing the GPL Ghostscript.....	25
Installing Ghostscript.....	25

4 Connecting Devices

Connecting the Machine to the Computer.....	29
Using Two or More Machines.....	30

5 Machine Settings

Displaying the Machine Settings Screen	31
Switching the Language to Display the RICOH Auto Color Adjuster	31
Setting Items on the Machine Settings Screen	32

Machine Settings.....	32
Scan Settings.....	33
Auto Color Adjuster Server Settings.....	34
ProductionServer Settings.....	35
Basic Authentication.....	36
Firmware Update.....	36
Backup/Restore/Log.....	37
Software Used.....	38
License Management.....	39
Configuring the Machine Settings.....	40
Configuring the Network Settings.....	43
Creating the Server Certificate for Auto Color Adjuster.....	44
Specifying ProductionServer Settings.....	46
Specifying Basic Authentication.....	47

6 Initial Settings

Displaying the Initial Settings Screen.....	49
Changing the Default Display Language of Initial Settings.....	50
Initial Settings Screens.....	51
Setting Items on the Add/Edit Chart Screen.....	53
Details of the Manage Location Screen.....	55
Screen Configuration of the Manage Printer Screen.....	56
Setting Items on the Add/Edit Printer Screen.....	57
Screen Configuration of the Manage Paper Screen.....	58
Setting Items on the Add Paper Screen.....	59
Setting Items on the Set Threshold Screen.....	60
Setting Items on the Miscellaneous Screen.....	65
Configuring Initial Settings.....	65
Displaying the Initial Settings Screen.....	66
Configuring Basic Settings in Initial Settings.....	67
Registering the Chart in Initial Settings.....	68
Registering the PDF File for the Chart to the DFE.....	68
Editing the Chart Registered in Initial Settings.....	70
Deleting the Chart Registered in Initial Settings.....	70

7 Troubleshooting when Configuring Settings

Troubleshooting (Machine Settings).....	71
---	----

When You Cannot Start Machine Settings.....	71
When a Message Is Displayed in Machine Settings	71
Troubleshooting (Initial Settings).....	72
When the Initial Settings Screen Is Not Displayed	72
When a Message Is Displayed in Initial Settings.....	73
8 Updating the RICOH Auto Color Adjuster	
<hr/>	
Updating the RICOH Auto Color Adjuster Version	75
Creating a Backup and Restoring RICOH Auto Color Adjuster	76
Creating a Backup of the RICOH Auto Color Adjuster Settings.....	76
Restoring the RICOH Auto Color Adjuster Settings.....	77
9 Replacing the Computer Connected to the Machine	
<hr/>	
Operation Workflow for Computer Replacement.....	79
Creating a Data Backup	79
Creating a Backup of the Setting Information of RICOH Auto Color Adjuster and Calibration Model File	79
Creating a Backup of the ColorGATE Productionserver License File.....	81
Restoring the Data	82
Restoring the Setting Information of RICOH Auto Color Adjuster and Calibration Model File	82
Restoring the ColorGATE Productionserver License File.....	83
Activating the RICOH Auto Color Adjuster	84
10 Uninstalling the Applications	
<hr/>	
Uninstalling the RICOH Auto Color Adjuster	87
Removing the Path to GPL Ghostscript from the System Environment Variables.....	87

1. Setup Overview

- Applications Required for Using the Machine
- Computer System Requirements
- Setup Flow

This section describes the applications required for using the machine, the system requirements, and the setup flow.

Applications Required for Using the Machine

To use the machine, install the following applications on the computer that is connected to the machine via the provided USB cables.

Application	Description
RICOH Auto Color Adjuster	Dedicated application including the [Quick Color Adjustment] , [Color Sample Matching] , and [Colorimetry] functions.
Fiery Command WorkStation Version: 6.8.0.514 or later	Application required to use the [Quick Color Adjustment] function of the RICOH Auto Color Adjuster. The Fiery Command WorkStation is used for the automatic registration of profiles when using a Fiery DFE.
ColorGATE Productionserver Version: 23.00, Build: 15040 or later	Application required to use the [Quick Color Adjustment] function of the RICOH Auto Color Adjuster. The ColorGATE Productionserver is used for the automatic generation of profiles, and the user does not need to operate it.
GPL Ghostscript Version: 9.27	Application required to convert the original data (PDF) to image data in TIFF format, using the [Color Sample Matching] function of the RICOH Auto Color Adjuster. The user does not need to operate the GPL Ghostscript.

Note

- Do not update the ColorGATE Productionserver and the Fiery Command WorkStation, as the RICOH Auto Color Adjuster might not operate properly.
- For the system requirements of the computer on which you install the applications, see [Computer System Requirements, p. 12](#).
- For details about installing each application, see [Setup Flow, p. 13](#).

Files Stored on the Provided USB Flash Memory

A USB flash memory is provided with this machine. The following is the folder structure and the stored files:

CAUTION

- **Keep USB flash memory devices out of reach of children. If a child accidentally swallows an USB flash memory device, consult a doctor immediately.**
- **Store the USB memory in a safe and secure place, and do not lose it.**

Folder	File	Description
chart	RACA_TestChart.pdf	The document data used for [Color Sample Matching] using the provided color swatch print samples.
model	MI_Calib_xxxxxxx.mdl (xxxxxxx indicates the serial number of the scan unit.)	The conversion file to convert the measured value by the machine into color information. Used to set up the machine.
qca	This folder contains the color charts for creating a profile used for [Quick Color Adjustment] and color charts for color verification when you register 101 or more charts in Initial Settings. Decompress the file, and use the PDF file with the number designated in Initial Settings.	
	chartPDF_Fogra.zip	The color chart for color verification used to verify with Fogra are compressed in this file.
	chartPDF_GRACoL.zip	The color chart for color verification used to verify with GRACoL are compressed in this file.
	chartPDF_JC.zip	The color chart for color verification used to verify with JapanColor are compressed in this file.
	chartPDF_Profile.zip	A compressed file containing the color charts for creating a profile.
sp	sp_factorydef_xxxxxxx.csv	The factory default adjustment settings.
	Lab_[cpxxxxxxx_nn].xlsm	This file is used by your customer engineer if a problem occurs on the machine.

Computer System Requirements

This section describes the system requirements of the computer to install applications.

★ Important

- Set up a dedicated computer to run the RICOH Auto Color Adjuster only. A problem can occur if you use this computer for other purposes.
- Configure User Account Control (UAC) accordingly so only the data necessary for business purposes is accessible.

Item		Requirements
Operating system		Windows 10 Pro 64 bit, Version 2004 or higher Windows 11 Pro
Web browser		Google Chrome, v93 or higher
Hardware	CPU	Intel Core i7-8650U or higher
	RAM	16 GB or more
	Disk space	256 GB or more
	Resolution	1,920 × 1,080 pixels or more
	USB port	One USB 3.0 port, one USB 2.0/2.1 port

Usage Environment of the Computer

It is recommended to use the computer that is connected to the machine with the environment described below. If you connect a computer that does not conform to the conditions below, third parties might view your login ID, password, and other information.

- Hard disk encryption (BitLocker) setting
- Firewall settings
 - Configure the port that is used for HTTPS to accept access from trusted origins only and deny access from other origins.
 - Configure ports 443 and 15180 to deny access in the receiving rule.
- Enforcing an appropriate user and login management on the computer

Setup Flow

This section describes the setup flow after installing the machine.

★ Important

- After you install the Fiery Command WorkStation and the ColorGATE Productionserver, connect the machine and the computer using the two provided USB cables. Otherwise, the device driver is not recognized properly.
- In a configuration with multiple machines, first configure the **[Machine Settings]**, **[Scan Settings]**, and **[Initial Settings]** for the server, and then for the client computer. You can also configure the **[Initial Settings]** for all the machines together from the server.
 1. Install the RICOH Auto Color Adjuster. For more information, see [Setting Up the RICOH Auto Color Adjuster, p. 15](#).
 2. Install the Fiery Command WorkStation. For more information, see [Obtaining the Fiery Command WorkStation, p. 19](#).

Note

- The Fiery Command WorkStation is required only if you are using a Fiery DFE. If you are using the TotalFlow Print Server or another DFE, you do not need to install the Fiery Command WorkStation.

3. Set up the ColorGATE Productionserver.

1. Open the [ColorGATE Support \(https://support.colorgate.com\)](https://support.colorgate.com) website using a web browser and install the ColorGATE Productionserver.
2. Activate the ColorGATE Productionserver.
3. Configure the ColorGATE Productionserver. For more information, see [Configuring the REST Server of the ColorGATE Productionserver, p. 23](#).

Note

- For information about installing and activating the ColorGATE Productionserver, refer to the ColorGATE user documentation.
 - Do not update the ColorGATE Productionserver, as the RICOH Auto Color Adjuster might not operate properly.
 - You can install the ColorGATE Productionserver before the Fiery Command WorkStation.
4. Install the GPL Ghostscript. For more information, see [Installing the GPL Ghostscript, p. 25](#).
 5. Connect the machine and the computer using two USB cables.
 6. Configure the **Machine Settings** and the **Scan Settings**. For more information, see [Displaying the Machine Settings Screen, p. 31](#).
 7. Configure the Initial Settings. For more information, see [Displaying the Initial Settings Screen, p. 49](#).
 1. To configure the location settings, select **[Manage Location]**.
 2. To configure the printer settings, select **[Manage Printer]**.
 3. To configure the paper settings, select **[Manage Paper]**.
 4. To add a color chart, select **[Add Chart]**.
 5. To change the judgement criteria of the **[Quick Color Adjustment]**, select **[Set Threshold]**.
 6. To change the location where to save profiles, select **[Miscellaneous]**.

2. Setting Up the RICOH Auto Color Adjuster

- Registering a Password for Connecting to the Cloud for License Management
- Downloading and Installing the RICOH Auto Color Adjuster


Install the RICOH Auto Color Adjuster to a computer to operate the machine from it.

Registering a Password for Connecting to the Cloud for License Management

★ Important

- When a message notifying you of the expiration of the password appears, follow the instructions displayed on the screen for the notification e-mail to be sent. If you cannot sign in to the cloud from the notification e-mail that is sent, contact your service representative.
1. Open the notification e-mail sent to the administrator and click **[Sign in to your account]**.
 2. Enter the **[Email]** and **[Password]**, and click **[SIGN IN]**.

↓ Note

- See the notification e-mail for the password.
3. In **[New Password]**, enter a password that is eight characters or longer, and includes an upper and lower case letter, number, and special character.
 4. Enter the password again in **[Confirm password]** and click **[Change password]**.
 5. Click the **[User]** button (.
 6. Click **[Sign out]**.

↓ Note

- You will receive emails reminding you to change the password periodically even after you register a password.
- The specified password is used when accessing the cloud to manage the licenses. For more information, see [Activating the RICOH Auto Color Adjuster, p. 84](#).

Downloading and Installing the RICOH Auto Color Adjuster

Install the RICOH Auto Color Adjuster to the computer being connected to the machine.

1. Download the installer from the manufacturer website, and save it on the computer to be connected to the machine.
2. Log in to the computer using a user account with administrator privileges, and then close all applications.
3. Execute the downloaded AutoColorAdjusterSetup_Verxxx.msi.

↓ Note

- XXX varies depending on the date when the file is released.
- The installation wizard is displayed.
4. Click **[Next]**.



m582om0603

5. Select **[I accept the terms in the License Agreement]**, and then click **[Next]**.
6. Enter the **[IP Address:]** and **[Port Number:]**. For information about checking the IP address and the port number, see [Checking the IP Address, p. 16](#) and [Checking the Port Number, p. 17](#).
7. Click **[Next]**.
8. Click **[Install]**.
The installation starts.
9. When a screen asking whether to restart the computer is displayed, click **[Yes]**.
10. When the installation is complete, click **[Finish]**.
11. Click **[Yes]** on the screen asking whether to restart.

↓ Note

- Do not start the RICOH Auto Color Adjuster after restarting the computer. The RICOH Auto Color Adjuster does not start properly until ColorGATE Productionserver is installed.
- You cannot use the **[Quick Color Adjustment]** function with a Fiery controller unless you install the Fiery Command WorkStation first.
- Use a static IP address on the computer. The RICOH Auto Color Adjuster does not start up properly if the IP address of the computer changes.

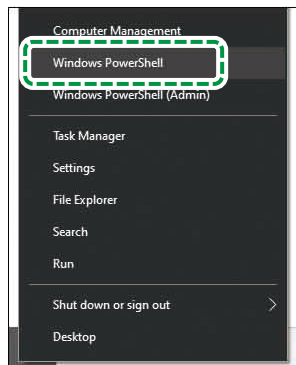
Checking the IP Address

↓ Note

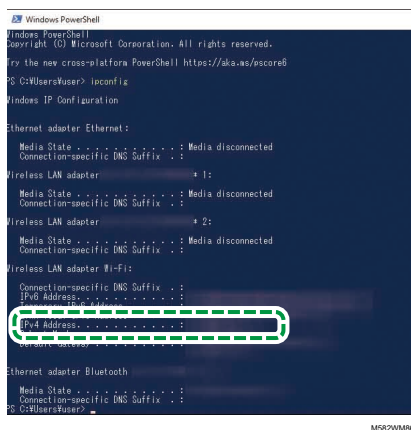
- When using a single machine, check the IP address on the computer on which you are installing the software.
- When using multiple machines together, check the IP address on the computer being used as the server.

To check the IP address:

1. Right-click **[Start]** and select **[Windows PowerShell]**.



2. Enter **ipconfig**, and press the **Enter** key.
3. Check the IP address, and enter the value in **[IP Address:]** on the wizard screen.



Checking the Port Number

Note

- When using a single machine, check the port number on the computer on which you are installing the software.
- When using multiple machines together, check the port number on the computer being used as the server.

To check the port number:

1. In the Windows PowerShell dialog, enter **netstat -nao**, and then press the **Enter** key.
2. Check the Local Address of the line in which the Protocol is TCP and the External Address is 0.0.0.0.

3. Setting Up the Required Applications

- Installing the Fiery Command WorkStation
- Setting Up the ColorGATE Productionserver
- Installing the GPL Ghostscript

The RICOH Auto Color Adjuster requires these applications:

- Fiery Command WorkStation
- ColorGATE Productionserver
- GPL Ghostscript

Installing the Fiery Command WorkStation

Install the Fiery Command WorkStation to the computer so that it can link with the Fiery controller (color controller).

If you are not installing the Fiery Command WorkStation because you are using it already, and when a DFE server is registered in the Fiery Command WorkStation, click **Server** → **Remove Fiery server** in the Fiery Command WorkStation.

3

Obtaining the Fiery Command WorkStation

To obtain the Fiery Command WorkStation:

1. Access the EFI website.
2. Download the installer for the Fiery Command WorkStation and save it on the computer to connect to the machine.

Installing the Fiery Command WorkStation

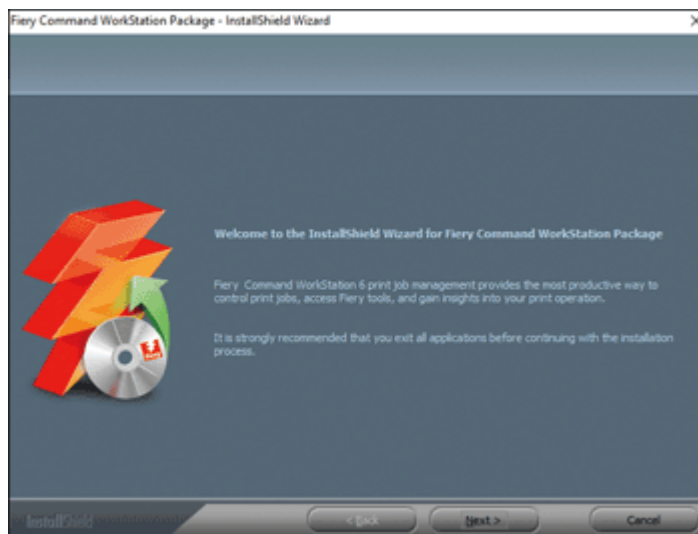
Install Fiery Command WorkStation to the computer to be connected to the machine.

 **Note**

- The antivirus software might interrupt the installation. In this case, disconnect the network cable or set the wireless LAN to airplane mode to disconnect the computer from the network temporarily, disable the antivirus software, and then try the installation again.

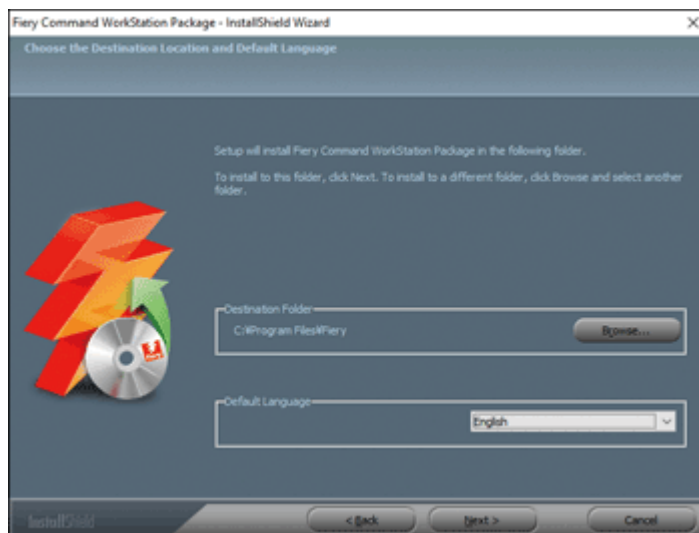
To install the Fiery Command WorkStation:

1. Log in to the computer using a user account with administrator privileges, and then close all applications.
2. Run the obtained installer.
The file is decompressed, and CWSPackage6_8.exe is saved.
3. Execute CWSPackage6_8.exe.
The installation wizard is displayed.
4. Click **[Next]**.



m582om0601

5. Select **[I accept the terms of the license agreement]**, and then click **[Next]**.
6. Specify the installation destination and the default display language, and then click **[Next]**.



m582om0602

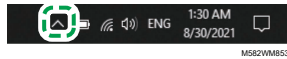
7. Check if there is enough free disk space for installation, and then click **[Next]**.
8. On the screen for selecting whether to create a shortcut in Startup, click **[Yes]**.
9. Click **[Install]**.
The installation starts.
10. When the installation is complete, select **[Yes, I want to restart my computer now.]**, and then click **[Finish]**.
After restarting, the Fiery Command WorkStation screen is displayed.
11. Close the Fiery Command WorkStation screen.

Hiding the Fiery Command WorkStation

If the Fiery Command WorkStation is updated, the RICOH Auto Color Adjuster might not operate properly. It is recommended to hide the **[Fiery Software Manager]** icon in the notification area of the task bar to avoid unexpected updates.

To hide the Fiery Command WorkStation:

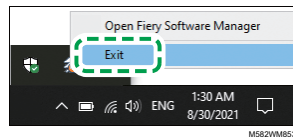
1. In the notification area of the taskbar, click the **[Indicator]** button (▲).



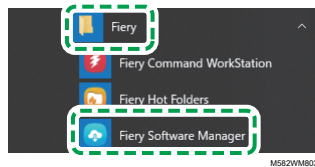
2. Right-click the **[Fiery Software Manager]** button.



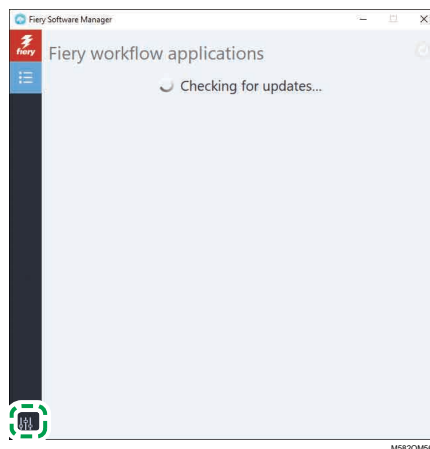
3. Click **[Exit]**.



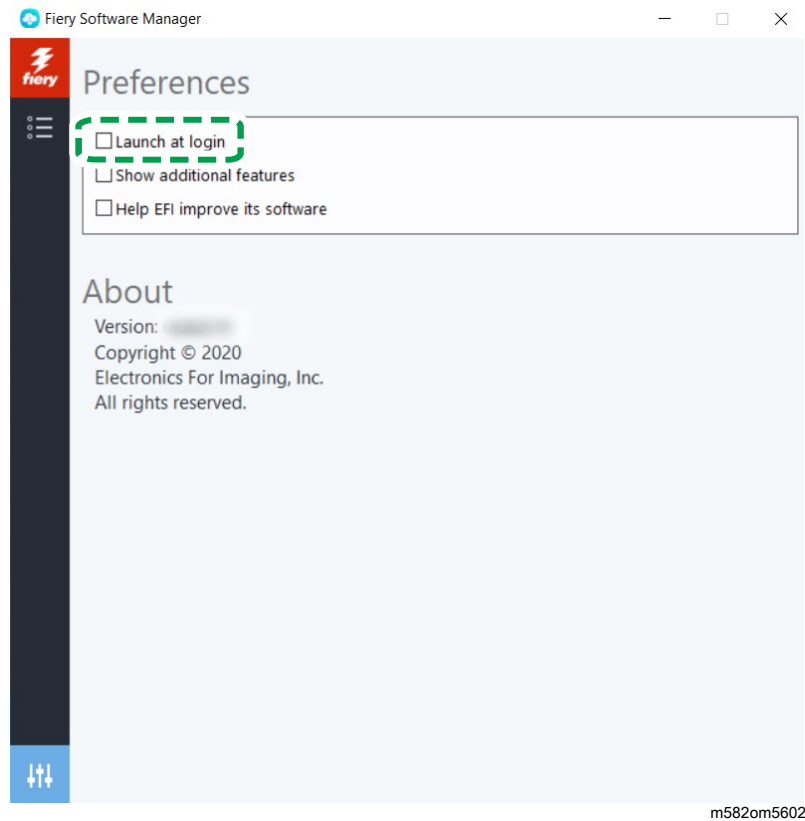
4. Click **Start** → **Fiery** → **Fiery Software Manager**.



5. When the update screen is displayed, click the **[Preferences]** button that is enabled when you click **[Update]**.



6. Clear the **[Launch at login]** checkbox, and then close the window.



7. Restart Windows, and then confirm that the button is not displayed in the notification area of the taskbar.

Setting Up the ColorGATE Productionserver

To set up the ColorGATE Productionserver, access the ColorGATE support website. Prepare the information about the user and the license number beforehand.

↓ Note

- For information about installing and activating the ColorGATE Productionserver, refer to the [ColorGATE user documentation \(https://www.colorgate.com/fileadmin/user_upload/pdf/Guides_V23/SHL-SW/EN_ColorGATE_Getting_Started_SHL-SW_V23.pdf\)](https://www.colorgate.com/fileadmin/user_upload/pdf/Guides_V23/SHL-SW/EN_ColorGATE_Getting_Started_SHL-SW_V23.pdf).
 1. In a web browser, open the [ColorGATE Support \(https://support.colorgate.com\)](https://support.colorgate.com) website.
 2. Register the user.
 3. Register the product.

↓ Note

- For Printer, select [**PDF FLAT LOW-RES**].
 - For the license usage mode, select [**Offline mode**].
4. Download the ColorGATE Productionserver installer.
 5. Install the ColorGATE Productionserver on the computer that you are using for creating Quick Color Adjustment profiles.

↓ **Note**

- In the License Type Selection dialog, select [**Single Host License / Software (SHL-SW)**].
6. Activate the ColorGATE Productionserver.
 7. Configure the REST server of the ColorGATE Productionserver. For more information, see [Configuring the REST Server of the ColorGATE Productionserver, p. 23](#).

Configuring the REST Server of the ColorGATE Productionserver

Copy the files required for configuration, and then set up the REST Server of the ColorGATE Productionserver.

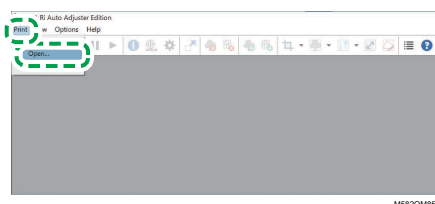
↓ **Note**

- Disable the automatic updates of the ColorGATE Productionserver.
1. Copy the following five files from the source folder to the destination folder.

Source folder	File	Destination folder
C:\RicohAutoColorAdjuster\inst\PSsetting	PDF FLAT LOW-RES.cos	C:\ProgramData\ColorGATE Software\Productionserver23\Settings
	Ricoh Auto Color Adjuster_v1.10.cmp	C:\ProgramData\ColorGATE Software\Productionserver23\Profiles
C:\RicohAutoColorAdjuster\inst\PSsetting\ccx	Ricoh Auto Color Adjuster.ccx	C:\ProgramData\ColorGATE Software\Productionserver23\Profiles\Linearisation
	Ricoh Auto Color Adjuster.ccx.t03	
	RICOH Auto Color Adjuster.inf	

↓ **Note**

- If the ProgramData destination folder is not displayed, select [**View**] in File Explorer, and then select **Show** → **Hidden Items**.
2. Double-click the [**Productionserver23**] icon on the desktop.
 3. Select **Print** → **Open....**

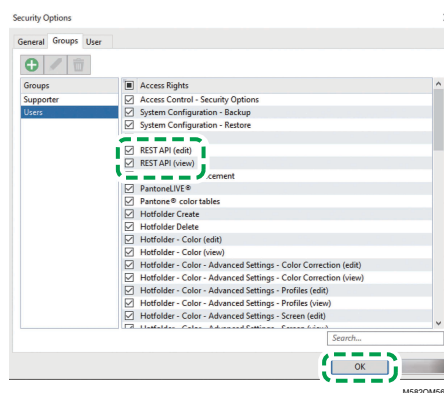


4. In the C:\ProgramData\ColorGATE Software\Productionserver23\Settings folder, select [**PDF FLAT LOW-RES.cos**].

5. Select **Options** → **MIM Administration...**
The MIM Administration dialog is displayed.
6. Select **[Import MIM Files]**, and then select **[Next]**.
7. Select **[Browse...]**, and then select Ricoh Auto Color Adjuster_v1.10.cmp in the C:\ProgramData\ColorGATE Software\Productionserver23\Profiles folder.
8. Select **[Next]**.
9. In the Choose MIM-Definitions dialog, select **[Next]** without changing the settings.
10. In the MIM-Loading Options dialog, select **[Next]** without changing the settings.
11. Select **[Finish]**.
12. Select **Options** → **Access Control** → **Security Options**.
13. If a message indicates that the Access Control Module database cannot be found, select **[OK]** and then select the C:\ProgramData\ColorGATE Software\Productionserver23\ACDB folder.
14. In the dialog for setting the password, enter **[ABC]**.
15. Enter a login name and a password, and then select **[OK]**.

Note

- The default user name and password are as follows:
 - User Name: Admin
 - Password: ABC
 - When changing the password, use from 8 through 64 single-byte alphanumeric characters.
 - If you change the user name or the password, enter the new ColorGATE Productionserver user name (login name) and password in the **[ProductionServer Settings]** section of the RICOH Auto Color Adjuster settings.
16. In the Security Options dialog, enable the access control.
 17. Select the **[Groups]** tab.
 18. Select **[REST API (edit)]** and **[REST API (view)]**, and then select **[OK]**.



19. To display the REST Server dialog, select **Options** → **REST Server...**

↓ **Note**

- If the confirmation dialog for the exception settings is displayed, select **[OK]**.

The REST Server dialog is displayed.

20. Select **[Start server automatically at startup]** and **[Refresh log list automatically]**.
21. Select **Options** → **Program Settings** → **System** tab.
22. Clear the **[Check for updates automatically]** checkbox, and then select **[OK]**.
23. Close the dialog.

↓ **Note**

- The ColorGATE Productionserver employs a self-signed certificate to protect transmitted information against malicious third parties. For greater security, it is recommended to use certificates authenticated by a Certificate Authority. When replacing the certificates, place the official certificate in the following folders. Also, configure those folders so that only users with administrator privileges can modify them.

Folder: C:\Program Files (x86)\ColorGATE Software\Productionserver23\SSL

3

Installing the GPL Ghostscript

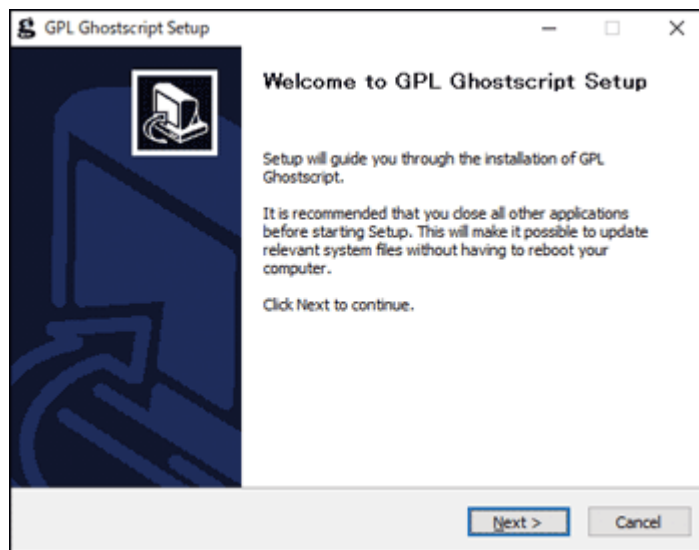
Application required to convert document data (PDF) into image data (TIFF) using **[Color Sample Matching]** of the RICOH Auto Color Adjuster. The user does not need to operate it.

Installing Ghostscript

This application is required to convert document data (PDF) into image data (TIFF) using **[Color Sample Matching]** of the RICOH Auto Color Adjuster. The user does not need to operate it.

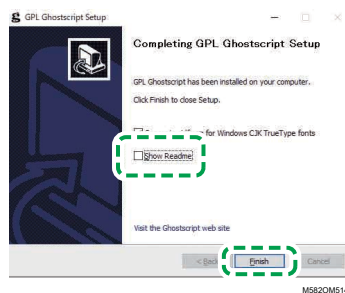
★ **Important**

- Install it when you have the license for Color Sample Matching.
 1. To download the gs927w64.exe installer, go to the [Ghostscript git repository \(https://github.com/ArtifexSoftware/ghostpdL-downloads/releases/download/g927/g927w64.exe\)](https://github.com/ArtifexSoftware/ghostpdL-downloads/releases/download/g927/g927w64.exe).
 2. On the computer connected to the machine, run the downloaded Ghostscript installer. The installation wizard is displayed.
 3. Click **[Next]**.



m582om0140

4. Confirm the content of the software license agreement, and then click **[I Agree]**.
5. Leave the install destination as is, and click **[Install]**. The installation starts.
6. Clear the **[Show Readme]** checkbox, and then click **[Finish]**.



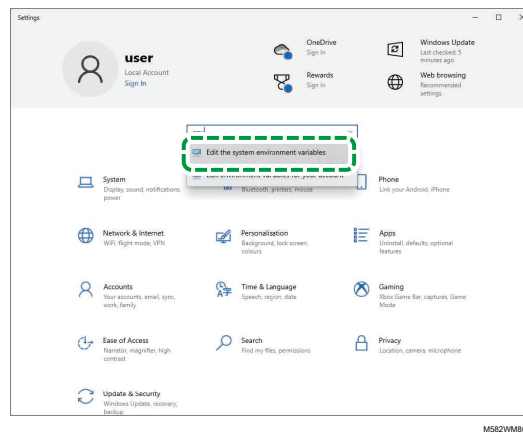
M582OM5141

Specifying the System Environment Variables

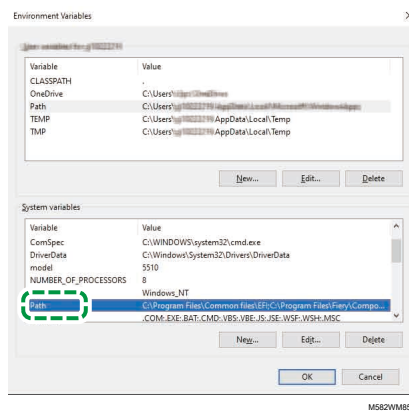
Add the path to GPL Ghostscript to the system environment variables of Windows 10.

To specify the system environment variables:

1. Click **Start** → **Settings**.
2. Enter **env** in the input box, and then click **[Edit the system environment variables]** from the options that appear.



3. Click **[Environment Variables]**.
4. Double-click **[Path]** under System variables.

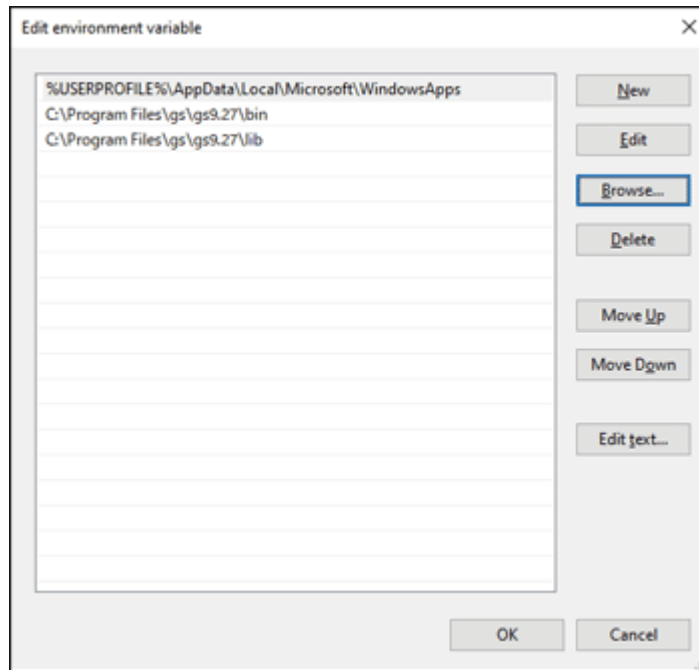


5. Click **[New]**, and then enter `C:\Program Files\gs\gs9.27\bin`.

Note

- You can specify the file by clicking **New** → **Browse...** → **This PC** in this order.

6. Click **[New]**, and then enter `C:\Program Files\gs\gs9.27\lib`.



m582wm0601

7. Click **[OK]** twice, and then close the Settings screen.

4. Connecting Devices

- Connecting the Machine to the Computer
- Using Two or More Machines

When the installation of the applications is complete, connect the machine to the computer.

Connecting the Machine to the Computer

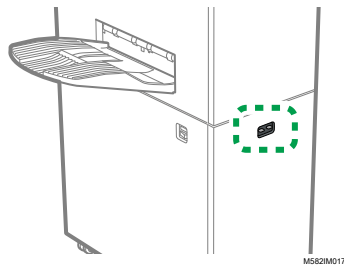
Connect the machine to the computer using the two provided USB cables.

★ Important

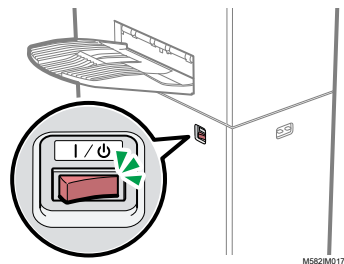
- Do not use a USB cable other than the cable provided with the machine. Proper operation of the machine is guaranteed only when it is connected to your computer via the provided USB cable.
- Do not use an USB extension cable or a hub.
- Use the USB 3.0 and USB 2.0/2.1 ports on the computer. You can also use two USB 3.0 ports, as the USB 3.0 port supports USB 2.0/2.1.

To connect the machine to the computer:

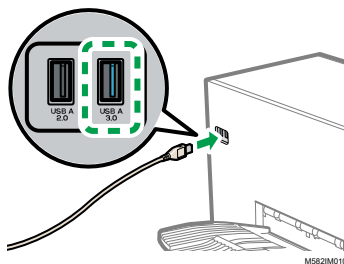
1. Make sure that the power indicator on the machine is not lit.



2. If the power indicator is lit, turn off the machine using the power switch on the left side of the machine.

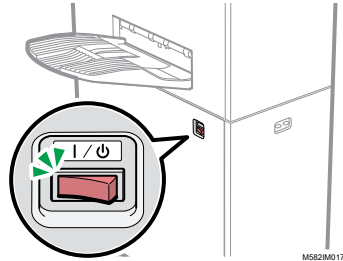


3. Connect the USB cable to the USB A 3.0 interface on the left side of the machine.



4. Connect the USB cable to the USB 3.0 port on the computer.
5. Connect the USB cable to the USB A 2.0 interface on the left side of the machine.

6. Connect the USB cable to a USB 2.0/2.1 or USB 3.0 port on the computer.
7. Make sure that the power plug of the machine is securely inserted into the outlet.
8. Turn on the machine using the power switch on the left side of the machine.

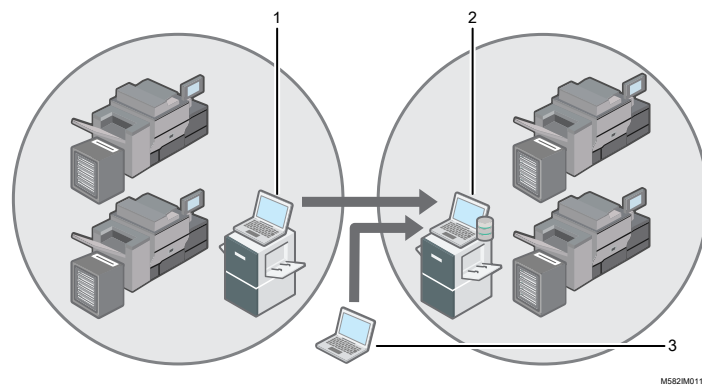


Using Two or More Machines

4

You can install machines at two or more sites and share the settings between them.

- The procedures for setting up the applications and connecting to computers in a configuration with multiple machines are the same as the procedures for a standalone configuration.
- In a configuration with multiple machines, set up one of the computers connected to the machine as the server and the others as clients. In the server, the values such as the one when Quick Color Adjustment is used on a client computer are saved.
- You can access the server from a client computer or the administrator computer and manage all printers. The following is a configuration example with two machines.



1. Client computer connected to the machine via USB
2. Server connected to the machine via USB
3. Administrator computer

Note

- Be sure to set up the IP addresses of the server correctly. For details about the setting, see [Machine Settings, p. 31](#).



5. Machine Settings

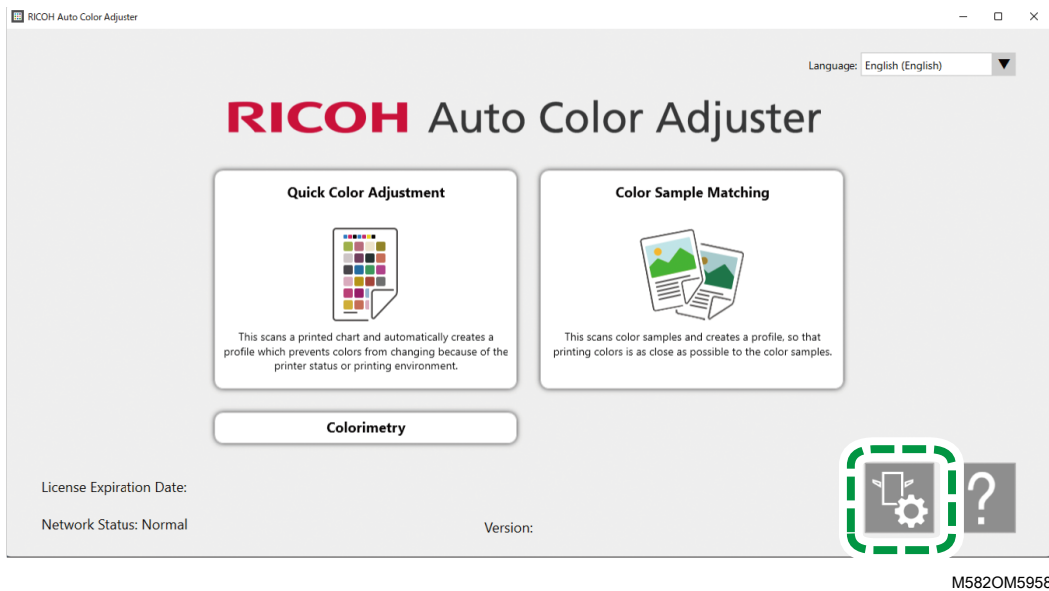
- Displaying the Machine Settings Screen
- Setting Items on the Machine Settings Screen
- Configuring the Machine Settings

Specify the IP address of the computer, paper sizes, lighting conditions for scanning documents using the machine, and other settings.

Displaying the Machine Settings Screen

Configure the settings for the machines and computers from the Machine Settings screen of the RICOH Auto Color Adjuster.

1. If the RICOH Auto Color Adjuster menu screen is not displayed, start the application using the [RICOH] icon () on the desktop.
2. Click the [Machine Settings] button ().



Switching the Language to Display the RICOH Auto Color Adjuster

1. Specify [Language:] on the RICOH Auto Color Adjuster screen.



The language that is displayed on the screen that is opened from the RICOH Auto Color Adjuster screen changes also.

Setting Items on the Machine Settings Screen

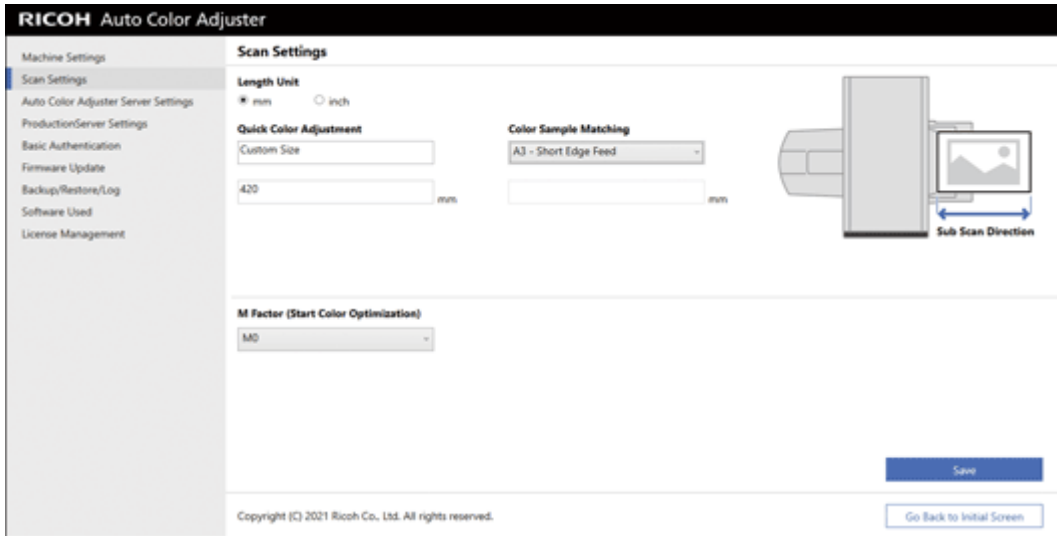
This section explains the screen configuration for each screen in Machine Settings and the setting items.

Machine Settings

m582om0626

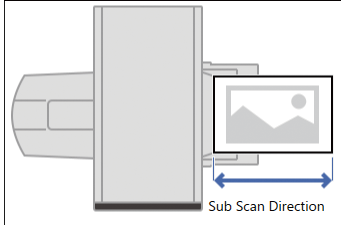
Setting Item	Description
[Machine Name]	<p>Enter the name of the machine using up to 48 characters.</p> <p>You cannot use \ / : * ? ' " < > +.</p> <p>The registered name is displayed as an option in [Machine Name] in the Add/Edit Printer screen of Initial Settings. In a configuration with multiple machines, the machine name is used to identify the machine in use.</p>
[Scan Counter]	<p>The total number of the documents scanned using the machine is displayed.</p> <p>This is not displayed when the machine is not connected to the computer or turned off.</p>
[Machine Individual Number]	<p>Displays the identification number of the machine.</p>
[Calibration Model File]	<p>The name of the calibration model file that is specified on the machine is displayed.</p> <p>This is not displayed when the machine is not connected to the computer or turned off.</p>

Scan Settings



m582om0627

5

Setting Item	Description
[Length Unit]	<p>Select [mm] or [inch] for the unit to specify the paper length along the sub scan direction of an original/chart.</p> <p>If you change the unit setting from [inch] to [mm], the setting values in [Quick Color Adjustment] and [Color Sample Matching] are rounded off at the second decimal place.</p> <p>Default: [mm]</p>
[Quick Color Adjustment]	<p>In [Quick Color Adjustment], specify the paper size of the chart to be scanned. Enter the paper length along the sub scan direction in the range between 210 and 487.7 mm (8.3 and 19.2 inches).</p> <div style="text-align: center;">  <p>m582om9550_1</p> </div> <p>Default: Custom Size 420 mm</p>

Setting Item	Description
[Color Sample Matching]	<p>In [Color Sample Matching], specify the standard size for the document to be scanned. Select the paper size, or enter the paper length along the sub scan direction in the range between 210 and 487.7 mm (8.3 and 19.2 inches).</p> <p>This can be changed for each document to be scanned in the Color Sample Matching screen.</p> <p>Default: A3 - Short Edge Feed</p>
[M Factor (Start Color Optimization)]	<p>Select the lighting conditions when scanning a chart using Quick Color Adjustment.</p> <p>Select [M0] when using [JC Digital 2011 Coated, Wedge] as the color verification standard. Specify [M1] when using [ISO12647-8 Coated V3 F51], [Verify GRACoL2013, Wedge], [Simple Gray Scale, Wedge 2013], or [ISO12647-8 Coated V3 F51].</p> <p>Color Sample Matching operates according to [M2] regardless of this setting.</p> <p>Default: [M0]</p>

Auto Color Adjuster Server Settings

RICOH Auto Color Adjuster

Machine Settings
Scan Settings
Auto Color Adjuster Server Settings
ProductionServer Settings
Basic Authentication
Firmware Update
Backup/Restore/Log
Software Used
License Management

Auto Color Adjuster Server Settings

Network Settings

IP Address:

Port Number:

[Save](#)

Change the IP address and port number of the Auto Color Adjuster server.
The port number is used for data communication on the network and must be unique for each program in a PC. The default port number is 8080. If port number 8080 is already used by another program in the PC, specify different number.

Create Server Certificate for Auto Color Adjuster

Create SSL Certificate for Auto Color Adjuster server.

[Create](#)

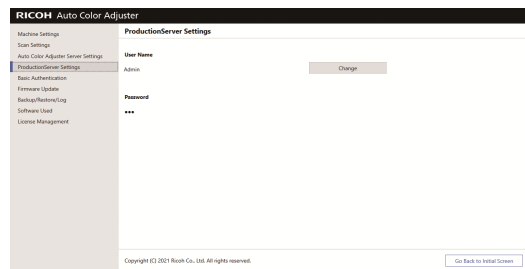
Copyright (C) 2021 Ricoh Co., Ltd. All rights reserved.

[Go Back to Initial Screen](#)

m582om0621

Setting Item	Description
[Network Settings]	Displays the IP address of the computer being used as the server that you specified while installing the product. If the IP address of the computer being used as the server has changed, enter the new address, and click [Save] .
[Port Number]	Displays the port number that you specified while installing the product. To change the port number being used, enter the new port number, and click [Save] .
[Create Server Certificate for Auto Color Adjuster]	Add an SSL certificate to improve the security of web access. You can specify for the Not secure message to not be shown when accessing the server from a client computer. To use an SSL certificate, click [Create] and specify a password.

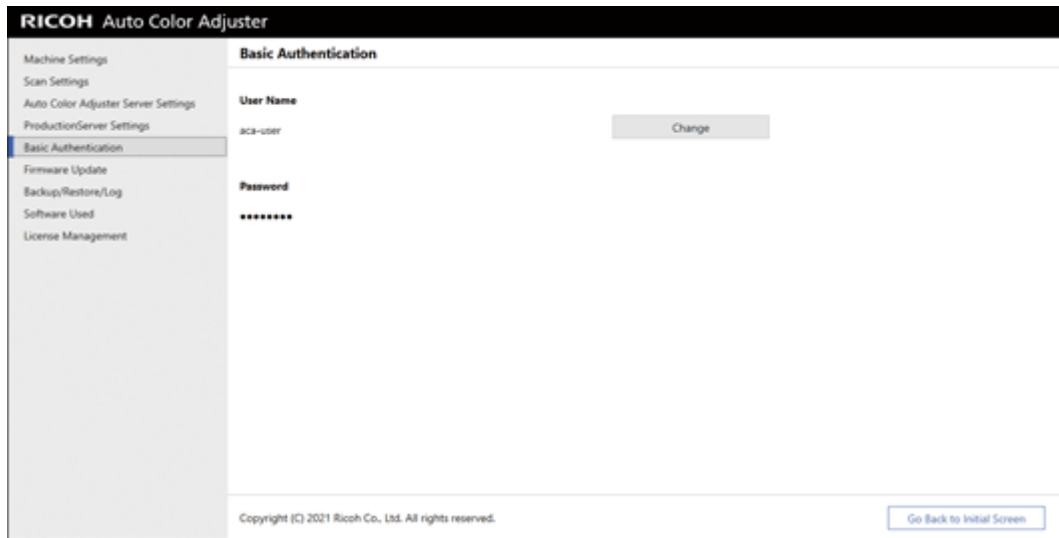
ProductionServer Settings



M582OM0622

Setting Item	Description
[User Name]	The user name to link with ColorGATE Productionserver is displayed. To change the user name on the REST server of the ColorGATE Productionserver, click [Change] , and specify the new user name. Default: [Admin]
[Password]	To change the password on the REST server of ColorGATE Productionserver, click [Change] , and specify the new password. Enter a password using 8 to 64 single-byte alphanumeric characters. Default: [ABC]

Basic Authentication



m582om0623

Setting Item	Description
[User Name]	Displays the [User Name] for Basic authentication. Use Basic authentication when displaying the Management Console screen. Click [Change] to change the [User Name] . Default: [aca-user]
[Password]	Click [Change] to change the [Password] for Basic authentication. Default: [user]

Firmware Update

Use this screen when a newer version of the machine firmware is available. It is not used in the installation process.



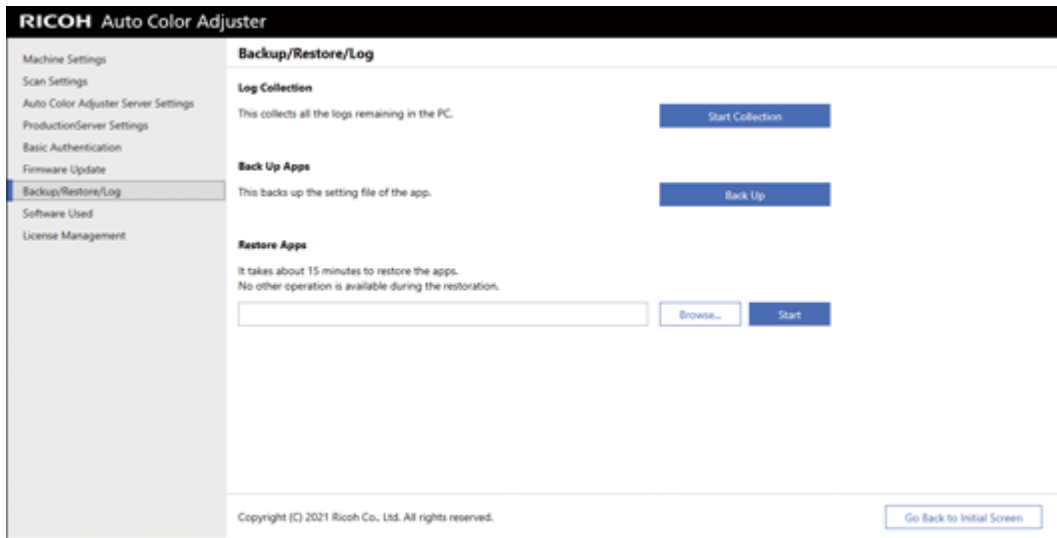
m582om0628

Setting Item	Description
<p>[Machine Version]</p> <p>[Current Version of USB Controller 1]</p> <p>[Current Version of USB Controller 2]</p>	Displays the firmware version of the machine and its USB controllers.
[Firmware Update]	Updates the firmware of the machine when a newer version is available. Click [Browse...] to select a file, and then click [Start] .

5

Backup/Restore/Log

Use this screen to contact your service representative if a problem occurs on the machine, change the settings in Machine Settings or Initial Settings, replace the computer connected to the machine, or perform other operations.



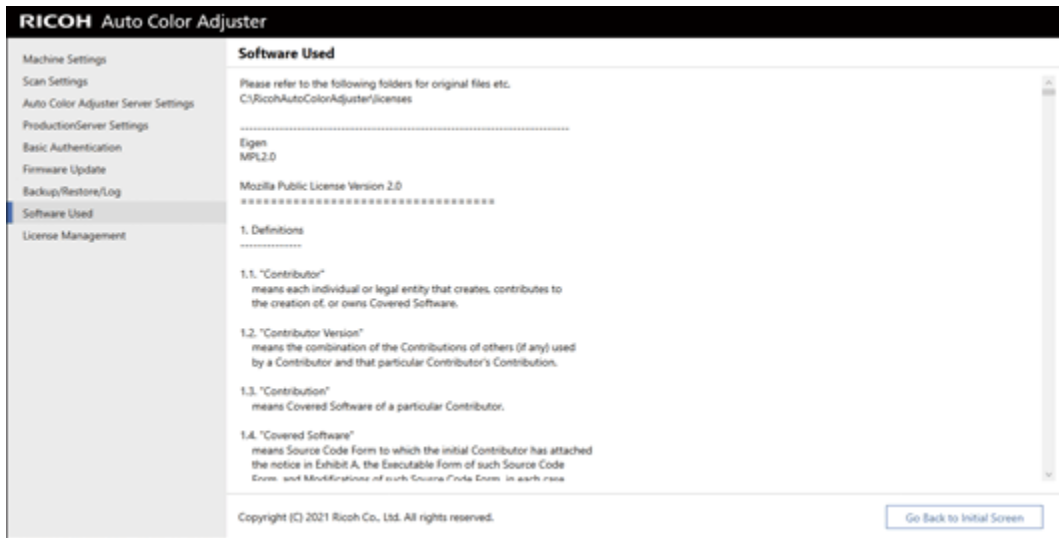
m582om0629

5

Setting Item	Description
Log Collection	You might need to check the log when contacting your service representative if a problem occurs on the machine, or in other instances. Click [Start Collection] to start collecting log entries.
Back Up Apps	Creates a backup of the settings on the computer that you are using. Select this item when you are replacing the computer that is connected to the machine. Click [Back Up] to specify the location to store the data. It is recommended to create a backup also when you are changing the settings in Machine Settings or Initial Settings.
Restore Apps	Restores the setting information on the new computer. Select this item after you replace the computer that is connected to the machine. Click [Browse...] to select the backup file, and then click [Start] .

Software Used

Use this screen to view the copyright information of the software. It is not used in the installation process.

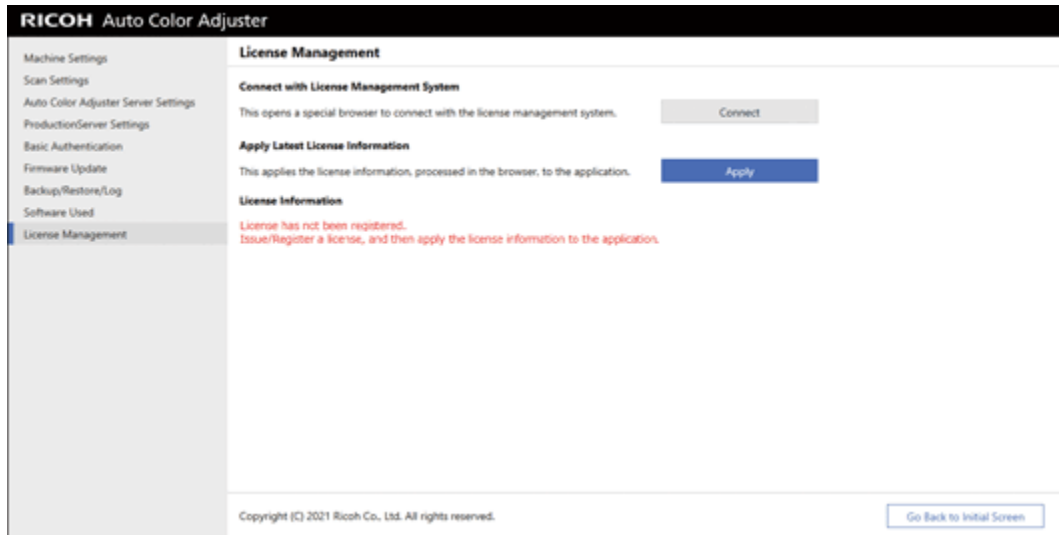


m582om0630

Setting Item	Description
[Software Used]	Displays the copyright and other information of the RICOH Auto Color Adjuster software.

5

License Management





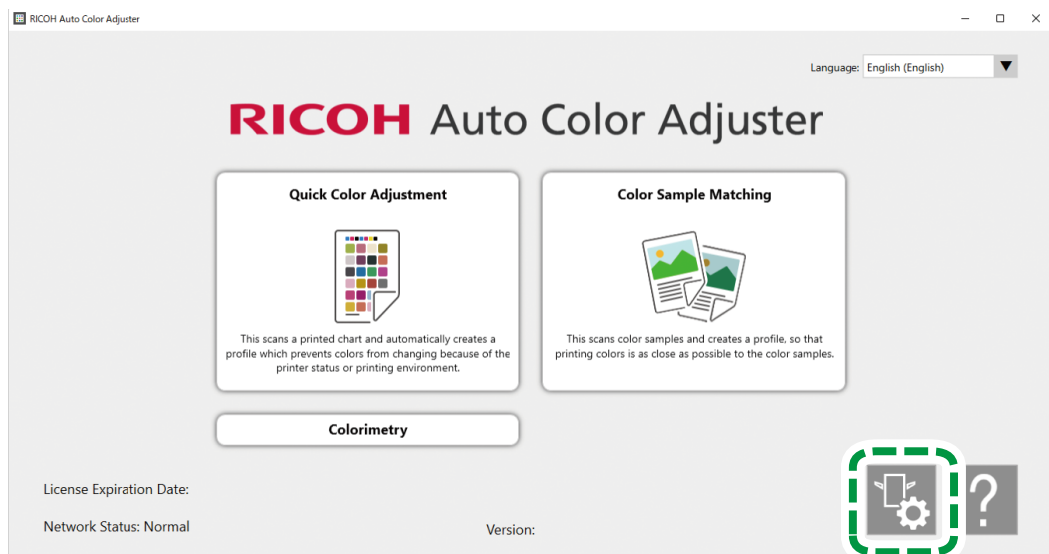
m582om0624

Setting Item	Description
[Connect with License Management System]	Click [Connect] after the installation of the RICOH Auto Color Adjuster is complete and register a passcode.
[Apply Latest License Information]	Updates to the latest license information when you click [Apply] after renewing the license.
[License Information]	Displays the license ID, available functions, and other license details. If the license is not registered, a message indicating that is displayed.

Configuring the Machine Settings

Specify the machine name, length of the scan area on the paper, and other settings, and activate RICOH Auto Color Adjuster on the License Management screen.

1. If the RICOH Auto Color Adjuster menu screen is not displayed, start the application using the **[RICOH]** icon () on the desktop.
2. Click the **[Machine Settings]** button ()



M582OM5958

3. Enter the name of the machine in **Machine Settings** → **Machine Name**.

m582om0626

The machine name is used in Initial Settings.

- If a mismatch error message is displayed for the **[Calibration Model File]**, click **[Browse...]** and specify the correct file.

Note

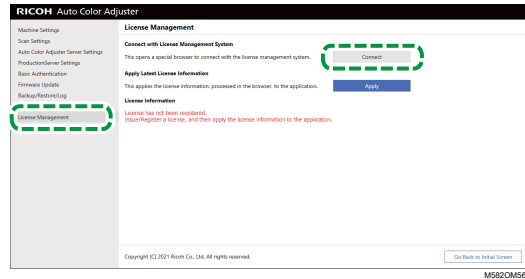
- The Calibration Model File is stored in the model folder on the USB memory that is provided with the machine. Copy the file from the USB memory device to the computer, and then select the file.
- Click **[Save]**.
 - Click **[Scan Settings]**, and specify each setting.

- [Length Unit]**: Select the unit to specify the paper length along the sub scan direction of an original/chart.
 - [Quick Color Adjustment]**, **[Color Sample Matching]**: Specify the paper length to scan for each application.
 - [M Factor (Start Color Optimization)]**: Specify the lighting condition to scan a color chart in **[Quick Color Adjustment]**. Select **[M0]** when using **[JC Digital 2011 Coated, Wedge]** as the color verification standard. Specify **[M1]** when using **[ISO12647-8 Coated V3 F51]**, **[Verify GRACoL2013, Wedge]**, **[Simple Gray Scale, Wedge 2013]**, or **[ISO12647-8 Coated V3 F51]**.
- Click **[Save]**.

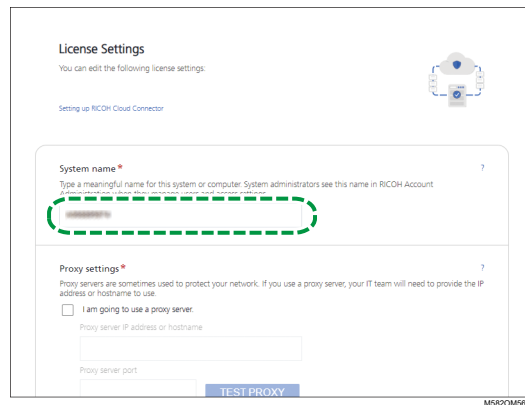
Note

- Perform the following operations in an environment accessible to the Internet.

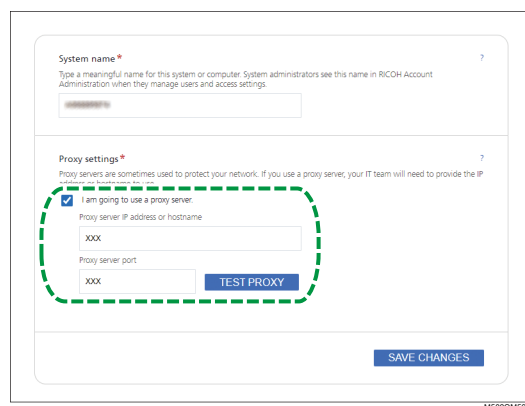
8. Click **License Management** → **Connect**.



9. Enter a name in **[System name]**.



10. If you need to specify the proxy settings to connect to the Internet, configure **[Proxy settings]**.



- Select the **[I am going to use a proxy server.]** checkbox.
- Enter the **[Proxy server IP address or hostname]**.
- Enter the **[Proxy server port]** and click **[TEST PROXY]**.

11. Click **[GENERATE CODE]**.

The sign-in screen is displayed.

12. Enter the **[Email]** and **[Password]** for the RICOH Auto Color Adjuster, and then click **[SIGN IN]**. For more information, see [Registering a Password for Connecting to the Cloud for License Management, p. 15](#).

13. When operating more than one machine together, specify a tenant, and click [**Generate one-time code**].
14. Click **Copy** → **CLOSE**.
The one-time code is copied to the clipboard.
15. Paste the one-time code that you copied into the [**One Time Code**] input box, and then click [**SUBMIT**].
16. Repeat steps from 13 through 15 when using more than one machine together.
17. When the "Success" message is displayed, click **Close** → **SAVE CHANGES**.
The configuration of the machine settings required during the installation process is now complete. Proceed to specify the following settings as necessary.



↓ **Note**

- Click [**Apply**] under [**License Management**] of [**Machine Settings**] to update the license information immediately. For more information, see [License Management, p. 39](#).

Configuring the Network Settings

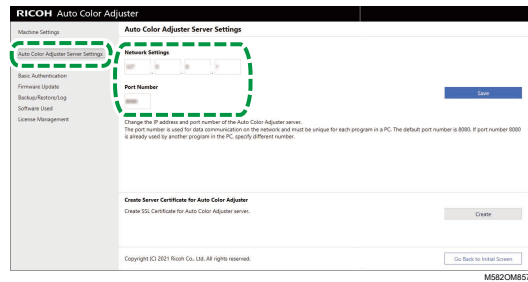
5

Change the IP address and port number of the computer being used as the server. Perform this procedure when you need to change the information you specified while installing the RICOH Auto Color Adjuster.

1. If the RICOH Auto Color Adjuster menu screen is not displayed, start the application using the [**RICOH**] icon () on the desktop.
2. Click the [**Machine Settings**] button ()



3. Click [**Auto Color Adjuster Server Settings**] and enter the [**IP Address**] and [**Port Number**].





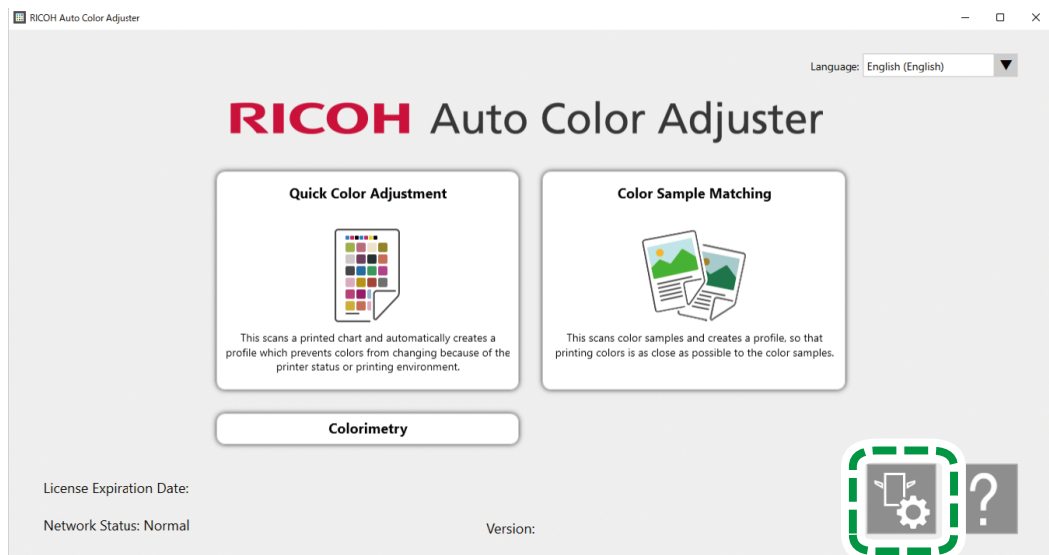
4. Click **[Save]**.

Creating the Server Certificate for Auto Color Adjuster

Add an SSL certificate to strengthen web access security. You can specify for the “Not secure” message to not be shown when accessing the server from a client computer.

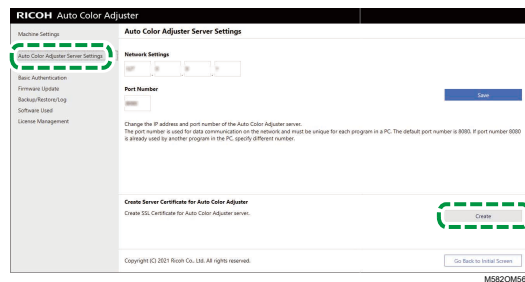
Note

- A self-signed certificate is created and used in this setting. To use an official certificate, follow the procedure provided in Apache for installing the certificate.
 1. If the RICOH Auto Color Adjuster menu screen is not displayed, start the application using the **[RICOH]** icon () on the desktop.
 2. Click the **[Machine Settings]** button ()



M582OM5958

3. Click **Auto Color Adjuster Server Settings** → **Create**, and then click **[OK]** on the confirmation screen.

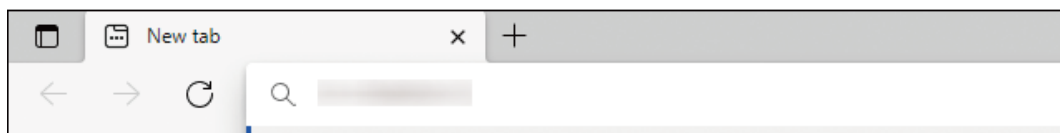


4. Enter a password using 8 to 64 single-byte alphanumeric characters, and then click **[OK]**.
5. Click **[OK]**.
A certificate has been installed to the server.

Installing a Certificate to a Client Computer

To install a certificate to a client computer:

1. Start a web browser (Chrome) on the server, and enter the IP address and port number in the address bar.



m582wm9560

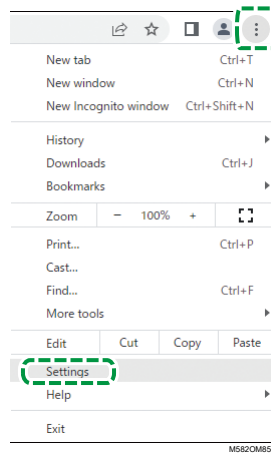
Enter the IP address and port number in the form of `https://(IP Address):(port number)`. Do not omit the colon (:) and periods (.).

Note

- If the port number is "80", you can omit ":" and the port number.

You can check the IP address and port number in **[Auto Color Adjuster Server Settings]** of **[Machine Settings]**.

2. Click **[Not secure]** in the address bar, and then click **[Certificate is not valid]**.
3. Click **Details** → **Export**.
4. Specify the save location.
5. Specify **[DER-encoded binary, single certificate (*.der)]** in **[Save as type]**, and then click **[Save]**.
6. Click the **[Close]** button, and close the web browser.
7. Copy the saved file to a client computer.
8. Start a web browser (Chrome) on the client computer.
9. In Google Chrome click the **[Options]** button.





10. Click **Privacy and Security** → **Security** → **Manage Certificates**.
11. Click **Import** → **Next**.
12. Click [**Browse...**], select the certificate file, and then click [**Next**].
13. Select [**Deploy All Certificates to the Next Store**], and then click [**Browse...**].
14. Select [**Trusted Root Certificate Authority**], and then click [**OK**].
15. Click **Next** → **Finish**.

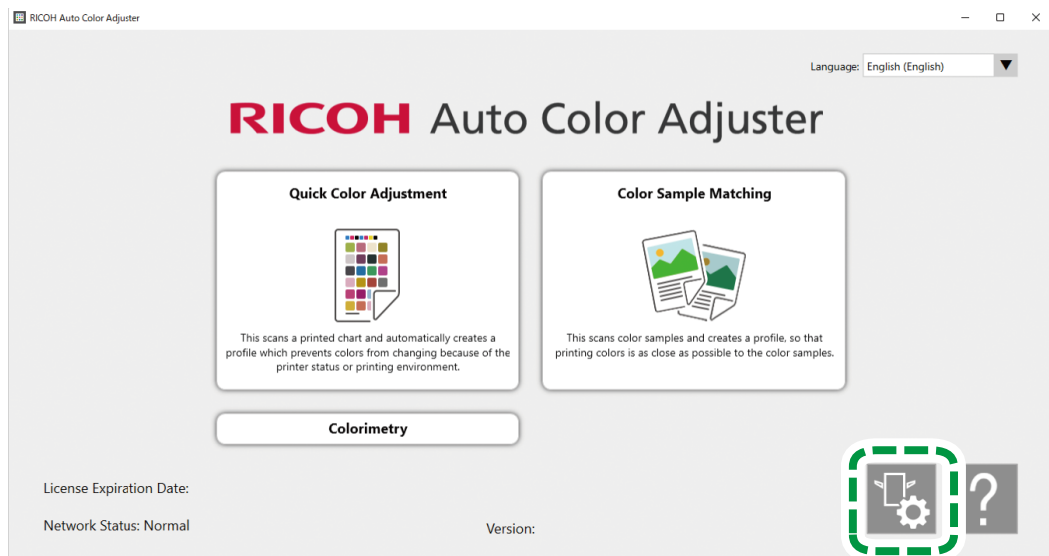
5

Specifying ProductionServer Settings

In RICOH Auto Color Adjuster, the [**User Name**] (login name) for ColorGATE Productionserver is set to [**Admin**] and the [**Password**] to [**ABC**]. Change the settings when you specify a different [**User Name**]/[**Password**] in the settings for the REST server of ColorGATE Productionserver.

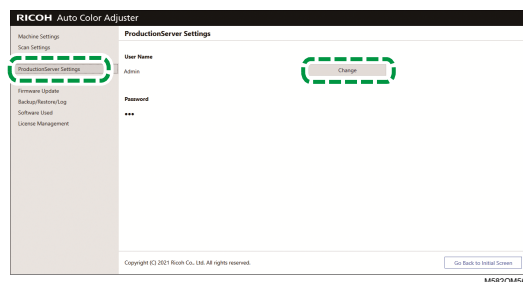
To specify the ProductionServer settings:

1. If the RICOH Auto Color Adjuster menu screen is not displayed, start the application using the [**RICOH**] icon on the desktop ().
2. Click the [**Machine Settings**] button (.



M582OM5958

3. Click **ProductionServer Settings** → **Change**.



4. Enter the login name you used when configuring the REST server of ColorGATE Productionserver to **[New User Name]**.
5. Enter the password you used when configuring the REST server of ColorGATE Productionserver to **[New Password]** and **[New Password (Confirm)]**.



Note

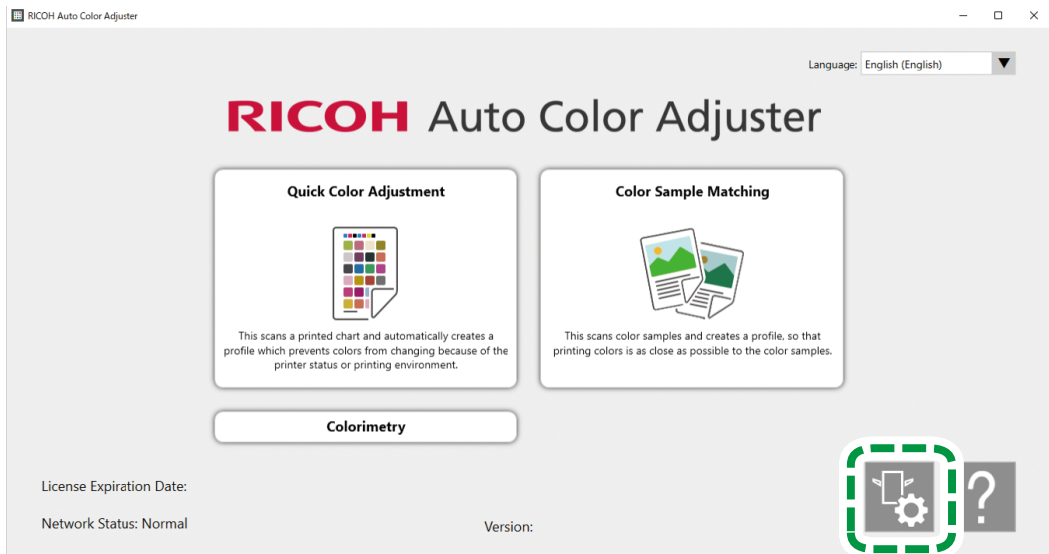
- Enter a password using 8 to 64 single-byte alphanumeric characters.

6. Click **[OK]**.

Specifying Basic Authentication

Change these settings when you change the user ID for displaying the Management Console screen from **[aca-user]** and when you change the password from **[user]**.

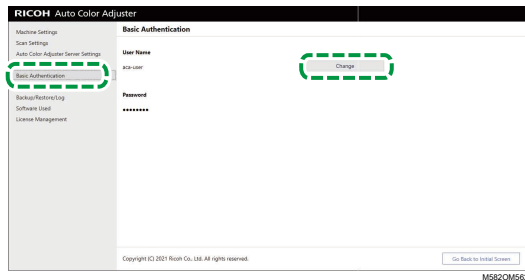
1. If the RICOH Auto Color Adjuster menu screen is not displayed, start the application using the **[RICOH]** icon () on the desktop.
2. Click the **[Machine Settings]** button ().



M582OM5958

5

3. Click **Basic Authentication** → **Change**.



4. In **[New User Name]**, enter a new user name using 1 to 64 single-byte alphanumeric characters.
5. In **[New Password]** and **[New Password (Confirm)]**, enter a new password using 8 to 64 single-byte alphanumeric characters.
6. Click **[OK]**.



6. Initial Settings

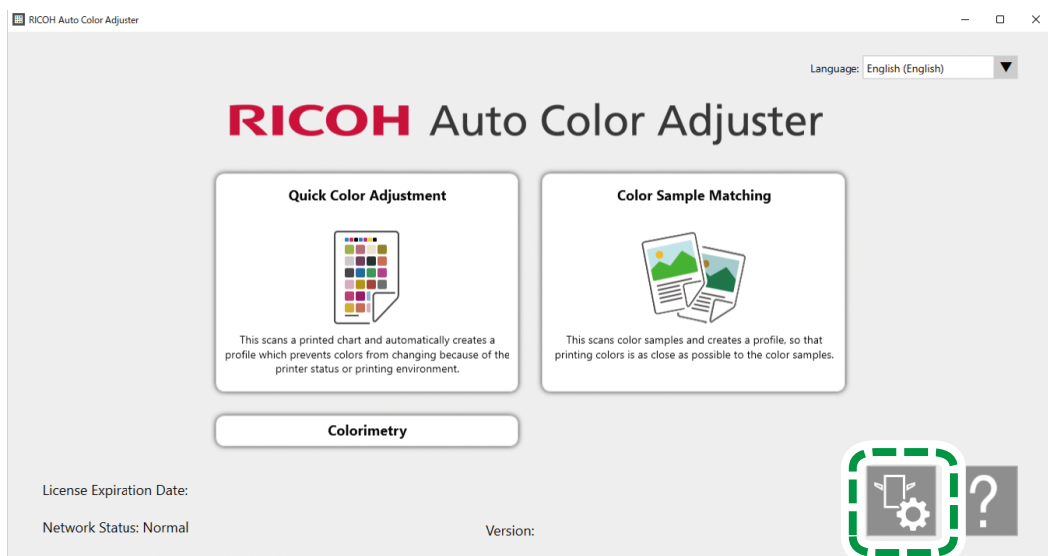
- Displaying the Initial Settings Screen
- Initial Settings Screens
- Configuring Initial Settings

Display the Initial Settings screen using a web browser, and then specify the printer, paper type, and other settings to use for **[Quick Color Adjustment]**.

Displaying the Initial Settings Screen

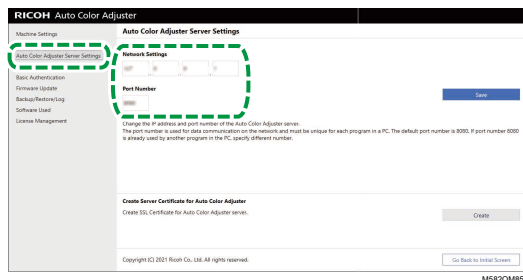
Enter the IP address and port number of the computer in the address bar of the web browser to access the Initial Settings screen.

1. Start the computer connected to the machine via USB cables.
2. Confirm the IP address and port number of the server.
 1. If the RICOH Auto Color Adjuster menu screen is not displayed, start the application using the **[RICOH]** icon () on the desktop.
 2. Click the **[Machine Settings]** button ().



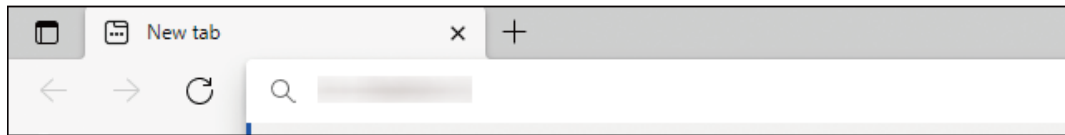
M5820M5958

3. Click **[Auto Color Adjuster Server Settings]**, and check the IP address and port number.



M5820M570

4. Click **[Go Back to Initial Screen]**, and close the RICOH Auto Color Adjuster screen.
3. Open a web browser, and then enter the IP address and port number in the address bar.



m582wm9560

↓ **Note**

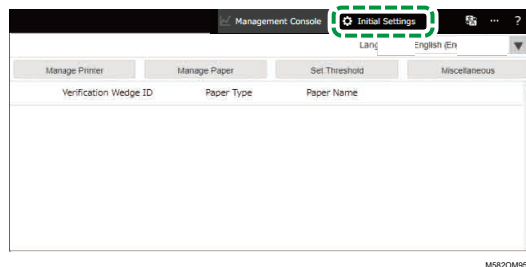
- Enter these in the format `https://(IP Address):(port number)`, including "." and ":". When the port number is "80", you can omit the entry of ":" and the port number.
4. Enter the user name and password.

↓ **Note**

- The default user name and password are as follows:
 - User name: aca-user
 - Password: user

The **Management Console** screen is displayed.

5. Click **[Initial Settings]**.



M582OM9541

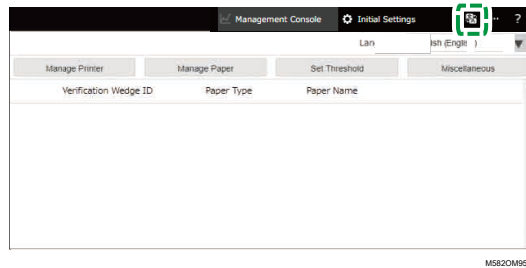
The Initial Settings screen is displayed.

↓ **Note**

- You can access the Initial Settings from the other computers running Windows 10 Pro 64 bit version (version 2004 or higher) in the network. Enter the IP address and port number confirmed in step 2 in the address bar of the web browser.
- When using a client computer in the configuration with multiple machines, ask the administrator for the IP address and port number of the server.

Changing the Default Display Language of Initial Settings

1. Display the Initial Settings screen.
2. On the Initial Settings screen, click the **[Language]** button (🌐), to specify a language.

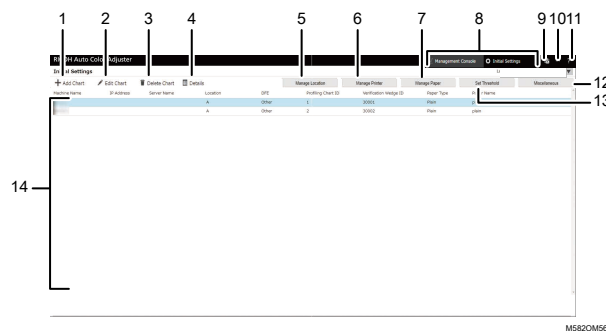


M5820M5642

The language used to display the Management Console screen also changes.

Initial Settings Screens

This section describes the details of each screen of Initial Settings and its setting items.



M5820M5645

6

1. [Add Chart]

Click to register the new chart. The Add/Edit Chart screen is displayed. For more information, see [Setting Items on the Add/Edit Chart Screen, p. 53](#).

2. [Edit Chart]

To change the registered chart, select the chart to be changed, and then click this button. The Add/Edit Chart screen is displayed. For more information, see [Setting Items on the Add/Edit Chart Screen, p. 53](#).

3. [Delete Chart]

To delete the registered chart, select the chart to be deleted, and then click this button.

4. [Details]

To confirm the detailed information about the chart, select the chart to confirm, and then click this button. You can confirm the information such as the file name of the chart to be used in **[Quick Color Adjustment]**.

5. [Manage Location]

Click to create or delete the location to register the chart. The Manage Location screen is displayed. Create locations when managing printers by site, etc. For more information, see [Details of the Manage Location Screen, p. 55](#).

6. [Manage Printer]

Click to register a new printer. Also click when modifying or deleting a registered printer. The Manage Printer screen is displayed. For more information, see [Screen Configuration of the Manage Printer Screen, p. 56](#).

7. [Manage Paper]

Click to register the paper. The Manage Paper screen is displayed. Clicking **[Add Paper]** displays the Add Paper screen. For more information, see [Screen Configuration of the Manage Paper Screen, p. 58](#).

8. [Management Console]/[Initial Settings]

Switches between the Management Console screen and the Initial Settings screen.

9. Display Language Select icon (🌐)

Changes the display language. Japanese, English, German, French, Spanish, Dutch, or Italian can be selected.

10. Software In-use icon (📄)

Check for the software that is being used.

11. User Manual Display icon (📖)

Click this to display the user manual.

12. [Miscellaneous]

Click to specify the default value of the chart to display on the Management Console screen and the destination to which to save the profile. The Miscellaneous screen is displayed. For more information, see [Setting Items on the Miscellaneous Screen, p. 65](#).

13. [Set Threshold]

Click to specify the judgement criteria of **[Quick Color Adjustment]**. The Set Threshold screen is displayed. The threshold cannot be specified for each location or printer separately. For more information, see [Setting Items on the Set Threshold Screen, p. 60](#).

14. Setting list

Settings of the registered charts are displayed in the list.

Setting Items on the Add/Edit Chart Screen

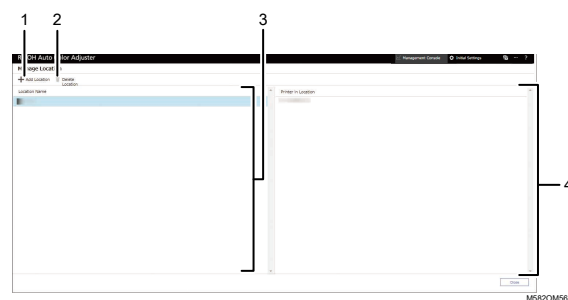
m582om0633

Setting Item	Description
[Printer Name]	Select a printer.
[ICC Profile Name ('.icc' is not required.)]	<p>Enter the file name of the ICC profile to create in [Quick Color Adjustment] using up to 32 characters.</p> <p>You cannot use \/:*?' "<> +.</p> <p>Register a different name for each combination of the chart.</p>
[Verification Wedge]	<p>Select the color verification standard. This is used as the standard for the chart to be used, CMYK source profile, and judgement criteria (threshold).</p> <ul style="list-style-type: none"> • [Japan Color Digital 2011 Coated, Wedge]: Check the color reproducibility of Japan Color 2011 Coated based on the measurement results of Japan Color control strip (54 colors) and the average of four sets of the same color. • [ISO12647-8 Coated V3 F51]: Check the color reproducibility of Fogra51 based on the measurement results of Fogra Media Wedge V3 (72 colors) and the average of four sets of the same color. • [Verify GRACoL2013, Wedge]: Check the color reproducibility of GRACoL2013 based on the measurement results of Digital Press control strip 2013 (84 colors) and the average of four sets of the same color.

Setting Item	Description
[Verification Wedge]	<ul style="list-style-type: none"> • [Simple Gray Scale, Wedge 2013]: Confirms the color reproducibility of Simple Grayscale based on the measurement results of Digital Press control strip 2013 (average of 84 colors×4 sets). • [ISO 12647-8:2021 Coated V3 F51]: Confirms the color reproducibility of ISO 12647-8:2021 [VPC] based on the measurement results of Fogra Media Wedge (average of 72 colors×4 sets). <p>★ Important</p> <ul style="list-style-type: none"> • The chart layout and the evaluation of color reproducibility is RICOH-specific. We do not guarantee the evaluation according to the certification of each certification authority.
[Paper Name]	<p>Select the type of paper to place on the printer.</p> <p>Register [Paper Name] in [Manage Paper].</p>
[Profile Settings]	<p>Display the Profile Settings screen, and then configure the settings related to color separation in profile conversion.</p>
[GCR Ratio]	<p>The mixed color of cyan, magenta, and yellow becomes gray, so it can be replaced with black (GCR). Specify the GCR ratio when creating a profile.</p> <p>The amount color ink that is replaced by black increases as you specify a greater value. The gray tone becomes more stable, and the amount of toner consumption decreases. However, the parts printed in the same color may appear grainy.</p> <p>Default: [100%]</p>
[Point to Start Using K]	<p>Specify the timing to replace cyan, magenta, and yellow with black.</p> <p>Specify 40% to make the black spots that appear in light parts less noticeable. Specify 10% or 20% for a consistent finish. Brighter colors are replaced with black when you specify a value closer to 0%. When the data is almost black and white, it is recommended to specify 0%.</p> <p>Default: [30%]</p>
[Applicable Range of K]	<p>Specify the amount of the mixed colors of cyan, magenta, and yellow to be replaced with black in the area with vivid colors. When you specify a larger value, the mixed colors of cyan, magenta, and yellow are replaced with black in the area with vivid colors. When you specify a smaller value, only the mixed colors close to gray are replaced with black.</p> <p>It is recommended to specify a value between 80% and 100%, but specify a smaller value if the gamut of vivid colors appears grainy.</p> <p>Default: [100%]</p>

Setting Item	Description
[Total Amount of Toner/Ink]	<p>Within the total 400% of CMYK, specify the maximum ratio to be used.</p> <p>This limits the amount of toner or ink specified in the ICC profile created by [Quick Color Adjustment].</p> <p>Default: [300%]</p>
[Profile Size]	<p>Select the file size of the ICC profile created by [Quick Color Adjustment]. The larger the file size, the more accurate the color conversion, but it takes longer to complete the process.</p> <p>Default: [Large]</p>

Details of the Manage Location Screen



1. [Add Location]

Click to create a new location. The Add Location screen is displayed.

You can register up to eight locations.

You can enter up to 48 characters for the location name.

You cannot use \ / : * ? ' " < > | +.

The registered name is displayed as an option in **[Location]** on the Add/Edit Printer screen.

2. [Delete Location]

To delete a registered location, select the location to delete, and then click this button. You cannot delete the locations with the printer registered.

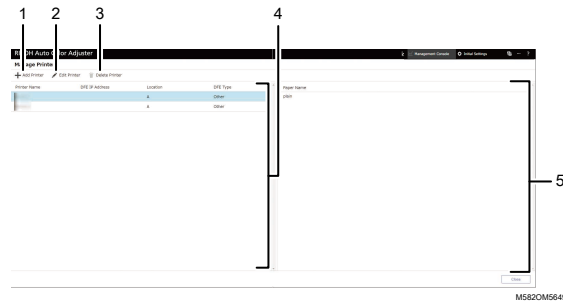
3. [Location Name]

Displays the list of registered locations.

4. [Printer in Location]

Displays the list printers registered in the selected location.

Screen Configuration of the Manage Printer Screen



1. [Add Printer]

Click to register a new printer. The Add/Edit Printer screen is displayed. For more information, see [Setting Items on the Add/Edit Printer Screen, p. 57](#).

2. [Edit Printer]

To modify the registered information for a printer, select the printer from the list, and then click this button. The Add/Edit Printer screen is displayed. For more information, see [Setting Items on the Add/Edit Printer Screen, p. 57](#).

3. [Delete Printer]

To delete a printer, select the printer from the list, and then click this button.

4. [Printer Name]

The registered printer names are displayed in this list.

5. Paper Name

The names of the paper registered on the selected printer are displayed in this list.

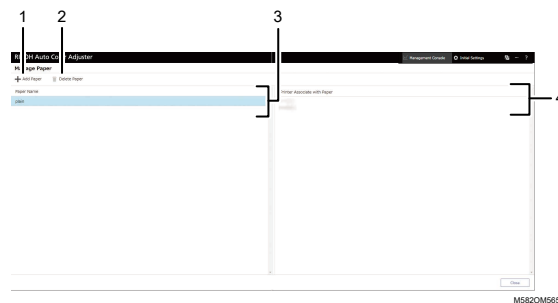
Setting Items on the Add/Edit Printer Screen

m582om0636

Setting Item	Description
[Printer Name]	Register the name of the printer using up to 48 characters. You cannot use \/:*?' "<> +.
[Location]	Select the name of the location to register the chart. Register the location in [Manage Location] .
[Machine Name]	Select the device to use for color measurement. You can register [Machine Name] in [Machine Settings] .
[DFE Type]	Select the DFE in use. If none of the options matches the DFE in use, select [Other] . When you select [Other] , the subsequent items are not displayed. When you select the TotalFlow Print Server, [DFE Server Name] is not displayed.
[DFE IP Address]	Enter the IP address of the DFE.
[Printer Manufacturer]	Specify whether the manufacturer of the printer is [RICOH] .

Setting Item	Description
[DFE Server Name]	<p>Enter the server name of the Fiery controller using 2–15 characters.</p> <p>You cannot use \/:*?"<> +,@[]'~;=.</p> <p>Enter the correct server name. The automatic registration of profiles in [Quick Color Adjustment] fails if even one character is entered incorrectly.</p>
[DFE Password]	<p>Enter the password of the DFE in use using up to 64 characters.</p> <p>You cannot use \/:*?"<> +,@[]'~;=.</p>

Screen Configuration of the Manage Paper Screen



1. [Add Paper]

Click to register new paper. The Add Paper screen is displayed. For more information, see [Setting Items on the Add Paper Screen, p. 59](#).

2. [Delete Paper]

To delete paper, select the paper from the list, and then click this button.

3. [Paper Name]

Names of the registered paper are displayed in the list.

4. [Printer Associate with Paper]

Printers that are assigned to the paper are displayed in this list.

Setting Items on the Add Paper Screen

The image shows a dialog box titled "Add Paper" with a close button (X) in the top right corner. The dialog contains three input fields:

- Paper Name:** A text input field.
- Calibration Set Name:** A text input field.
- Paper Type:** A dropdown menu currently showing "Gloss Coated".

At the bottom right of the dialog, there are two buttons: "Cancel" and "OK".

m582om0632

Setting Item	Description
[Paper Name]	<p>Enter the paper name using up to 200 characters.</p> <p>You cannot use \/:*?' "<> +.</p> <p>You can register up to 1,024 [Paper Name] items.</p> <p>The registered name is displayed as an option in [Paper Name] on the Add/Edit Chart screen.</p>
[Calibration Set Name]	<p>When the DFE you are using is Fiery, enter the calibration set name using up to 70 characters.</p> <p>You cannot use \/:*?"<> +,@[]'~;=.</p> <p>Be sure to enter the correct name for the calibration set. Otherwise, auto registration of profiles in [Quick Color Adjustment] will fail.</p> <p>Use the following calibration set preset in the DFE. If an offline spectrophotometer is available, you can create and use a calibration set as desired.</p> <ul style="list-style-type: none"> • Plain • Coated-Glossy • Coated-Matte <p>When registering a different combination of paper for a printer, you can register the combination to the same calibration set, or register them under a different calibration set name.</p>
[Paper Type]	<p>Select the paper type to be used.</p> <ul style="list-style-type: none"> • [Gloss Coated]: Select this to use coated paper or art paper. • [Matt Coated]: Select this to use matte paper. • [Plain]: Select this to use fine paper.

Setting Items on the Set Threshold Screen

RICOH Auto Color Adjuster Management Console Initial Settings

Set Threshold

Pre-judgement Engine Conformity Settings: Severe (0.0) ← → Mid (99.9)
Alert: Operates even if exceeds alert criteria

Deviation on A Page: 4.0
Deviation Between Pages: 1.0

Error: Stops if exceeds error criteria

Deviation on A Page: 1.0
Deviation Between Pages: 2.0

Pre-judgement Engine Conformity (Alert/Error) Settings: Mid (0.0) ← → Severe (5.0)
Alert: Operates even if below alert criteria

C: 1.0 M: 1.4 Y: 0.8 K: 1.00

Error: Stops if below error criteria

C: 1.25 M: 1.15 Y: 0.8 K: 1.45

Color Verification Criteria: Severe (0.0) ← → Mid (99.9)
Error: Stops if equal to or exceeds error criteria

Japan Color Digital 2011 Coated, Matte
Delta E Max: 1.0 Delta E Avg: 2.0

m582om0648

Pre-judgement Engine Conformity Settings: Severe (0.0) <—> Mild (99.9)

Specify the judgement criteria for color adjustment when using the **[Quick Color Adjustment]** function.

Setting Item	Description
Alert: Operates even if exceeds alert criteria [Deviation on A Page]	Specify the tolerance ($\Delta E00$) of the color difference within a chart scanned using the machine, in the range from 0.0 through 99.9. The smaller the specified value, the stricter the judgement, and the more accurate the color adjustment. If the measurement result exceeds the specified value, a confirmation message is displayed. Default: [4.0]
Alert: Operates even if exceeds alert criteria [Deviation Between Pages]	Specify the tolerance ($\Delta E00$) of the color difference between the two charts scanned using the machine, in the range from 0.0 through 99.9. The smaller the specified value, the stricter the judgement, and the more accurate the color adjustment. Default: [1.5]
Error: Stops if exceeds error criteria [Deviation on A Page]	Specify the tolerance ($\Delta E00$) of the color difference within a chart scanned using the machine, in the range from 0.0 through 99.9. The value must be greater than the value specified under Alert: Operates even if exceeds alert criteria, in the [Deviation on A Page] field. The smaller the specified value, the stricter the judgement, and the more accurate the color adjustment. If the measured value is greater than the specified value, you are prompted to adjust the colors on the printer. Also, you can no longer create a profile. Default: [6.0]
Error: Stops if exceeds error criteria [Deviation Between Pages]	Specify the tolerance ($\Delta E00$) of the color difference between two charts scanned using the machine, in the range from 0.0 through 99.9. The value must be greater than the value specified under Alert: Operates even if exceeds alert criteria, in the [Deviation Between Pages] field. The smaller the specified value, the stricter the judgement, and the more accurate the color adjustment. If the measured value is greater than the specified value, you are prompted to adjust the colors on the printer. Also, you can no longer create a profile. Default: [2.5]

Pre-judgement Engine Conformity (Alert/Error) Settings: Mild (0.0) <—> Severe (5.0)

Specify the standard value of maximum density for each of the CMYK colors.

Setting Item	Description
Alert: Operates even if below alert criteria [C] [M] [Y] [K]	Specify the standard value of the maximum density for CMYK, in the range from 0.0 through 5.0. The larger the value specified, the higher the density required, and the more accurate the color adjustment. If the measurement result is smaller than the specified value, a confirmation message is displayed. Default: <ul style="list-style-type: none"> • [C]: [1.50] • [M]: [1.40] • [Y]: [0.90] • [K]: [1.65]
Error: Stops if below error criteria [C] [M] [Y] [K]	Specify the standard value of the maximum density in the range from 0.0 through 5.0. The standard value should be smaller than the values specified under Error: Stops if exceeds error criteria. If the measured value is lower than the specified value, you are prompted to adjust the colors on the printer. Also, you can no longer create a profile. Default: <ul style="list-style-type: none"> • [C]: [1.25] • [M]: [1.15] • [Y]: [0.80] • [K]: [1.45]

Color Verification Criteria: Severe (0.0) <—> Mild (99.9)

Specify the judgement criteria after performing color adjustment using the **[Quick Color Adjustment]** function.

Setting Item	Description
Error: Stops if equal to or exceeds error criteria [Japan Color Digital 2011 Coated, Wedge] [Delta E Max. (ΔE_{00})] [Delta E Ave. (ΔE_{00})]	Specify the ΔE_{00} threshold values in the range from 0.0 through 99.9, for the following settings: <ul style="list-style-type: none"> • [Delta E Max. (ΔE_{00})] • [Delta E Ave. (ΔE_{00})] The specified value is displayed as a dotted line on the graph, along with the following results: <ul style="list-style-type: none"> • [Delta E Max. (ΔE_{00})] • [Delta E Ave. (ΔE_{00})] Default: <ul style="list-style-type: none"> • [Delta E Max. (ΔE_{00}): [6.5] • [Delta E Ave. (ΔE_{00}): [2.5]
Error: Stops if equal to or exceeds error criteria	Specify the ΔE_{00} threshold values in the range from 0.0 through 99.9, for the following settings: <ul style="list-style-type: none"> • [Delta E of 95th Percentile Except Boundary Patches (ΔE_{00})]

Setting Item	Description
<p>[ISO12647-8 Coated V3 F51]</p> <p>[Delta E of 95th Percentile Except Boundary Patches ($\Delta E00$)]</p> <p>[Delta E Ave. Except Boundary Patches ($\Delta E00$)]</p>	<ul style="list-style-type: none"> • [Delta E Ave. Except Boundary Patches ($\Delta E00$)] <p>The specified value is displayed as a dotted line on the graph, along with the following results:</p> <ul style="list-style-type: none"> • [Delta E of 95th Percentile Except Boundary Patches ($\Delta E00$)] • [Delta E Ave. Except Boundary Patches ($\Delta E00$)] <p>Default:</p> <ul style="list-style-type: none"> • [Delta E of 95th Percentile Except Boundary Patches ($\Delta E00$): [6.5] • [Delta E Ave. Except Boundary Patches ($\Delta E00$): [2.5]
<p>Error: Stops if equal to or exceeds error criteria</p> <p>[Verify GRACoL2013, Wedge]</p> <p>[Delta E Max. ($\Delta E00$)]</p> <p>[Delta E Ave. ($\Delta E00$)]</p>	<p>Specify the $\Delta E00$ threshold values in the range from 0.0 through 99.9, for the following settings:</p> <ul style="list-style-type: none"> • [Delta E Max. ($\Delta E00$)] • [Delta E Ave. ($\Delta E00$)] <p>The specified value is displayed as a dotted line on the graph, along with the following results:</p> <ul style="list-style-type: none"> • [Delta E Max. ($\Delta E00$)] • [Delta E Ave. ($\Delta E00$)] <p>Default:</p> <ul style="list-style-type: none"> • [Delta E Max. ($\Delta E00$): [5.0] • [Delta E Ave. ($\Delta E00$): [2.5]

Setting Item	Description
<p>Error: Stops if equal to or exceeds error criteria</p> <p>[Simple Gray Scale, Wedge 2013]</p> <p>[Maximum Weighted CMY Scale (wΔCh)]</p> <p>[Average Weighted CMY Scale (wΔCh)]</p> <p>[Maximum Weighted CMY Scale (wΔL)]</p> <p>[Average Weighted CMY Scale (wΔL)]</p> <p>[Maximum Weighted K Scale (wΔL)]</p> <p>[Average Weighted K Scale (wΔL)]</p>	<p>Specify the wΔCh and wΔL threshold values in the range from 0.0 through 99.9.</p> <p>The specified value is displayed as a dotted line on the graph, along with the following results:</p> <ul style="list-style-type: none"> • [Maximum Weighted CMY Scale (wΔCh)] • [Average Weighted CMY Scale (wΔCh)] • [Maximum Weighted CMY Scale (wΔL)] • [Average Weighted CMY Scale (wΔL)] • [Maximum Weighted K Scale (wΔL)] • [Average Weighted K Scale (wΔL)] <p>Default:</p> <ul style="list-style-type: none"> • [Maximum Weighted CMY Scale (wΔCh)]: [3.0] • [Average Weighted CMY Scale (wΔCh)]: [1.5] • [Maximum Weighted CMY Scale (wΔL)]: [3.0] • [Average Weighted CMY Scale (wΔL)]: [1.5] • [Maximum Weighted K Scale (wΔL)]: [3.0] • [Average Weighted K Scale (wΔL)]: [1.5]
<p>Error: Stops if equal to or exceeds error criteria</p> <p>[ISO12647-8:2021 Coated V3 F51]</p> <p>[Delta E Ave. Except Boundary Patches (ΔE00)]</p> <p>[Delta E of 95th Percentile Except Boundary Patches (ΔE00)]</p> <p>[Delta Ch Ave.; Composite Gray (ΔCh)]</p> <p>[Delta Ch Max.; Composite Gray (ΔCh)]</p> <p>[Delta Paper Whiteness (ΔE00)]</p>	<p>Specify the ΔE00 and ΔCh threshold values in the range from 0.0 through 99.9.</p> <p>The specified value is displayed as a dotted line on the graph, along with the following results:</p> <ul style="list-style-type: none"> • [Delta E Ave. Except Boundary Patches (ΔE00)] • [Delta E of 95th Percentile Except Boundary Patches (ΔE00)] • [Delta Ch Ave.; Composite Gray (ΔCh)] • [Delta Ch Max.; Composite Gray (ΔCh)] • [Delta Paper Whiteness (ΔE00)] <p>Default:</p> <ul style="list-style-type: none"> • [Delta E Ave. Except Boundary Patches (ΔE00)]: [2.5] • [Delta E of 95th Percentile Except Boundary Patches (ΔE00)]: [5.0] • [Delta Ch Ave.; Composite Gray (ΔCh)]: [2.5] • [Delta Ch Max.; Composite Gray (ΔCh)]: [4.0] • [Delta Paper Whiteness (ΔE00)]: [3.0]

Setting Items on the Miscellaneous Screen

m582om0638

Setting Item	Description
[Printing Condition:]	Select the default value of the chart to be displayed on the Management Console screen.
[Save Profile]	Specify the destination to which to save the profile when [Other] is specified in [DFE Type] on the Add/Edit Printer screen. You cannot use \/:*?"<> . Default: C:\RicoAutoColorAdjuster

Configuring Initial Settings

Register the paper types, color judgement criteria, and the printers to be used. Also register the PDF file for printing the chart to the DFE.

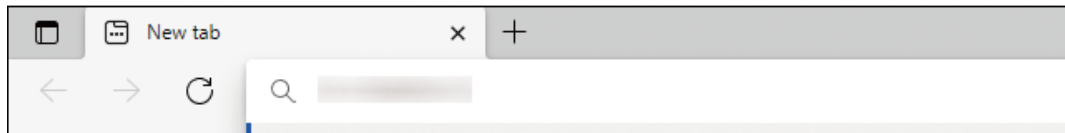
★ Important

- It is recommended to create a backup of the settings when you modify Initial Settings.
- For details about the backup procedure, see [Creating a Backup of the RICOH Auto Color Adjuster Settings, p. 76](#).

Displaying the Initial Settings Screen

Note

- Set up the machine and the computer using the Machine Settings beforehand. For more information, see [Displaying the Machine Settings Screen, p. 31](#).
 - Use the following calibration set preset in the DFE. If an offline spectrophotometer is available, you can create and use a calibration set as desired.
 - Plain
 - Coated-Glossy
 - Coated-Matte
1. Open a web browser, and then enter the IP address and port number in the address bar.



m582wm9560

Note

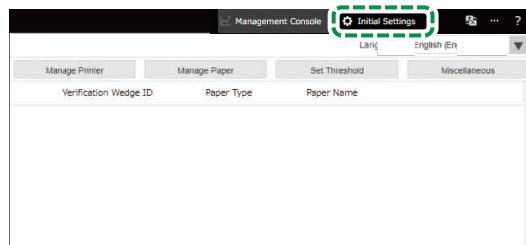
- Enter these in the format `https://(IP Address):(port number)`, including "." and ":". When the port number is "80", you can omit the entry of ":" and the port number.
2. Enter the user name and password.

Note

- The default user name and password are as follows:
 - User name: aca-user
 - Password: user

The **Management Console** screen is displayed.

3. Click **[Initial Settings]**.



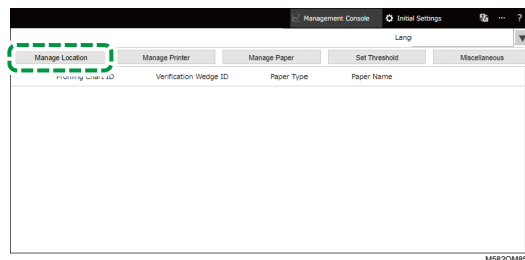
M5820M541

The Initial Settings screen is displayed.

Configuring Basic Settings in Initial Settings

Configure **[Manage Location]**, **[Manage Printer]**, and **[Manage Paper]**. Also, modify the judgement criteria of **[Quick Color Adjustment]** in Set Threshold as required.

1. On the Initial Settings screen, click **[Manage Location]**.



2. Click **[Add Location]**.
3. Enter the name of the location to register the printer, and then click **[OK]**.

Note

- You can enter up to 48 characters for the location name.
- You cannot use \ / : * ? ' " < > | +.
- If the Manage Location screen is not displayed after clicking **[OK]**, check if the correct characters are entered and the number of characters does not exceed the limit.
- Repeat steps 2 and 3 to register two or more locations. Add locations when managing printers by site, etc.

4. Click **[OK]**.
5. Click **Manage Printer** → **Add Printer**.
6. Specify **[Printer Name]**, **[DFE Type]**, and other settings.

Note

- Repeat steps 5 and 6 to add another printer.
- For more information, see [Setting Items on the Add/Edit Printer Screen, p. 57](#).

7. Click **[OK]**.
8. Click **[Add Paper]**.
9. Specify **[Paper Name]**, **[Calibration Set Name]**, and **[Paper Type]**, and then click **[OK]**.

Note

- Repeat steps 8 and 9 to register two or more paper types.
- For more information, see [Setting Items on the Add Paper Screen, p. 59](#).

10. Click **[OK]**.
11. Click **[Set Threshold]**.
12. Specify the judgement criteria of **[Quick Color Adjustment]**, and then click **[OK]**.

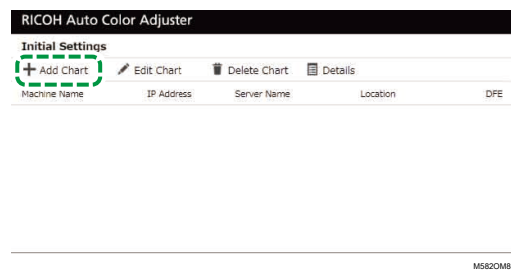
Note

- For more information, see [Setting Items on the Set Threshold Screen, p. 60](#).
- When you select **[Other]** in **[DFE Type]** in step 6, click **[Miscellaneous]** in the Initial Settings screen, and confirm the setting in **[Save Profile]**.

The basic configuration of Initial Settings is complete. Next, register the chart.

Registering the Chart in Initial Settings

1. On the Initial Settings screen, click **[Add Chart]**.



MS820M8537

2. Specify the chart-related information such as **[Printer Name]**, and **[Paper Name]**.

Note

- For more information, see [Setting Items on the Add/Edit Chart Screen, p. 53](#).
- If using two or more paper types for a printer, add another printer and register with a different **[Paper Name]**.
- Next, register the PDF file for the chart to the DFE.

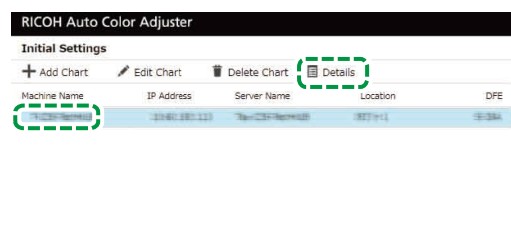
Registering the PDF File for the Chart to the DFE

Register the PDF file for printing the chart used by the **[Quick Color Adjustment]** to the DFE as a job.

CAUTION

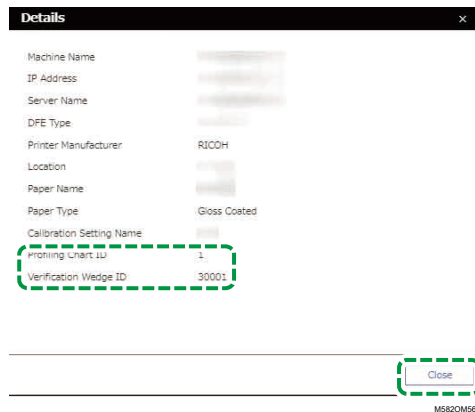
- **Keep USB flash memory devices out of reach of children. If a child accidentally swallows an USB flash memory device, consult a doctor immediately.**

1. On the Initial Settings screen, select the chart, and then click **[Details]**.



MS820M8559

- If two or more paper types are registered for a printer, confirm the combination of **[Machine Name]** and **[Paper Name]** and select the correct one.
- Confirm the chart number, and then click **[Close]**.



- Profiling Chart ID: Used for color adjustment.
- Verification Wedge ID: Used for color verification.

The chart number is given to each chart.

- Open the C:\RicohAutoColorAdjuster\ReferenceChart\profile_A3 folder.

Note

- When 101 or more color charts are registered, decompress chartPDF_Profile.zip in the qca folder in the provided USB flash memory.
- Register the PDF file of the Profiling Chart ID that you checked in step 3 as a job.
 - Open the folder C:\RICOHAutoColorAdjuster\ReferenceChart, and then open the folder of the color verification standard to be used.
 - analysis_Fogra_A3: Open this folder when **[ISO12647-8 Coated V3 F51]** is selected for **[Verification Wedge]** in the Add/Edit Chart screen.
 - analysis_GRACoL_A3: Open this folder when **[Verify GRACoL2013, Wedge]** is selected for **[Verification Wedge]** in the Add/Edit Chart screen.
 - analysis_JC_A3: Open this folder when **[Japan Color Digital 2011 Coated, Wedge]** is selected for **[Verification Wedge]** in the Add/Edit Chart screen.
 - analysis_Fogra_2021_A3: When **[ISO12647-8:2021 Coated V3 F51]** is specified in **[Verification Wedge]** on the Add/Edit Chart screen.
 - analysis_SimpleGrayScale_A3: When **[Simple Gray Scale, Wedge 2013]** is specified in **[Verification Wedge]** on the Add/Edit Chart screen.

When 101 or more color charts are registered, decompress one of the following files in the qca folder in the provided USB flash memory.

- chartPDF_Fogra.zip: When **[ISO12647-8 Coated V3 F51]** is selected for **[Verification Wedge]** in the Add/Edit Chart screen.
- chartPDF_GRACoL.zip: When **[Verify GRACoL2013, Wedge]** is selected for **[Verification Wedge]** in the Add/Edit Chart screen.

- chartPDF_JC.zip: When **[Japan Color Digital 2011 Coated, Wedge]** is selected for **[Verification Wedge]** in the Add/Edit Chart screen.
7. Register the PDF file of the Verification Wedge ID that you checked in step 3 as a job.

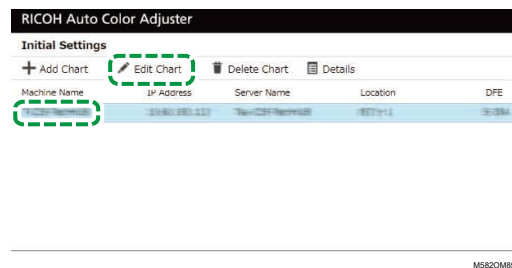
Note

- For the registration procedure, see the DFE manual.

Editing the Chart Registered in Initial Settings

To edit the chart registered in Initial Settings:

1. On the Initial Settings screen, select the chart, and then click **[Edit Chart]**.

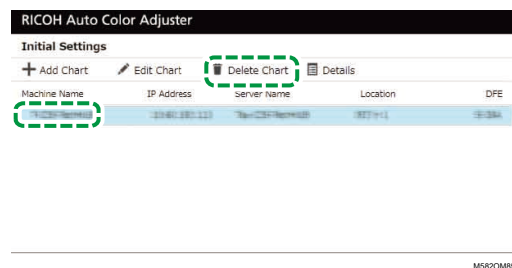


2. If two or more paper types are registered for a printer, confirm the combination of **[Machine Name]** and **[Paper Name]** and select the correct one.
3. Change the chart information.
4. Click **[OK]**.
5. When you have changed the **[Verification Wedge]**, register the PDF file for the chart to the DFE. For more information, see [Registering the PDF File for the Chart to the DFE, p. 68](#).

Deleting the Chart Registered in Initial Settings

To delete the chart registered in Initial Settings:

1. On the Initial Settings screen, select the chart, and then click **[Delete Chart]**.



2. If two or more paper types are registered for a printer, confirm the combination of **[Machine Name]** and **[Paper Name]** and select the correct one.
3. Click **[OK]**.


7. Troubleshooting when Configuring Settings

- Troubleshooting (Machine Settings)
- Troubleshooting (Initial Settings)

This section describes the actions to be taken when you cannot operate Machine Settings or Initial Settings, or when messages are displayed.

Troubleshooting (Machine Settings)

When You Cannot Start Machine Settings

This section describes the actions to be taken when the Machine Settings screen is not displayed and no message appears after clicking the **[Machine Settings]** button () in the menu.

Cause	Resolution
The Machine Settings application is corrupted or has been deleted.	<ul style="list-style-type: none">• Close the menu screen, and then start the RICOH Auto Color Adjuster again.• Restart Windows.
An error occurred in the communication between the machine and the computer.	<ul style="list-style-type: none">• If the machine is turned off, turn it on. If the machine is turned on, restart it.• Make sure that the machine and the computer are connected using two USB cables.

If the problem persists, contact your service representative.


When a Message Is Displayed in Machine Settings

Message	Cause	Resolution and reference
"Error" "Failed to acquire data." "Failed to acquire data from server, please restart the apps. Call service if this error message is displayed repeatedly."	Failed to communicate with the server.	<ul style="list-style-type: none">• Check that the computer is connected to the network.• Specify the IP address and port number of the server correctly, and restart RICOH Auto Color Adjuster. For more information, see Configuring the Network Settings, p. 43.• When replacing the computer that is used as the server, follow the instructions to install and configure the application. For more information, see Operation Workflow for Computer Replacement, p. 79.
"Warning" "Acquisition of display language has failed, so the application will start	<ul style="list-style-type: none">• When you started RICOH Auto Color Adjuster for the first time, a language other than English, Japanese, German,	To use Japanese, German, French, Spanish, Dutch, or Italian, select the [Language:] in the RICOH Auto Color Adjuster screen.

Message	Cause	Resolution and reference
with English as the user interface language."	<p>French, Spanish, Dutch, or Italian was specified in Windows, or the language setting information could not be obtained.</p> <ul style="list-style-type: none"> The language setting information when RICOH Auto Color Adjuster was last used cannot be obtained. 	
"Failed to start the application, please try again. Call service if this error message is displayed repeatedly."	The computer cannot connect to the server.	<ul style="list-style-type: none"> Make sure that the computer and the server are both connected to the network. Restart Windows on the computer and the server. <p>If the error remains displayed, contact your service representative.</p>
<p>"Failed to start the application."</p> <p>"Failed to communicate with the server. Check for network problems."</p>	An error occurred in the database or the computer cannot connect to the server.	

Troubleshooting (Initial Settings)

When the Initial Settings Screen Is Not Displayed

Status	Cause	Resolution
When entering the IP address and port number in the web browser, the 404 error is displayed and the Initial Settings screen is not displayed, or nothing is displayed on the screen, and you cannot perform any operation.	The entered IP address and port number are not correct.	<p>Enter the correct IP address and port number. Enter ":" after the IP address, and then enter the port number.</p> <p>You can check the IP address and port number in [Auto Color Adjuster Server Settings] under Machine Settings that is displayed when you click the [Machine Settings] button () on the menu screen. When using a client computer, ask the administrator for the correct IP address and port number.</p>
	Old cache remains in the web browser.	In the Management Console screen, press the F5 key while pressing the Shift key. The web browser cache is cleared and the screen is reloaded.

Status	Cause	Resolution
	<p>In a configuration with multiple machines, the server cannot be accessed from the client computer.</p>	<ul style="list-style-type: none"> • Make sure that the computer and the server are both connected to the network. • Restart Windows on the computer and the server. <p>If the error remains displayed, contact your service representative.</p>

When a Message Is Displayed in Initial Settings

Message	Cause	Resolution and reference
<p>"The entry is incorrect."</p>	<p>One or more of the following settings was not specified or is incorrect:</p> <ul style="list-style-type: none"> • [Location Name] • [Printer Name] • [ICC Profile Name] • [Paper Name] 	<ul style="list-style-type: none"> • Specify the following settings: <ul style="list-style-type: none"> – [Location Name] in the Add Location screen: Enter up to 48 characters. – [Printer Name] in the Add/Edit Chart screen: Enter up to 48 characters. – [ICC Profile Name] in the Add/Edit Chart screen: Enter up to 32 characters. – [Paper Name] in the Add Paper screen: Enter up to 200 characters. • Do not use any of the following characters: \/:*?' "<> +.

8. Updating the RICOH Auto Color Adjuster

- Updating the RICOH Auto Color Adjuster Version
- Creating a Backup and Restoring RICOH Auto Color Adjuster

This chapter explains how to update the RICOH Auto Color Adjuster version. You can also create a backup of the RICOH Auto Color Adjuster settings and then restore the settings from the backup.

Updating the RICOH Auto Color Adjuster Version

Update the RICOH Auto Color Adjuster installed on a computer when a newer version of the RICOH Auto Color Adjuster becomes available.

★ Important

- The backup file of the settings is required when performing update. Create a backup before you perform update.
 1. Create a backup of Settings. For more information, see [Creating a Backup of the RICOH Auto Color Adjuster Settings, p. 76](#).
 2. Download the installer from the manufacturer's web site, and save it on the computer to be connected to the machine.
 3. Log in to the computer using a user account with administrator privileges, and then close all applications.
 4. Execute the downloaded AutoColorAdjusterSetup_Verxxx.msi.

↓ Note

- XXX will vary depending on the date the file is released.

The installation wizard is displayed.

5. Click **[Next]**.



m582om0603

6. Click **[Next]**.
7. Click **[Install]**.
The installation starts.

8. When a screen asking whether to restart the computer is displayed, click **[Yes]**.
9. If a confirmation screen for the file in use is displayed, specify **[Close the applications and attempt to restart them.]**, and then click **[OK]**.
10. When the installation is complete, click **[Completed]**.
11. Click **[Yes]** on the screen asking whether to restart.
12. Restore Settings. For more information, see [Restoring the RICOH Auto Color Adjuster Settings](#), p. 77.



Creating a Backup and Restoring RICOH Auto Color Adjuster

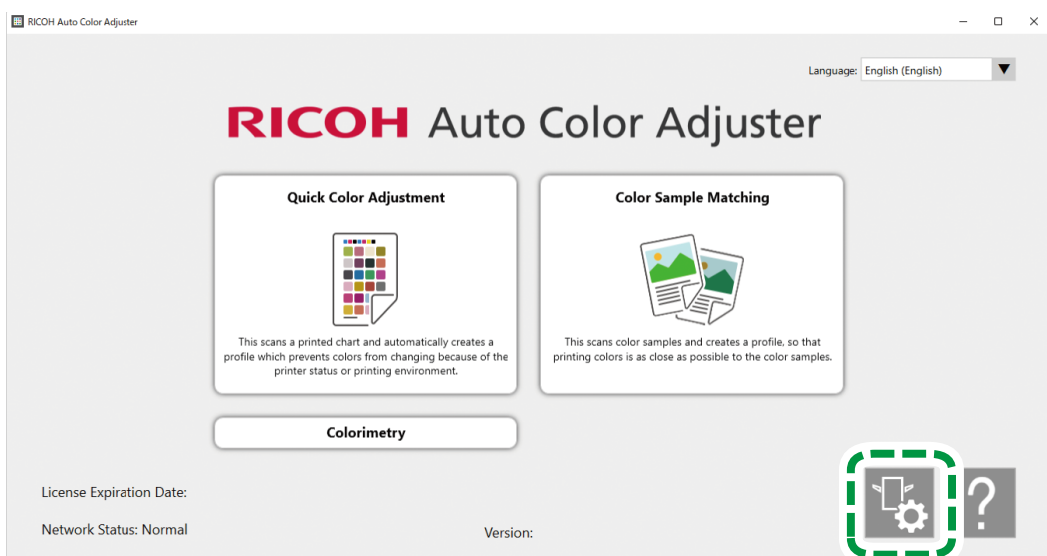
Create a backup or restore the settings of RICOH Auto Color Adjuster when:

- The Initial Settings section is modified.
- The RICOH Auto Color Adjuster is updated.
- The computer that is used as the server is being replaced.

Creating a Backup of the RICOH Auto Color Adjuster Settings

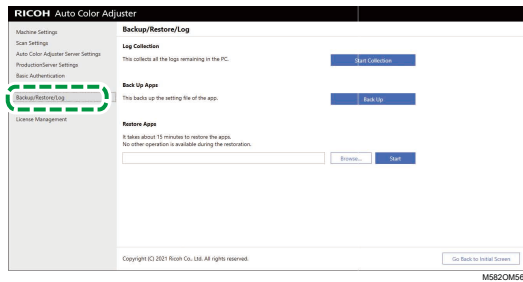
Create a backup of the RICOH Auto Color Adjuster settings on the computer with the software running as the server.

1. If the RICOH Auto Color Adjuster menu screen is not displayed, start the application using the **[RICOH]** icon () on the desktop.
2. Click the **[Machine Settings]** button ()



M582OM5958



3. Click **[Backup/Restore/Log]**.

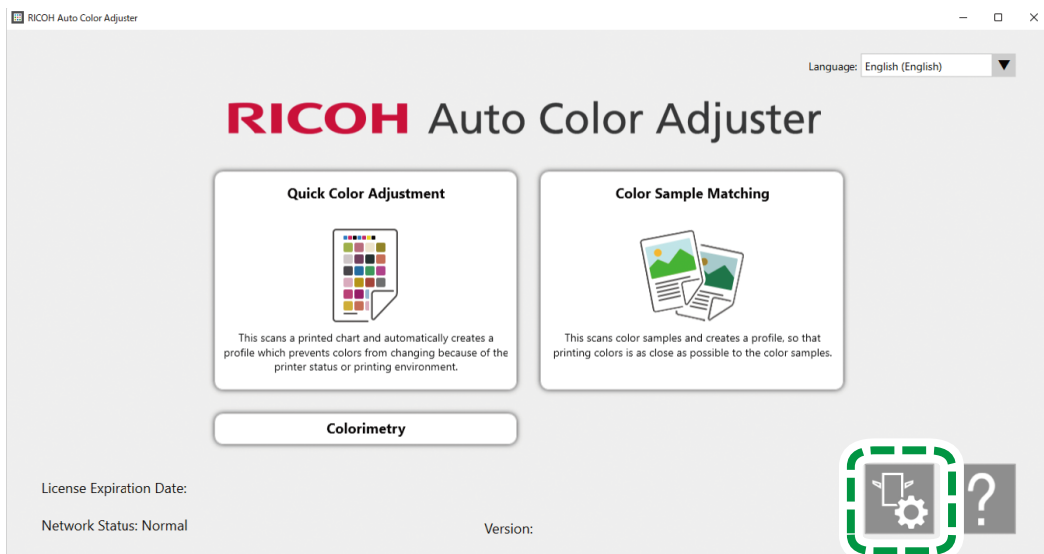


4. Click **[Back Up]**, specify the destination to which to save the backup file.
5. Click **OK** → **Go Back to Initial Screen**.

Restoring the RICOH Auto Color Adjuster Settings

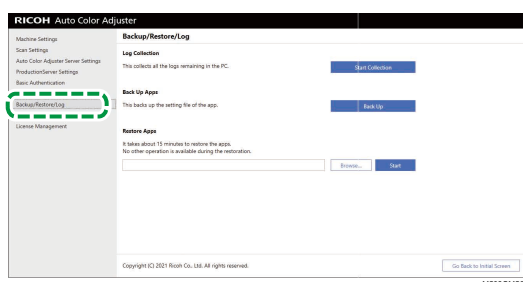
Restore the settings of RICOH Auto Color Adjuster.

1. If the RICOH Auto Color Adjuster menu screen is not displayed, start the application using the **[RICOH]** icon () on the desktop.
2. Click the **[Machine Settings]** button ().



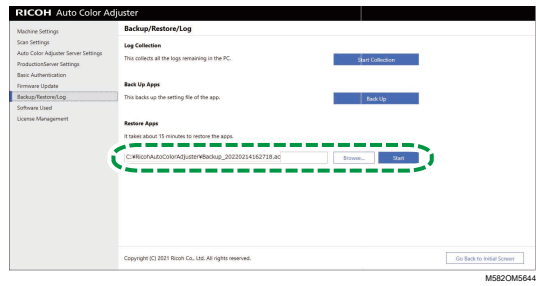
M582OM5958

3. Click **[Backup/Restore/Log]**.



M582OM5643

4. Specify the destination to which to save the backup file, and then click **[Start]**.



5. When the restore is complete, click **[Exit]**.

9. Replacing the Computer Connected to the Machine

- Operation Workflow for Computer Replacement
- Creating a Data Backup
- Restoring the Data

Operation Workflow for Computer Replacement

This section explains the workflow of required operations for replacing the computer that is connected to the machine.



1. Creating a backup of the data (on the old computer currently being used). For more information, see [Creating a Data Backup, p. 79](#).
2. Installing the application (on the new computer you intend to use). For more information, see [Downloading and Installing the RICOH Auto Color Adjuster, p. 15](#), [Obtaining the Fieri Command WorkStation, p. 19](#), and [Installing Ghostscript, p. 25](#).
3. Connecting the machine to the computer (new computer). For more information, see [Connecting the Machine to the Computer, p. 29](#).
4. Restoring the data (new computer). For more information, see [Restoring the Data, p. 82](#).
5. Activating the product(s) (on the New Computer). For more information, see [Activating the RICOH Auto Color Adjuster, p. 84](#) and the ColorGATE user documentation.
6. Uninstalling the application (old computer). For more information, see [Uninstalling the Applications, p. 87](#).

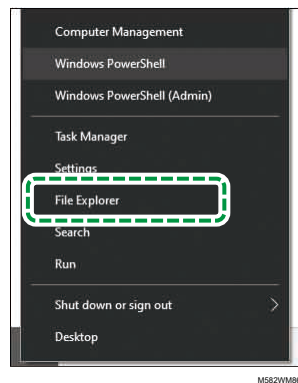
Creating a Data Backup

Create a backup of the RICOH Auto Color Adjuster setting information that is stored on the server and the ColorGATE Productionserver license file.

Using the network connection or other means, save the backup file on the new computer to which you are migrating.

Creating a Backup of the Setting Information of RICOH Auto Color Adjuster and Calibration Model File

1. If the RICOH Auto Color Adjuster menu screen is not displayed, start the application using the **[RICOH]** icon () on the desktop.
2. Click the **[Machine Settings]** button (.

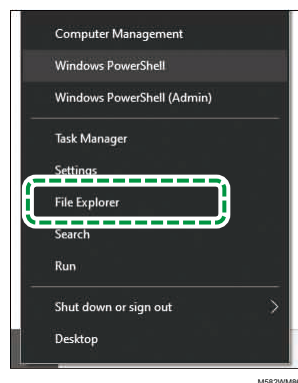


8. Go to `C:\RicohAutoColorAdjuster\Apps\EngController\cmodel` and save the file for the Calibration Model File that you selected.

Creating a Backup of the ColorGATE Productionserver License File

Create a backup of the ColorGATE Productionserver license file before replacing the computer that is connected to the machine.

1. To cancel the license, contact the ColorGATE customer service.
2. Select **Start** → **Productionserver23** → **Productionserver23 - Revoke License**.
3. Select **[Release]**, and then select **[Close]** after the license has been released.
4. Right-click **[Start]** and select **[File Explorer]**.



5. Open the `C:\ProgramData\ColorGATE Software\Productionserver23\ACDB` folder, and check that a file with the extension ACDB is stored in the folder.
6. Return to the `C:\ProgramData\ColorGATE Software\Productionserver23\ACDB` folder, and save the ACDB folder.
7. Install the application on the new computer, and connect the device.



↓ **Note**

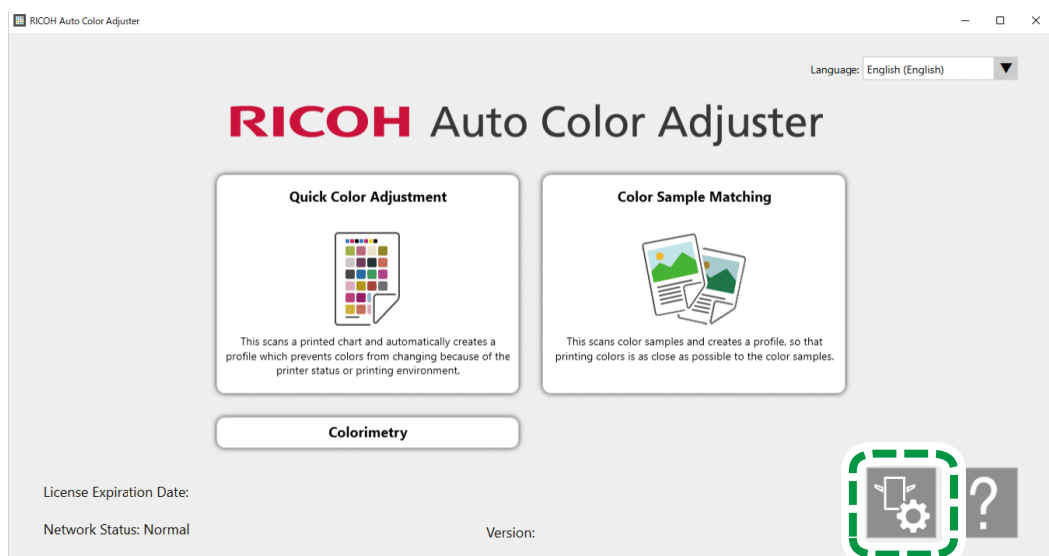
- For information about installing the RICOH Auto Color Adjuster, see [Downloading and Installing the RICOH Auto Color Adjuster, p. 15](#).
- For information about installing the ColorGATE Productionserver, see the ColorGATE user documentation.
- For information about configuring the ColorGATE Productionserver, see [Configuring the REST Server of the ColorGATE Productionserver, p. 23](#).
- For information about installing the Fiery Command WorkStation, see [Obtaining the Fiery Command WorkStation, p. 19](#).
- For information about installing GPL Ghostscript, see [Installing Ghostscript, p. 25](#).
- For information about connecting the machine to the computer, see [Connecting the Machine to the Computer, p. 29](#).

Restoring the Data

This section explains how to restore the RICOH Auto Color Adjuster setting information and the ColorGATE Productionserver license file.

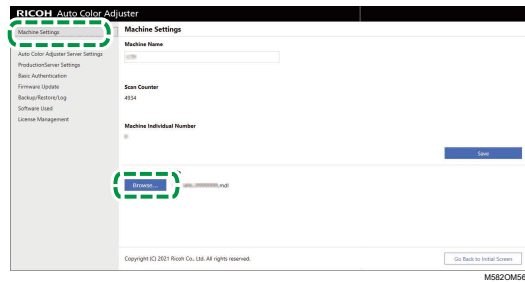
Restoring the Setting Information of RICOH Auto Color Adjuster and Calibration Model File

1. If the RICOH Auto Color Adjuster menu screen is not displayed, start the application using the **[RICOH]** icon () on the desktop.
2. Click the **[Machine Settings]** button ()

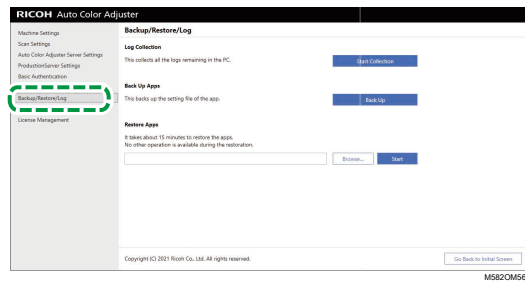


M582OM5958

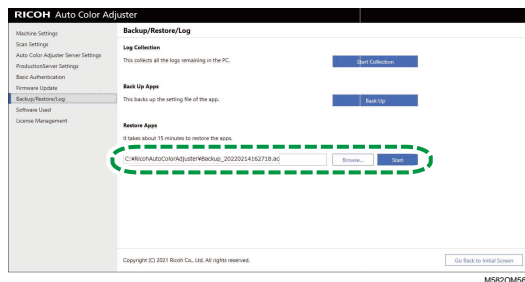
3. Click **Machine Settings** → **Browse...**



4. Specify the file you saved.
5. Click **[Backup/Restore/Log]**.



6. Specify the destination to which to save the backup file, and then click **[Start]**.



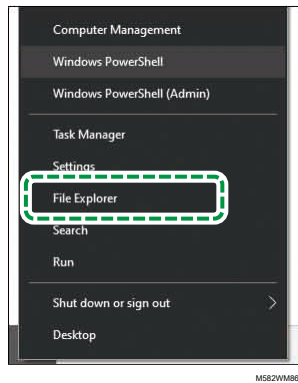
7. When the restore is complete, click **[Exit]**.

Restoring the ColorGATE Productionserver License File

Install the ColorGATE Productionserver in advance.

Note



- For information about installing the ColorGATE Productionserver, refer to the ColorGATE user documentation.
1. Right-click **[Start]** and select **[Explorer]**.

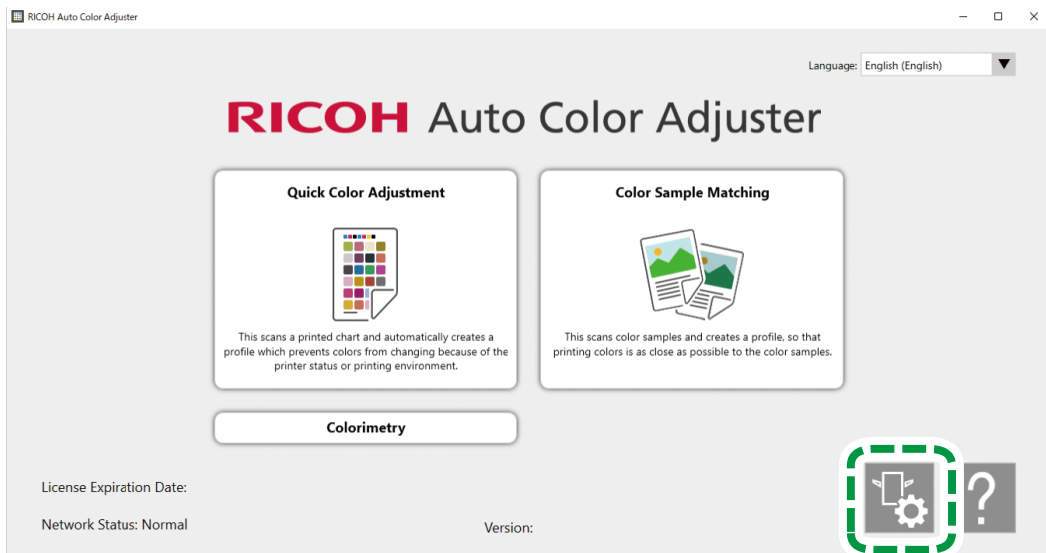


M582VM8640

2. Save the ACDB folder that you obtained from the server in the C:\ProgramData \ColorGATE Software\Productionserver23 folder.
3. Activate and configure the ColorGATE Productionserver on the new computer. For more information, see the ColorGATE user documentation and [Configuring the REST Server of the ColorGATE Productionserver, p. 23](#).

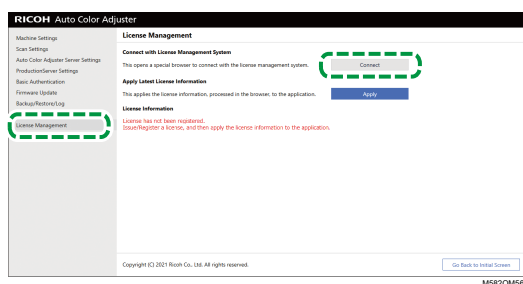
Activating the RICOH Auto Color Adjuster

1. If the RICOH Auto Color Adjuster menu screen is not displayed, start the application using the **[RICOH]** icon () on the desktop.
2. Click the **[Machine Settings]** button ().

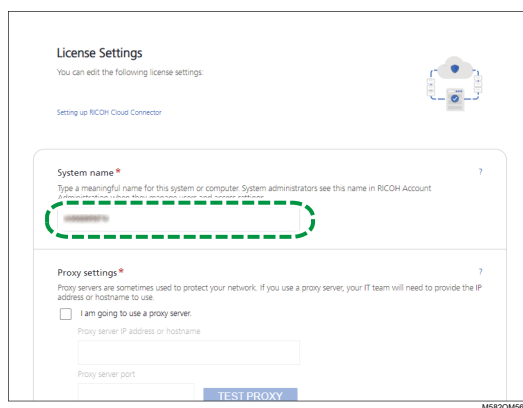


M582OM5958

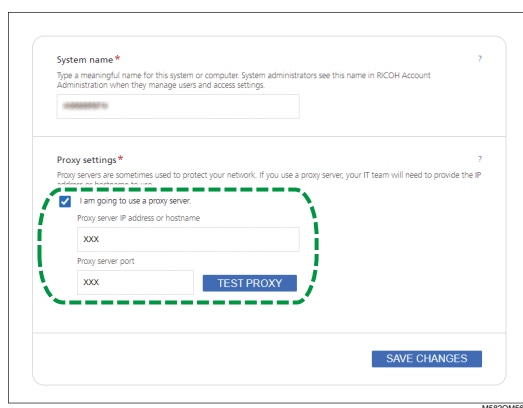
3. Click **License Management** → **Connect**.



4. Enter a name in **[System name]**.



5. If you need to specify the proxy settings to connect to the Internet, configure **[Proxy settings]**.



1. Select the **[I am going to use a proxy server.]** checkbox.
2. Enter the **[Proxy server IP address or hostname]**.
3. Enter the **[Proxy server port]** and click **[TEST PROXY]**.
6. Click **[GENERATE CODE]**.
The sign-in screen is displayed.
7. Enter the **[Email]** and **[Password]**, and then click **[SIGN IN]**.

Note

- Enter the e-mail address and password for RICOH Auto Color Adjuster. For more information, see [Registering a Password for Connecting to the Cloud for License Management, p. 15](#).
8. When operating more than one machine together, specify a tenant, and click **[Generate one-time code]**.

9. Click **Copy** → **CLOSE**.
The one-time code is copied to the clipboard.
10. Paste the one-time code that you copied into the **[One Time Code]** input box, and then click **[SUBMIT]**.
11. When the Success message is displayed, click **Close** → **SAVE CHANGES**.

10. Uninstalling the Applications

- Uninstalling the RICOH Auto Color Adjuster
- Removing the Path to GPL Ghostscript from the System Environment Variables

This section explains how to uninstall the RICOH Auto Color Adjuster application and how to update the environment variables after uninstalling the GPL Ghostscript.

Uninstalling the RICOH Auto Color Adjuster

Note

- If you want to retain the settings of the RICOH Auto Color Adjuster when reinstalling the application, for example, create a backup of the settings before uninstalling the application. For details about the backup procedure, see [Creating a Backup of the RICOH Auto Color Adjuster Settings](#), p. 76.

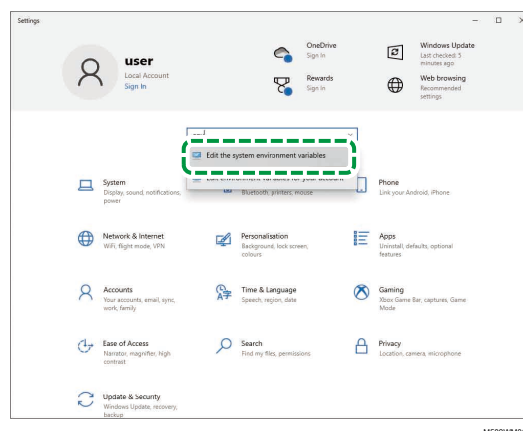
To uninstall the RICOH Auto Color Adjuster:

1. Log in to the computer using a user account with administrator privileges.
2. Close all the applications.
3. Select **Start** → **Settings** → **Apps**.
4. Select **[RICOH AutoColorAdjuster]**, and then select **[Uninstall]**.
5. Select **[Uninstall]**.
Uninstallation starts. When a screen asking whether to restart the computer is displayed, select **[Yes]**.
6. Select **[Yes]** on the screen asking whether to restart.

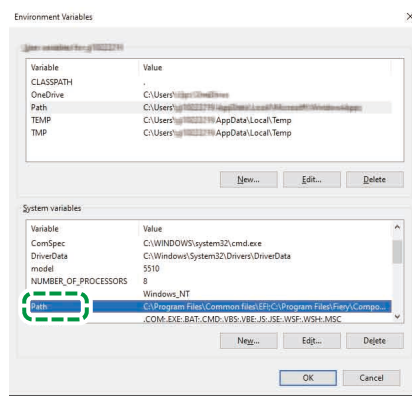
Removing the Path to GPL Ghostscript from the System Environment Variables

After you uninstall the GPL Ghostscript, remove the Ghostscript path from the environment variables.

1. Click **Start** → **Settings**.
2. Enter **env** in the input box, and then click **[Edit the system environment variables]** from the options that appear.



3. Click **[Environment Variables]**.
4. Double-click **[Path]** under System variables.



5. Select `C:\Program Files\gs\gs9.27\bin`, and then click **[Delete]**.
6. Select `C:\Program Files\gs\gs9.27\lib`, and then click **[Delete]**.
7. Click **[OK]** twice, and close the Settings screen.

