

---

## Ricoh ProcessDirector Express V1.2

---

### Overview

---

Ricoh ProcessDirector Express is easy to use, modular workflow software that lets you start small and grow over time. Ricoh ProcessDirector Express can be a single point of control to help medium size print providers optimize and manage print and mail processes. With core capabilities plus optional add-on features, ProcessDirector Express software enables flexible control of your production processes using Adobe® PDF datastreams.

This release of Ricoh ProcessDirector Express includes new capabilities to allow an operator to see where a job is in its workflow as well as other usability improvements, enhancements to the Reports feature that allow flexible customization of the contents of reports and new features that allow support for Xerox and Kodak Cut Sheet PDF printers, including the ability to send values for media and stapling to the printer.

### Highlights

- Support for Xerox and Kodak PDF printers now allows you to send your Cut Sheet jobs with media and stapling requirements to a variety of printer models.
- Extensive usability enhancements including visual tracking of a job within its workflow, and a function that simplifies locating a job in the ProcessDirector Express system. A new capability allows you to customize your system by providing your own names for the phases used for workflow processing.
- The enhanced Reports feature allows you to select additional job properties to be tracked in reporting data and allows you to combine those properties with the standard properties in your own custom reports. The Reports feature also incorporates printer data to provide data used for InfoPrint 5000 color vs. black/white multi-click accounting, a function formerly provided by InfoPrint Productivity Tracker. With the Reports feature, you no longer need Productivity Tracker to collect snapshot data from your InfoPrint 5000 printers.
- Additional control over key security settings such as password rules, account lockout after inactivity, and ability to prevent multiple simultaneous sessions for the same user

## **Announce and General Availability Dates**

---

**Planned Announce Date: September 26, 2013**

**Planned Availability Dates: September 27, 2013**

## **New Item Numbers**

---

<b>Item</b>	<b>Description</b>
5765-H29	Ricoh ProcessDirector Express
5765-H29-0022	Cut Sheet Support for Kodak
5765-H29-0023	Cut Sheet Support for Xerox
- 5765-H29-S0007	Supply Feature - Cut Sheet Support for Kodak
- 5765-H29-S0008	Supply Feature - Cut Sheet Support for Xerox
- 5639-R19-0033	Cut Sheet Support for Kodak 1 Year Registration
- 5639-R19-0034	Cut Sheet Support for Xerox 1 Year Registration
- 5639-R19-0035	Cut Sheet Support for Kodak 1 Year Renewal
- 5639-R19-0036	Cut Sheet Support for Xerox 1 Year Renewal
5639-R22-0055	Cut Sheet Support for Kodak 3 Year Registration
5639-R22-0056	Cut Sheet Support for Xerox 3 Year Registration
- 5639-R21-0072	Cut Sheet Support for Kodak 3 Year Renewal
- 5639-R21-0073	Cut Sheet Support for Xerox 3 Year Renewal
5765-H29-C0016	Cold Backup - Cut Sheet Support for Kodak
5765-H29-C0017	Cold Backup - Cut Sheet Support for Xerox

## **Description**

---

Ricoh announces Ricoh ProcessDirector Express V1.2 for Windows and Linux. With this program, we offer the proven capabilities of Ricoh ProcessDirector Express in a simple, easy to use package that can lower operational costs and improve quality for full document level control of Adobe PDF files.

With modular features, including vendor-neutral inserter management, Ricoh ProcessDirector Express is the premier modular, browser-based, workflow software for job and document management and control of Adobe PDF jobs.

The base functions of Ricoh ProcessDirector Express include:

- Managing print queues
- Tracking the production process from receipt of the print file to final delivery
- Using a file viewer to find the pages of PDF jobs that need to be reprinted
- Interacting with other programs, such as:
  - Third-party applications
  - User-written applications

## **Cut Sheet Support for Xerox and Kodak Printers**

In this release, we're adding support for two new PDF printer types – Xerox and Kodak. When the Cut Sheet Support for Xerox or Kodak features is installed, you can define and drive Xerox or Kodak printers from Ricoh ProcessDirector Express, including the ability to send selections for page- and job-level media and job-level stapling to the printer.

Supported Kodak PDF printers include these models:

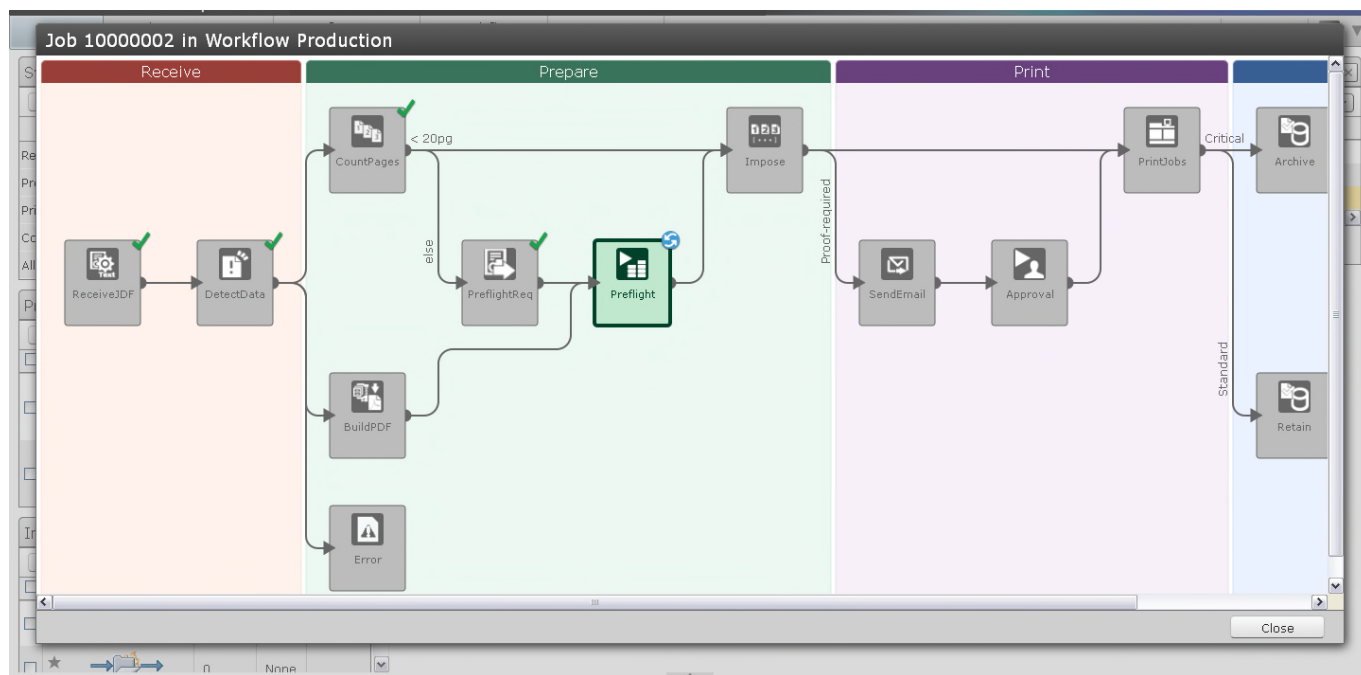
- Digimaster EX 110
- Digimaster EX 125
- Digimaster EX138
- Digimaster EX150
- Digimaster EX300

Supported Xerox PDF printers include these models with the DocuSP® Controller:

- DocuTech 6100,6115,6135,6155, 6180, 75, 90, 350, 425, 500, 700, 850, 1000, 128HLV, 155HLC, 180HLC,
- DocuPrint 100EPS, 115EPS, 135 EPS, 155EPS, 180EPS
- DocColor 250,2045,2060,6060,7000,8000
- iGen3
- Nuvera 100DCP, 120DCP, 100DPS, 120DPS
- XDP 4110,4590

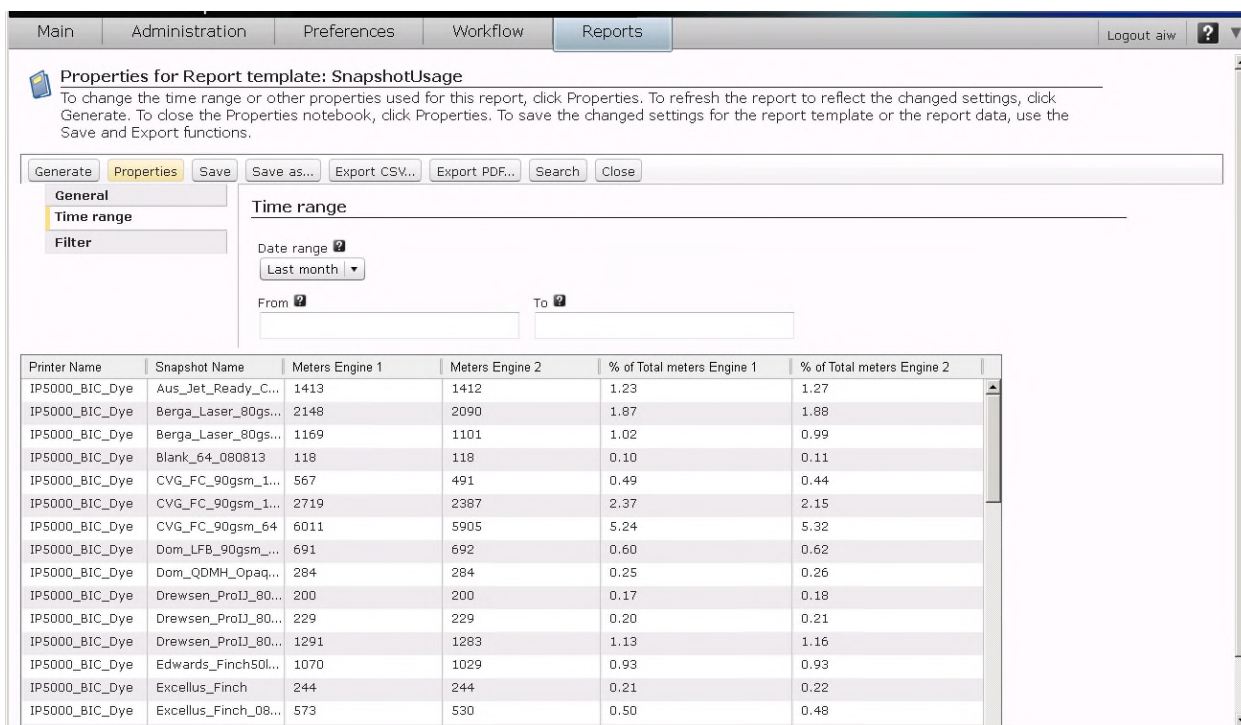
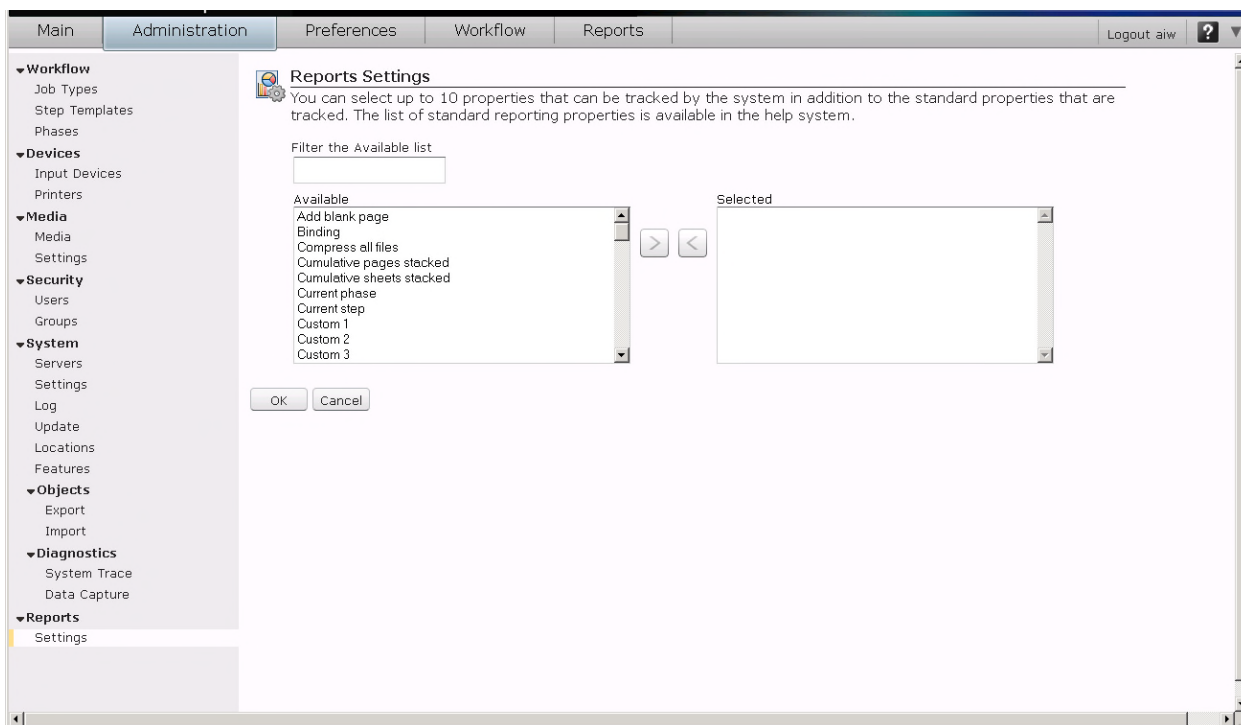
## **Workflow Enhancements – View job in workflow**

The visual workflow builder, introduced in the previous release of ProcessDirector Express, was only accessible to the administrators creating new workflows. In this version, we are extending that function to allow operators to use that visual workflow layout to see where a job is in its workflow, what branches in the conditions were taken, and where it's heading next.



## Enhanced Reports Feature

**Extends your reporting power** – add up to 10 new job properties that can be tracked and then combined with standard job properties to create your own custom reports.



The Reports feature also has two new report templates: SnapshotLoaded and SnapshotUsage. Snapshots are defined on the InfoPrint 5000 printers. The SnapshotLoaded report shows the value of the meter count when a snapshot is loaded on a printer. The SnapshotUsage report shows how many meters of paper ran through a given printer after each snapshot was loaded. For example, the SnapshotUsage report can tell you how many pages printed using monochrome settings versus full color settings on an InfoPrint® 5000 printer.

The new snapshot reports can be used instead of InfoPrint Productivity Tracker to collect the usage data needed for multi-click billing on the InfoPrint® 5000 printer.

## **USABILITY ENHANCEMENTS**

Both the Operator interface and the administrator's Workflow Builder GUI were enhanced to improve user productivity. In addition to the ability to view a graphical status of a job in its workflow, operators can more easily locate jobs in the system using a powerful search function that can filter the Jobs list by searching for a string appearing in any job property value displayed in the list. Additionally, operators can reorder the printers and input devices lists on the Main page using drag and drop to place the more frequently used item at the top of the list.

In the Workflow builder, administrators will now be able to more easily specify and change the order in which Ricoh ProcessDirector Express evaluates the connectors when it tries to choose which connector a job should use. And even when a workflow is enabled and in use, you can now view the properties for a step or connector to aid in workflow design and debug.

An enhancement that improves the usability of the system for both operators and administrators is the ability to rename the phases that ProcessDirector Express uses to describe the stages of a workflow. The base ProcessDirector Express product supplies phases named Receive, Prepare, Print and Complete. You can now change those phase names to better match the functions that you perform in your workflows, such as Setup, Prepress, Print and Mail. These phase names appear in the System Summary on the Main page and the Workflow builder when workflows are being created so that you can use terms more familiar to your staff when working with the product.

### **Updated operating system support**

You can now install the primary server on these additional operating systems or levels:

- Red Hat Enterprise Linux 5.9
- Red Hat Enterprise Linux 6.3 or 6.4
- Windows 8 Enterprise Edition

### **Updated browser support**

You can now run the user interface with these browsers:

- On Windows:
  - ◆ Microsoft Internet Explorer 10
  - ◆ Most recent version of Mozilla Firefox
  - ◆ Most recent version of Google Chrome
  
- On Linux:
  - ◆ Most recent version of Mozilla Firefox
  - ◆ Most recent version of Google Chrome

### **Accessibility by people with disabilities**

---

Ricoh ProcessDirector Express has the following capabilities for vision-impaired users:

- Allows operation using only the keyboard (except for layout customization, visual workflow builder and job workflow viewer)
- Communicates all information without using color as the only distinguisher.
- Supports interfaces commonly used by screen magnifiers
- Supports interfaces commonly used by screen readers
- Provides documentation in an accessible format

Ricoh ProcessDirector Express has the following capability for users with mobility impairments or limited hand use:

- Can be operated using only the keyboard with exceptions noted above.

U.S. Section 508 Voluntary Product Accessibility Template (VPAT) can be requested from the Web site at

<http://www.infoprint.com/accessibility>

### **SECTION 508 OF THE U.S. REHABILITATION ACT**

Ricoh ProcessDirector Express is capable, when used in accordance with Ricoh Production Print Solutions' associated documentation, of satisfying the applicable requirements of Section 508 of the Rehabilitation Act, provided that any assistive technology used with the product properly interoperates with it. A U.S. Section 508 Voluntary Product Accessibility Template (VPAT) can be requested using the Ricoh Production Print Solutions' Web site at

<http://www.infoprint.com/accessibility>



## **Publications**

---

All publications are downloadable from the Ricoh Information Center

<http://www4.infoprintsolutions.com/help/index.jsp>

The ProcessDirector Express for Windows Publications CD, GK4T-20022 contains the following publications:

- ProcessDirector Express for Windows: Planning and Installing, G550-20221
- ProcessDirector Express: Integrating with Other Applications, S550-20222
- ProcessDirector Express: License Information, G550-20219

In addition, the CD contains ProcessDirector Express for Windows Information Center.

The ProcessDirector Express for Linux Publications CD, GK4T-20021 contains the following publications:

- ProcessDirector Express for Linux: Planning and Installing, G550-20220
- ProcessDirector Express: Integrating with Other Applications, G550-20222
- ProcessDirector Express: License Information, G550-20219

In addition, the CD contains ProcessDirector Express for Linux Information Center.

The PDF Mailroom Integrity feature also includes this publication on its CD:

- ProcessDirector Express: Installing, configuring, and Using the PDF Mailroom Integrity Feature, G550-20226

## **Language support**

---

Previous versions of Ricoh ProcessDirector Express and features are available and supported in the following languages

- English, French, Italian, German, Spanish, Japanese, Brazilian Portuguese

No new function in version 1.2 has been translated.

## **Customer Responsibilities**

---

The customer is responsible for installing, configuring, maintaining and using the Ricoh ProcessDirector Express™ according to documented procedures, and for using the product in accordance with the Ricoh

Production Print Solutions International Product License Agreement (IPLA), which can be found at this Web link: <http://www.infoprint.com/licenses>

Additional customer responsibilities can be found in the Software Support Handbook under your responsibilities at this Web Link:

[http://www.infoprint.com/internet/comnelit.nsf/Files/Software\\_Support\\_Handbook/\\$File/Software\\_Support\\_Handbook.pdf](http://www.infoprint.com/internet/comnelit.nsf/Files/Software_Support_Handbook/$File/Software_Support_Handbook.pdf)

## **Software Requirements**

---

Ricoh ProcessDirector Express primary server can be installed on a server running one of the following:

- Windows Server 2008 R2 or later, 64-bit
- Windows 8 Enterprise Edition, 64-bit
- SUSE Linux Enterprise Server (SLES) 10 SP3 or SP4 or SUSE Linux Enterprise Server 11 for x86 with SP1 or SP2 , 64-bit
- Red Hat Enterprise Linux® 5.6, 5.7, 5.8,5.9, 6.1, 6.2, 6.3, or 6.4 , 64-bit

Ricoh ProcessDirector Express uses a Web browser to access and display the user interface. You can access the interface from the system where the primary server is installed, or from any system running a supported web browser. The supported browser versions for accessing ProcessDirector Express on a client system are as follows:

- Microsoft Internet Explorer 9 and 10
- Mozilla Firefox Version Latest Service Level
- Google Chrome, Latest Service Level

Ricoh ProcessDirector Express has a Web-based viewer that displays PDF files to assist you in selecting pages for reprinting. This viewer requires Adobe Reader 9.0 or X on the client system.

The PDF Plug-in of the PDF Mailroom Integrity feature can be installed on a client workstation. The workstation must be running one of these operating systems:

- Windows XP Professional with SP3 or above – 32 and 64 bit
- Windows 7 Professional with SP1 or above – 32 and 64 bit

In addition, the following are required for the PDF Plug-in utility:

- Adobe Acrobat X Pro version 10.1.1 or above
- Sun Java Version 7 Update 6 or above
- 1GB RAM dedicated to the application

### **PitStop Connect**

Pitstop Connect requires Enfocus PitStop Server 10 or higher on an application server that is configured to work with the primary server.

### **Impostrip Connect**

Impostrip Connect requires Ultimate Impostrip OnDemand Digital Automation 7 or higher on an application server that is configured to work with the primary server.

## **Hardware Requirements**

---

A minimum configuration for Ricoh ProcessDirector Express V1.2 is a server with:

- One or more 2.8 GHz, or faster, processors.
- DVD-ROM device.
- Minimum of 4 GB or more RAM (12 GB RAM required for PDF Mailroom Integrity).
- A display with a resolution of 1280x800 is preferred.
- Connectivity to a LAN.

Optional features installed on the same computer as the base product might have their own hardware requirements.

The following table contains the hardware requirements for the Ricoh ProcessDirector Express Transforms.

Ricoh ProcessDirector Express for Linux	
Advanced Transform Feature	2 additional GB RAM
Ricoh ProcessDirector Express for Windows	
Advanced Transform Feature	2 additional GB RAM

## **Supported PDF Printers**

---

**Additional models of Ricoh PDF printers are supported in this version of ProcessDirector Express. Supported models include:**

Aficio SP 9100DN  
imagio MP C6000/C7500

imagio MP C6000/C7500 (F4000)  
imagio MP C6001/C7501 (F4010)  
imagio MP C6001/C7501  
imagio MP 9000/1100/1350  
imagio MP 9000/1100/1350 (F5000)  
IPSiO SP 9100Pro  
Pro 550EX/C700EX (E-8100)  
Pro 906EX/1106EX/1356EX  
Pro 907  
Pro 907EX/1107EX/1357EX  
Pro 907EX/1107EX/1357EX (F5010)  
Pro 1107  
Pro 1107M  
Pro 1357  
Pro 1357M  
Pro 8100EX  
Pro 8110EX  
Pro 8120EX  
Pro 8100S  
Pro 8110S  
Pro 8120S  
Pro C5100S  
Pro C5100SHT  
Pro C5110S  
Pro C5110SHT  
Pro 6100  
Pro 6100HT  
Pro 6100HE  
Pro C651EX/C751EX (E-41A)  
Pro C720 (Fiery)  
Pro C720S (Fiery)  
Pro C751 (E-41A)  
Pro C900 (Fiery)  
Pro C900S (Fiery)  
Pro C900 (E-80)  
Pro C900S (E-80)  
Pro C901 (E-41)  
Pro C901S (E-41)  
Pro C901 (E-42)  
Pro C901S (E-42)  
Pro C901 (E-81)  
Pro C901S (E-81)  
Pro C901 (E-82)  
Pro C901S (E-82)

**Supported Kodak PDF printers include these models:**

- Digimaster EX110
- Digimaster EX125
- Digimaster EX138
- Digimaster EX150
- Digimaster EX300

**Supported Xerox PDF printers include these models with the DocuSP® Controller**

- DocuTech 6100,6115,6135,6155, 6180, 75, 90, 350, 425, 500, 700, 850, 1000, 128HLV, 155HLC, 180HLC,
- DocuPrint 100EPS, 115EPS, 135 EPS, 155EPS, 180EPS
- DocColor 250,2045,2060,6060,7000,8000
- iGen3
- Nuvera 100DCP, 120DCP, 100DPS, 120DPS
- XDP 4110,4590

## **Ricoh ProcessDirector Express Ordering Information**

---

Ricoh ProcessDirector Express is composed of a base license, printer attachment features, and optional features.

### **Ordering optional features for Ricoh ProcessDirector Express**

To order one or more optional features:

- Open the Configurator model for Ricoh ProcessDirector Express (#5765-H29)
- Choose either the Windows (5765-H29-0001W) or Linux (5765-H29-0002L) option
- Choose optional features – one optional feature is required for each base license (5765-H29) that will install the optional feature. The optional features are listed in the “Item Numbers” section of this document.
- Specify the correct number and type of printer attachment features. A printer attachment feature must be ordered for each attached printer. The print speeds for the printer attachment are:
  - 0-62 impressions-per-minute (workgroup)
  - 63-91 impressions-per-minute (low-speed)
  - 92-116 impressions-per-minute (medium-speed)
  - 117 -1499 impressions-per-minute (high-speed)
  - 1500+ impressions-per-minute (ultra-high-speed)

A printer attachment feature is required for each group of 25 workgroup printers.

A printer attachment feature is required for each low-speed printer.

No attachment feature is required for the first five medium-speed printers. For example, if 10 medium-speed printers are attached, order the medium speed feature with a quantity of 5.

No attachment feature is required for the first two high-speed printers. For example, if 5 high-speed printers are attached, order the high-speed feature with a quantity of three.

A printer attachment feature is required for each ultra-high-speed printer.

- Specify the desired maintenance item (1 or 3 years)

## **Terms and Conditions**

---

Ricoh ProcessDirector Express is offered by Ricoh Production Print Solutions LLC in the United States and by one or more of its affiliates in selected countries outside of the United States, collectively (“Ricoh”).

The information provided in this announcement letter is for reference and convenience purposes only. The terms and conditions that govern any transaction with Ricoh are contained in the applicable contract documents, such as, but not limited to, the International Program License Agreement (IPLA) and the International Agreement for Acquisition of Software Maintenance.

## **Licensing:**

---

The IPLA governs your use of the program. Your invoice serves as your Proof of Entitlement. These programs have a One-time-charge (OTC) for use of the program, and an annual (or multi-year if available) renewable charge for ongoing support, which includes telephone assistance, as well as access to updates and new releases of the program as long as you have a current software maintenance agreement in effect.

## **Maintenance Service Offerings**

---

Ricoh includes one year of software maintenance with the initial license acquisition of each program acquired under the terms of International Agreement for Acquisition of Software Maintenance, which does not require customer signatures.

While covered under the terms of the software maintenance agreement, Ricoh provides you assistance for your routine, short-duration installation, and usage (how to) questions, as well as code defect support and access to PTF updates, releases, and versions of the program.

Ricoh provides assistance via telephone and, if available, electronic access, only to your Information Systems (IS) technical support personnel during normal business hours (published prime shift hours) of

your Ricoh support center. This assistance is not available to your end users. Ricoh provides Severity 1 assistance 24 hours a day, every day of the year.

Software maintenance does not include assistance for the design and development of applications, program modifications, print data-streams, your use of programs in other than their specified supported operating environment, or failures caused by products for which Ricoh is not responsible under this agreement.

### **Limited Warranty**

Ricoh warrants that when the program is used in the specified operating environment, it will conform to its specifications. The warranty applies only to the unmodified portion of the program. Ricoh does not warrant uninterrupted or error-free operation of the program or that Ricoh will correct all program defects. You are responsible for the results obtained from the use of the program. Ricoh may provide you with access to databases containing information on known program defects, defect corrections, restrictions, and bypasses at no additional charge. Consult the Ricoh Software Support Handbook for further information at

[http://www.infoprint.com/internet/comnelit.nsf/Files/Software\\_Support\\_Handbook/\\$File/Software\\_Support\\_Handbook.pdf](http://www.infoprint.com/internet/comnelit.nsf/Files/Software_Support_Handbook/$File/Software_Support_Handbook.pdf)

Ricoh will maintain this information for at least one year after the original licensee acquires the program.

**Money-back Guarantee:** If for any reason you are dissatisfied with the program and you are the original licensee, you may obtain a refund of the amount you paid for it; if within 30 days of your invoice date you return the program and invoice or a copy thereof to the party from whom you obtained it. If you download the program, you may contact the party from whom you acquired it for instructions on how to obtain the refund.

### **Trademarks**

---

These terms are trademarks or registered trademarks of Ricoh Co., Ltd., in the United States, other countries, or both:

- AFP
- InfoPrint
- Ricoh

These terms are trademarks or registered trademarks of International Business Machines Corporation in the United States, other countries, or both:

- IBM
- DB2
- PSF
- z/OS

Adobe, the Adobe logo, PostScript, and the PostScript logo are either registered trademarks or trademarks of Adobe Systems Incorporated in the United States and/or other countries.

Intel, Intel Inside (logos) are trademarks of Intel Corporation in the United States, other countries, or both.

Xerox is a registered trademark of the Xerox Corporation in the United States, other countries, or both.

Kodak is a registered trademark of the Eastman Kodak Company in the United States, other countries, or both.

DocuSP® is a trademark of Xerox in the United States and other countries.

Microsoft, Windows, Windows XP, and the Windows logo are trademarks of Microsoft Corporation in the United States, other countries, or both.

Linux is a registered trademark of Linus Torvalds in the United States, other countries, or both.

Other company, product, or service names may be trademarks or service marks of others.