

---

## Ricoh ProcessDirector V3.0.0

---

### Note:

This document updated on April 25, 2013 with the following change:

- The PDF Plug-in Utility requires Sun Java Version 7 Update 6 or above
- Ricoh ProcessDirector can now be marketed in China and Japan

This document updated on April 25, 2013 with the following changes:

- Changed “Language Support”
- Workflow Editor limitation with AIX

---

## Overview

---

Ricoh ProcessDirector is an extensible, configurable output process management system that lets you start small and grow over time. With core capabilities plus optional add-on features, Ricoh ProcessDirector allows flexible control of your print and mail production processes. It can streamline operations, improve process integrity, enhance operator productivity, reduce errors, and help lower costs. Ricoh ProcessDirector is also the backbone software of Ricoh Automated Document Factory solutions: Mailroom Integrity, Postal Optimization and Output Management.

This release of Ricoh ProcessDirector features a new visual interface to build workflows. The new workflow builder allows you to define rules to branch inside one workflow to different steps based on values of job properties. For example, you can set up the same workflow to process PDF and AFP jobs with different processing performed based on the data stream type.

With Ricoh ProcessDirector, you can meet production commitments and adapt to unexpected changes without adding staff, shifts, or equipment. Instead, move jobs easily across multi-vendor machines, datastreams, and sites to improve asset utilization. Boost productivity with the capability to:

- Drive printers and inserters more efficiently
- Avoid missing deadlines and service level agreements
- Bring in new types of work
- Be prepared for unexpected disasters
- Integrate with other business systems

## Highlights

- Updated and redesigned interface for building workflows
- Added support for highly sophisticated, logic based cutsheet finishing
- Streamlined install process

## Announce and General Availability Dates

---

**Planned Announce Date: February 12, 2013**

**Planned Availability Dates: March 29, 2013**

## Item Numbers

---

Item	Description
5765-H30	Ricoh ProcessDirector
5765-H30-OC001	Base Platform Option
5765-H30-0001W	Ricoh ProcessDirector for Windows
5765-H30-0002L	Ricoh ProcessDirector for Linux
5765-H30-0003A	Ricoh ProcessDirector for AIX
OC002	Optional Features
5765-H30-0002	Reports
5765-H30-0003	Service Level Agreements
5765-H30-0004	Advanced Transform InputPDF
5765-H30-0005	Advanced Transform InputPCL
5765-H30-0006	Advanced Transform InputAFP
5765-H30-0007	Advanced Transform InputPS
5765-H30-0008	Advanced Transform OutputPDF
5765-H30-0009	Advanced Transform OutputPCL
5765-H30-0010	Advanced Transform OutputPS
5765-H30-0011	Advanced Transform OutputAFP
5765-H30-0012	PitStopConnect
5765-H30-0013	Ultimate Impostrip Connect
5765-H30-0014	PDF Mailroom Integrity
5765-H30-0015	InkEstimation
5765-H30-0016	InkSavvy
5765-H30-0017	InkSavvy 5 License Pack

5765-H30-0018	InkSavvy 5+ License
5765-H30-0019	AFP Editor
5765-H30-0020	AFP Indexer
5765-H30-0021	Command Center
5765-H30-0022	Designer
5765-H30-0023	Ricoh AFP to PDF
5765-H30-0024	Ricoh PCL to AFP
5765-H30-0025	Ricoh SAP to AFP
5765-H30-0026	PostScript/PDF to AFP
5765-H30-0027	Secondary Server Support
5765-H30-0029	Whitespace Manager
5765-H30-0030	Insertter Level I
5765-H30-0031	Insertter Level II
5765-H30-0032	Mailroom integrity level I
5765-H30-0033	Mailroom integrity level II
5765-H30-0034	Manufacturing Optimization
5765-H30-0035	WPM
<b>OC003</b>	<b>Printer Attachments</b>
5765-H30-0037	Lo-speed Print Engine Attach
5765-H30-0038	Med-speed Prt Engine Attach
5765-H30-0039	High Speed Print Engine Attach
5765-H30-0040	Ultra High Speed Attachment
5765-H30-0041	Group of 25 Workgroup Printer Attachment
5765-H30-0042	Group of 50 Workgroup Printer Attachment
5765-H30-0043	Group of 100 Workgroup Printer Attachment
5765-H30-0044	Group of 200 Workgroup Printer Attachment
<b>OC004</b>	<b>Supplies Features</b>
5765-H30-S0001W	Supply Feature - ProcessDirector for Windows
5765-H30-S0002L	Supply Feature - ProcessDirector for Linux
5765-H30-S0003A	Supply Feature - ProcessDirector for AIX
5765-H30-S0004	Supply Feature - Service Level Agreements
5765-H30-S0006	Supply Feature - Reports
5765-H30-S0007	Supply Feature - AdvancedTransformEngine
5765-H30-S0008	Supply Feature - PitStopConnect
5765-H30-S0009	Supply Feature - Ultimate Imposition Connect
5765-H30-S0010	Supply Feature - PDF Mailroom Integrity
5765-H30-S0011	Supply Feature - Command Center
5765-H30-S0012	Supply Feature - AFP Indexer
5765-H30-S0013	Supply Feature - Ricoh AFP to PDF

5765-H30-S0014	Supply Feature - AFP Editor
5765-H30-S0015	Supply Feature - Designer
5765-H30-S0016	Supply Feature - Whitespace Manager
5765-H30-S0017	Supply Feature - Ricoh SAP to AFP
5765-H30-S0018	Supply Feature - Postscript/PDF to AFP
5765-H30-S0019	Supply Feature - Secondary Server Support
5765-H30-S0020	Supply Feature - Ricoh PCL to AFP
5765-H30-S0021	Supply Feature - Inserter Level I
5765-H30-S0022	Supply Feature - Inserter Level II
5765-H30-S0023	Supply Feature - Mailroom Integrity Level I
5765-H30-S0024	Supply Feature - Mailroom Integrity Level II
5765-H30-S0025	Supply Feature - Manufacturing Optimization
5765-H30-S0026	Supply Feature - WPM
5765-H30-S0027	Supply Feature - InkEstimation
5765-H30-S0028	Supply Feature - InkSavvy Upgrade
5765-H30-S0029	Supply Feature - InkSavvy 5 License Pack
5765-H30-S0030	Supply Feature - InkSavvy 5+ License
5765-H30-T0001	Process Director Trial License
OC005	Software Maintenance - 1 Year Registration
5639-S19-0001	ProcessDirector 1 Year Registration - AIX Base
5639-S19-0002	Reports -1 Year Registration
5639-S19-0003	Service Level Agreements - 1 Year Registration
5639-S19-0004	InputPDF - 1 Year Registration
5639-S19-0005	InputPCL - 1 Year Registration
5639-S19-0006	InputAFP - 1 Year Registration
5639-S19-0007	InputPS - 1 Year Registration
5639-S19-0008	OutputPDF - 1 Year Registration
5639-S19-0009	OutputPCL - 1 Year Registration
5639-S19-0010	OutputPS - 1 Year Registration
5639-S19-0011	PitStopConnect - 1 Year Registration
5639-S19-0012	Ultimate Impostrip Connect - 1 Year Registration
5639-S19-0013	PDF Mailroom Integrity - 1 Year Registration
5639-S19-0014	AFP Editor - 1 Year Registration
5639-S19-0015	AFP Indexer - 1 Year Registration
5639-S19-0016	Command Center - 1 Year Registration
5639-S19-0017	Designer - 1 Year Registration
5639-S19-0020	Ricoh AFP to PDF - 1 Year Registration
5639-S19-0021	Ricoh PCL to AFP - 1 Year Registration
5639-S19-0022	Ricoh SAP to AFP - 1 Year Registration

5639-S19-0023	Postscript/PDF to AFP - 1 Year Registration
5639-S19-0024	Secondary Server Support - 1 Year Registration
5639-S19-0026	Whitespace Manager - 1 Year Registration
5639-S19-0027	Insertter Level I - 1 Year Registration
5639-S19-0028	Insertter Level II - 1 Year Registration
5639-S19-0029	Mailroom integrity level I - 1 Year Registration
5639-S19-0030	Mailroom integrity level II - 1 Year Registration
5639-S19-0031	Manufacturing Optimization - 1 Year Registration
5639-S19-0032	OutputAFP - 1 Year Registration
5639-S19-0033	WPM - 1 Year Registration
5639-S19-0142	InkSavvy - 1 Year Registration
5639-S19-0138	InkSavvy 5 License Pack - 1 Year Registration
5639-S19-0139	InkSavvy 5+ License - 1 Year Registration
5639-S19-0122	Lo-speed Print Engine Attach - 1 Year Registration
5639-S19-0123	Med-speed Prt Engine Attach - 1 Year Registration
5639-S19-0124	High Speed Print Engine Attach - 1 Year Registration
5639-S19-0125	Ultra High Speed Attachment - 1 Year Registration
5639-S19-0126	Group of 25 Workgroup Printer Attachment - 1 Year Registration
5639-S19-0127	Group of 50 Workgroup Printer Attachment - 1 Year Registration
5639-S19-0128	Group of 100 Workgroup Printer Attachment - 1 Year Registration
5639-S19-0129	Group of 200 Workgroup Printer Attachment - 1 Year Registration
5639-S19-0145	InkEstimation - 1 Year Registration
5639-S19-0147	ProcessDirector 1 Year Registration - Linux Base
5639-S19-0148	ProcessDirector 1 Year Registration - Windows Base
5765 H30 OC006	ProcessDirector Software Maintenance 1 Year Renewal
5639-S19-0034	ProcessDirector 1 Year Renewal - AIX Base
5639-S19-0035	Reports - 1 Year Renewal
5639-S19-0036	Service Level Agreements - 1 Year Renewal
5639-S19-0037	InputPDF - 1 Year Renewal
5639-S19-0038	InputPCL - 1 Year Renewal
5639-S19-0039	InputAFP - 1 Year Renewal
5639-S19-0040	InputPS - 1 Year Renewal
5639-S19-0041	OutputPDF - 1 Year Renewal
5639-S19-0042	OutputPCL - 1 Year Renewal
5639-S19-0043	OutputPS - 1 Year Renewal
5639-S19-0044	PitStopConnect - 1 Year Renewal
5639-S19-0045	Ultimate Impostrip Connect - 1 Year Renewal
5639-S19-0046	PDF Mailroom Integrity - 1 Year Renewal
5639-S19-0047	AFP Editor - 1 Year Renewal

5639-S19-0048	AFP Indexer - 1 Year Renewal
5639-S19-0049	Command Center - 1 Year Renewal
5639-S19-0050	Designer - 1 Year Renewal
5639-S19-0051	Ricoh AFP to PDF - 1 Year Renewal
5639-S19-0052	Ricoh PCL to AFP - 1 Year Renewal
5639-S19-0053	Ricoh SAP to AFP - 1 Year Renewal
5639-S19-0054	Postscript/PDF to AFP - 1 Year Renewal
5639-S19-0055	Secondary Server Support - 1 Year Renewal
5639-S19-0057	Whitespace Manager - 1 Year Renewal
5639-S19-0058	Insertter Level I - 1 Year Renewal
5639-S19-0059	Insertter Level II - 1 Year Renewal
5639-S19-0060	Mailroom integrity level I - 1 Year Renewal
5639-S19-0061	Mailroom integrity level II - 1 Year Renewal
5639-S19-0062	Manufacturing Optimization - 1 Year Renewal
5639-S19-0063	OutputAFP - 1 Year Renewal
5639-S19-0065	WPM - 1 Year Renewal
5639-S19-0143	InkSavvy - 1 Year Renewal
5639-S19-0140	InkSavvy 5 License Pack - 1 Year Renewal
5639-S19-0141	InkSavvy 5+ License - 1 Year Renewal
5639-S19-0130	Lo-speed Print Engine Attach - 1 Year Renewal
5639-S19-0131	Med-speed Prt Engine Attach - 1 Year Renewal
5639-S19-0132	High Speed Print Engine Attach - 1 Year Renewal
5639-S19-0133	Ultra High Speed Attachment - 1 Year Renewal
5639-S19-0134	Group of 25 Workgroup Printer Attachment - 1 Year Renewal
5639-S19-0135	Group of 50 Workgroup Printer Attachment - 1 Year Renewal
5639-S19-0136	Group of 100 Workgroup Printer Attachment - 1 Year Renewal
5639-S19-0137	Group of 200 Workgroup Printer Attachment - 1 Year Renewal
5639-S19-0146	InkEstimation - 1 Year Renewal
5639-S19-0149	ProcessDirector 1 Year Renewal - Linux Base
5639-S19-0150	ProcessDirector 1 Year Renewal - Windows Base
5765 H30 OC007	Software Maintenance 1 Year After License
5639-S20-0066	ProcessDirector 1 Year After License - AIX Base
5639-S20-0067	Group of 50 Workgroup Printer Attachment - 1 Year After License
5639-S20-0068	Lo-speed Print Engine Attach - 1 Year After License
5639-S20-0069	Med-speed Prt Engine Attach - 1 Year After License
5639-S20-0070	High Speed Print Engine Attach - 1 Year After License
5639-S20-0071	Ultra High Speed Attachment - 1 Year After License
5639-S20-0072	Group of 25 Workgroup Printer Attachment - 1 Year After License
5639-S20-0073	Group of 200 Workgroup Printer Attachment - 1 Year After License

5639-S20-0074	Group of 100 Workgroup Printer Attachment - 1 Year After License
5639-S20-0075	AFP Editor - 1 Year After License
5639-S20-0076	AFP Indexer - 1 Year After License
5639-S20-0077	Command Center - 1 Year After License
5639-S20-0078	Designer - 1 Year After License
5639-S20-0079	Ricoh AFP to PDF - 1 Year After License
5639-S20-0080	Ricoh PCL to AFP - 1 Year After License
5639-S20-0081	Ricoh SAP to AFP - 1 Year After License
5639-S20-0082	Postscript/PDF to AFP - 1 Year After License
5639-S20-0084	Reports - 1 Year After License
5639-S20-0085	Secondary Server Support - 1 Year After License
5639-S20-0087	Service Level Agreements - 1 Year After License
5639-S20-0088	Whitespace Manager - 1 Year After License
5639-S20-0089	Insertter Level I - 1 Year After License
5639-S20-0090	Insertter Level II - 1 Year After License
5639-S20-0091	Mailroom integrity level I - 1 Year After License
5639-S20-0092	Mailroom integrity level II - 1 Year After License
5639-S20-0093	Manufacturing Optimization - 1 Year After License
5639-S20-0094	InputPDF - 1 Year After License
5639-S20-0095	InputPCL - 1 Year After License
5639-S20-0096	InputAFP - 1 Year After License
5639-S20-0097	InputPS - 1 Year After License
5639-S20-0098	OutputPDF - 1 Year After License
5639-S20-0099	OutputPCL - 1 Year After License
5639-S20-0100	OutputAFP - 1 Year After License
5639-S20-0101	OutputPS - 1 Year After License
5639-S20-0102	PitStopConnect - 1 Year After License
5639-S20-0103	InkEstimation - 1 Year After License
5639-S20-0104	WPM - 1 Year After License
5639-S20-0105	Ultimate Impostrip Connect - 1 Year After License
5639-S20-0106	InkSavvy 5 License Pack - 1 Year After License
5639-S20-0107	InkSavvy 5+ License - 1 Year After License
5639-S20-0108	PDF Mailroom Integrity - 1 Year After License
5639-S20-0109	InkSavvy - 1 Year After License
5639-S20-0110	ProcessDirector 1 Year After License - Linux Base
5639-S20-0111	ProcessDirector 1 Year After License - Windows Base
5765 H30 OC008	Software Maintenance 3 Year Registration
5639-S22-0109	ProcessDirector 3 Year Registration - AIX Base
5639-S22-0110	Reports - 3 Year Registration

5639-S22-0111	Service Level Agreements - 3 Year Registration
5639-S22-0112	InputPDF - 3 Year Registration
5639-S22-0113	InputPCL - 3 Year Registration
5639-S22-0114	InputAFP - 3 Year Registration
5639-S22-0115	InputPS - 3 Year Registration
5639-S22-0116	OutputPDF - 3 Year Registration
5639-S22-0117	OutputPCL - 3 Year Registration
5639-S22-0118	OutputPS - 3 Year Registration
5639-S22-0119	PitStopConnect - 3 Year Registration
5639-S22-0120	Ultimate Impostrip Connect - 3 Year Registration
5639-S22-0121	PDF Mailroom Integrity - 3 Year Registration
5639-S22-0122	Lo-speed Print Engine Attach - 3 Year Registration
5639-S22-0123	Med-speed Prt Engine Attach - 3 Year Registration
5639-S22-0124	High Speed Print Engine Attach - 3 Year Registration
5639-S22-0125	Ultra High Speed Attachment - 3 Year Registration
5639-S22-0126	Group of 25 Workgroup Printer Attachment - 3 Year Registration
5639-S22-0127	Group of 50 Workgroup Printer Attachment - 3 Year Registration
5639-S22-0128	Group of 100 Workgroup Printer Attachment - 3 Year Registration
5639-S22-0129	Group of 200 Workgroup Printer Attachment - 3 Year Registration
5639-S22-0130	AFP Editor - 3 Year Registration
5639-S22-0131	AFP Indexer - 3 Year Registration
5639-S22-0132	Command Center - 3 Year Registration
5639-S22-0133	Designer - 3 Year Registration
5639-S22-0134	Ricoh AFP to PDF - 3 Year Registration
5639-S22-0135	Ricoh PCL to AFP - 3 Year Registration
5639-S22-0136	Ricoh SAP to AFP - 3 Year Registration
5639-S22-0137	Postscript/PDF to AFP - 3 Year Registration
5639-S22-0138	Secondary Server Support - 3 Year Registration
5639-S22-0140	Whitespace Manager - 3 Year Registration
5639-S22-0141	Insertter Level I - 3 Year Registration
5639-S22-0142	Insertter Level II - 3 Year Registration
5639-S22-0143	Mailroom integrity level I - 3 Year Registration
5639-S22-0144	Mailroom integrity level II - 3 Year Registration
5639-S22-0145	Manufacturing Optimization - 3 Year Registration
5639-S22-0146	OutputAFP - 3 Year Registration
5639-S22-0147	InkEstimation - 3 Year Registration
5639-S22-0148	WPM - 3 Year Registration
5639-S22-0152	InkSavvy - 3 Year Registration
5639-S22-0150	InkSavvy 5 License Pack - 3 Year Registration



5639-S22-0151	InkSavvy 5+ License - 3 Year Registration
5639-S22-0153	ProcessDirector 3 Year Registration - Linux Base
5639-S22-0154	ProcessDirector 3 Year Registration - Windows Base
5765 H30 OC009	Software Maintenance 3 Year Renewal
5639-S23-0152	ProcessDirector - 3 Year Renewal AIX Base
5639-S23-0153	Reports - 3 Year Renewal
5639-S23-0154	Service Level Agreements - 3 Year Renewal
5639-S23-0155	InputPDF - 3 Year Renewal
5639-S23-0156	InputPCL - 3 Year Renewal
5639-S23-0157	InputAFP - 3 Year Renewal
5639-S23-0158	InputPS - 3 Year Renewal
5639-S23-0159	OutputPDF - 3 Year Renewal
5639-S23-0160	OutputPCL - 3 Year Renewal
5639-S23-0161	OutputPS - 3 Year Renewal
5639-S23-0162	PitStopConnect - 3 Year Renewal
5639-S23-0163	Ultimate Impostrip Connect - 3 Year Renewal
5639-S23-0164	PDF Mailroom Integrity - 3 Year Renewal
5639-S23-0165	Lo-speed Print Engine Attach - 3 Year Renewal
5639-S23-0166	Med-speed Prt Engine Attach - 3 Year Renewal
5639-S23-0167	High Speed Print Engine Attach - 3 Year Renewal
5639-S23-0168	Ultra High Speed Attachment - 3 Year Renewal
5639-S23-0169	Group of 25 Workgroup Printer Attachment - 3 Year Renewal
5639-S23-0170	Group of 50 Workgroup Printer Attachment - 3 Year Renewal
5639-S23-0171	Group of 100 Workgroup Printer Attachment - 3 Year Renewal
5639-S23-0172	Group of 200 Workgroup Printer Attachment - 3 Year Renewal
5639-S23-0173	AFP Editor - 3 Year Renewal
5639-S23-0174	AFP Indexer - 3 Year Renewal
5639-S23-0175	Command Center - 3 Year Renewal
5639-S23-0176	Designer - 3 Year Renewal
5639-S23-0177	Ricoh AFP to PDF - 3 Year Renewal
5639-S23-0178	Ricoh PCL to AFP - 3 Year Renewal
5639-S23-0179	Ricoh SAP to AFP - 3 Year Renewal
5639-S23-0180	Postscript/PDF to AFP - 3 Year Renewal
5639-S23-0181	Secondary Server Support - 3 Year Renewal
5639-S23-0183	Whitespace Manager - 3 Year Renewal
5639-S23-0184	Insertter Level I - 3 Year Renewal
5639-S23-0185	Insertter Level II - 3 Year Renewal
5639-S23-0186	Mailroom integrity level I - 3 Year Renewal
5639-S23-0187	Mailroom integrity level II - 3 Year Renewal

5639-S23-0188	Manufacturing Optimization - 3 Year Renewal
5639-S23-0189	OutputAFP - 3 Year Renewal
5639-S23-0190	InkEstimation - 3 Year Renewal
5639-S23-0191	WPM - 3 Year Renewal
5639-S23-0194	InkSavvy - 3 Year Renewal
5639-S23-0192	InkSavvy 5 License Pack - 3 Year Renewal
5639-S23-0193	InkSavvy 5+ License - 3 Year Renewal
5639-S23-0195	ProcessDirector 3 Year Renewal - Linux Base
5639-S23-0196	ProcessDirector 3 Year Renewal - Windows Base
5765 H30 OC010	Software Maintenance 3 Year After License
5639-S24-0194	Lo-speed Print Engine Attach - 3 Year After License
5639-S24-0195	Med-speed Prt Engine Attach - 3 Year After License
5639-S24-0196	Hi-speed Print Engine Attach - 3 Year After License
5639-S24-0197	Ultra High Speed Attachment - 3 Year After License
5639-S24-0198	Group of 25 Workgroup Printer Attachment - 3 Year After License
5639-S24-0199	Group of 50 Workgroup Printer Attachment - 3 Year After License
5639-S24-0200	Group of 100 Workgroup Printer Attachment - 3 Year After License
5639-S24-0201	Group of 200 Workgroup Printer Attachment - 3 Year After License
5639-S24-0202	AFP Editor - 3 Year After License
5639-S24-0203	AFP Indexer - 3 Year After License
5639-S24-0204	Command Center - 3 Year After License
5639-S24-0205	Designer - 3 Year After License
5639-S24-0206	Ricoh AFP to PDF - 3 Year After License
5639-S24-0207	Ricoh PCL to AFP - 3 Year After License
5639-S24-0208	Ricoh SAP to AFP - 3 Year After License
5639-S24-0209	Postscript/PDF to AFP - 3 Year After License
5639-S24-0210	ProcessDirector 3 Year After License - AIX Base
5639-S24-0211	Reports - 3 Year After License
5639-S24-0212	Secondary Server Support - 3 Year After License
5639-S24-0214	Service Level Agreements - 3 Year After License
5639-S24-0215	Whitespace Manager - 3 Year After License
5639-S24-0216	Insertor Level I - 3 Year After License
5639-S24-0217	Insertor Level II - 3 Year After License
5639-S24-0218	Mailroom integrity level I - 3 Year After License
5639-S24-0219	Mailroom integrity level II - 3 Year After License
5639-S24-0220	Manufacturing Optimization - 3 Year After License
5639-S24-0221	InputPDF - 3 Year After License
5639-S24-0222	InputPCL - 3 Year After License
5639-S24-0223	InputAFP - 3 Year After License

5639-S24-0224	InputPS - 3 Year After License
5639-S24-0225	OutputPDF - 3 Year After License
5639-S24-0226	OutputPCL - 3 Year After License
5639-S24-0227	OutputAFP - 3 Year After License
5639-S24-0228	OutputPS - 3 Year After License
5639-S24-0229	PitStopConnect - 3 Year After License
5639-S24-0230	InkEstimation - 3 Year After License
5639-S24-0231	WPM - 3 Year After License
5639-S24-0232	Ultimate Impostrip Connect - 3 Year After License
5639-S24-0233	InkSavvy 5 License Pack - 3 Year After License
5639-S24-0234	InkSavvy 5+ License - 3 Year After License
5639-S24-0235	PDF Mailroom Integrity - 3 Year After License
5639-S24-0236	InkSavvy - 3 Year After License
5639-S24-0237	ProcessDirector 3 Year After License - Linux Base
5639-S24-0238	ProcessDirector 3 Year After License - Windows Base
5765 H30 OC011	Restricted Use Optional Features
5765-H30-R0001	Restricted Use AFP2PDF
5765-H30-R0002	Restricted Use Reports
5765-H30-R0003	Restricted Use PS2AFP
5765-H30-R0004	Restricted Use Designer
5765-H30-R0005	Restricted Use AFP Indexer
5765-H30-R0006	Restricted Use Base License - AIX
5765-H30-R0007	Restricted Use Whitespace Manager
5765-H30-R0008	Restricted Use SAP2AFP
5765-H30-R0009	Restricted Use AFP Editor
5765-H30-R0010	Restricted Use PCL2AFP
5765-H30-R0011	Restricted Use SLA
5765-H30-R0012	Restricted Use Secondary
5765-H30-R0013	Restricted Use Command Center
5765-H30-R0014	Restricted Use Inserter Level I
5765-H30-R0015	Restricted Use Inserter Level II
5765-H30-R0016	Restricted Use Mailroom integrity level I
5765-H30-R0017	Restricted Use Mailroom integrity level II
5765-H30-R0018	Restricted Use Manufacturing Optimization
5765-H30-R0019	Restricted Use InputPDF Advanced Transform
5765-H30-R0020	Restricted Use InputPCL Advanced Transform
5765-H30-R0021	Restricted Use InputAFP Advanced Transform
5765-H30-R0022	Restricted Use InputPS Advanced Transform
5765-H30-R0023	Restricted Use OutputPDF Advanced Transform

5765-H30-R0024	Restricted Use OutputPCL Advanced Transform
5765-H30-R0025	Restricted Use OutputAFP Advanced Transform
5765-H30-R0026	Restricted Use OutputPS Advanced Transform
5765-H30-R0027	Restricted Use PitStopConnect
5765-H30-R0028	Restricted Use InkEstimation
5765-H30-R0029	Restricted Use WPM
5765-H30-R0030	Restricted Use Ultimate Imposstrip Connect
5765-H30-R0031	Restricted Use PDF Mailroom Integrity
5765-H30-R0032	Restricted Use - Linux Base
5765-H30-R0033	Restricted Use - Windows Base
5765-H30-OC012	Ricoh ProcessDirector Restricted Use Software Maintenance - 1 Year Registration
5639-S19-R0236	Restricted Use AFP Editor - 1 Year Registration
5639-S19-R0237	Restricted Use AFP Indexer - 1 Year Registration
5639-S19-R0238	Restricted Use Command Center - 1 Year Registration
5639-S19-R0239	Restricted Use Designer - 1 Year Registration
5639-S19-R0240	Restricted Use AFP2PDF - 1 Year Registration
5639-S19-R0241	Restricted Use PCL2AFP - 1 Year Registration
5639-S19-R0242	Restricted Use SAP2AFP - 1 Year Registration
5639-S19-R0243	Restricted Use PS2AFP - 1 Year Registration
5639-S19-R0244	Restricted Use Base License 1 Year Registration - AIX Base
5639-S19-R0245	Restricted Use Reports - 1 Year Registration
5639-S19-R0246	Restricted Use Secondary - 1 Year Registration
5639-S19-R0247	Restricted Use SLA - 1 Year Registration
5639-S19-R0248	Restricted Use Whitespace Manager - 1 Year Registration
5639-S19-R0249	Restricted Use Inserter Level I - 1 Year Registration
5639-S19-R0250	Restricted Use Inserter Level II - 1 Year Registration
5639-S19-R0251	Restricted Use Mailroom integrity level I - 1 Year Registration
5639-S19-R0252	Restricted Use Mailroom integrity level II - 1 Year Registration
5639-S19-R0253	Restricted Use Manufacturing Optimization - 1 Year Registration
5639-S19-R0254	Restricted Use InputPDF - 1 Year Registration
5639-S19-R0255	Restricted Use InputPCL - 1 Year Registration
5639-S19-R0256	Restricted Use InputAFP - 1 Year Registration
5639-S19-R0257	Restricted Use InputPS - 1 Year Registration
5639-S19-R0258	Restricted Use OutputPDF - 1 Year Registration
5639-S19-R0259	Restricted Use OutputPCL - 1 Year Registration
5639-S19-R0260	Restricted Use OutputAFP - 1 Year Registration
5639-S19-R0261	Restricted Use OutputPS - 1 Year Registration
5639-S19-R0262	Restricted Use PitStopConnect - 1 Year Registration

5639-S19-R0263	Restricted Use InkEstimation - 1 Year Registration
5639-S19-R0264	Restricted Use WPM - 1 Year Registration
5639-S19-R0265	Restricted Use Ultimate Impostrip Connect - 1 Year Registration
5639-S19-R0266	Restricted Use PDF Mailroom Integrity - 1 Year Registration
5639-S19-R0298	Restricted Use 1 Year Registration - Linux Base
5639-S19-R0299	Restricted Use 1 Year Registration - Windows Base
5765-H30-OC013	Ricoh ProcessDirector Restricted Use Software Maintenance - 1 Year Renewal
5639-S19-R0267	Restricted Use AFP Editor - 1 Year Renewal
5639-S19-R0268	Restricted Use AFP Indexer - 1 Year Renewal
5639-S19-R0269	Restricted Use Command Cntr - 1 Year Renewal
5639-S19-R0270	Restricted Use Designer - 1 Year Renewal
5639-S19-R0271	Restricted Use AFP2PDF - 1 Year Renewal
5639-S19-R0272	Restricted Use PCL2AFP - 1 Year Renewal
5639-S19-R0273	Restricted Use SAP2AFP - 1 Year Renewal
5639-S19-R0274	Restricted Use PS2AFP - 1 Year Renewal
5639-S19-R0275	Restricted Use 1 Year Renewal - AIX Base
5639-S19-R0276	Restricted Use Reports - 1 Year Renewal
5639-S19-R0277	Restricted Use Secondary - 1 Year Renewal
5639-S19-R0278	Restricted Use SLA - 1 Year Renewal
5639-S19-R0279	Restricted Use WhitespaceMgr - 1 Year Renewal
5639-S19-R0280	Restricted Use Inserter Level I - 1 Year Renewal
5639-S19-R0281	Restricted Use Inserter Level II - 1 Year Renewal
5639-S19-R0282	Restricted Use Mailroom integrity level I - 1 Year Renewal
5639-S19-R0283	Restricted Use Mailroom integrity level II - 1 Year Renewal
5639-S19-R0284	Restricted Use Manufacturing Optimization - 1 Year Renewal
5639-S19-R0285	Restricted Use InputPDF - 1 Year Renewal
5639-S19-R0286	Restricted Use InputPCL - 1 Year Renewal
5639-S19-R0287	Restricted Use InputAFP - 1 Year Renewal
5639-S19-R0288	Restricted Use InputPS - 1 Year Renewal
5639-S19-R0289	Restricted Use OutputPDF - 1 Year Renewal
5639-S19-R0290	Restricted Use OutputPCL - 1 Year Renewal
5639-S19-R0291	Restricted Use OutputAFP - 1 Year Renewal
5639-S19-R0292	Restricted Use OutputPS - 1 Year Renewal
5639-S19-R0293	Restricted Use PitStopConnect - 1 Year Renewal
5639-S19-R0294	Restricted Use InkEstimation - 1 Year Renewal
5639-S19-R0295	Restricted Use WPM - 1 Year Renewal
5639-S19-R0296	Restricted Use Ultimate Impostrip Connect - 1 Year Renewal
5639-S19-R0297	Restricted Use PDF Mailroom Integrity - 1 Year Renewal

5639-S19-R0300	Restricted Use 1 Year Renewal - Linux Base
5639-S19-R0301	Restricted Use 1 Year Renewal - Windows Base
5765-H30-OC014	Ricoh ProcessDirector Restricted Use Software Maintenance - 1 Year After License
5639-S20-R0298	Restricted Use AFP Editor - 1 Year After License
5639-S20-R0299	Restricted Use AFP Indexer - 1 Year After License
5639-S20-R0300	Restricted Use Command Center - 1 Year After License
5639-S20-R0301	Restricted Use Designer - 1 Year After License
5639-S20-R0302	Restricted Use AFP2PDF - 1 Year After License
5639-S20-R0303	Restricted Use PCL2AFP - 1 Year After License
5639-S20-R0304	Restricted Use SAP2AFP - 1 Year After License
5639-S20-R0305	Restricted Use PS2AFP - 1 Year After License
5639-S20-R0306	Restricted Use Base License 1 Year After License - AIX Base
5639-S20-R0307	Restricted Use Reports - 1 Year After License
5639-S20-R0308	Restricted Use Secondary - 1 Year After License
5639-S20-R0309	Restricted Use SLA - 1 Year After License
5639-S20-R0310	Restricted Use Whitespace Manager - 1 Year After License
5639-S20-R0311	Restricted Use Inserter Level I - 1 Year After License
5639-S20-R0312	Restricted Use Inserter Level II - 1 Year After License
5639-S20-R0313	Restricted Use Mailroom integrity level I - 1 Year After License
5639-S20-R0314	Restricted Use Mailroom integrity level II - 1 Year After License
5639-S20-R0315	Restricted Use Manufacturing Optimization - 1 Year After License
5639-S20-R0316	Restricted Use InputPDF - 1 Year After License
5639-S20-R0317	Restricted Use InputPCL - 1 Year After License
5639-S20-R0318	Restricted Use InputAFP - 1 Year After License
5639-S20-R0319	Restricted Use InputPS - 1 Year After License
5639-S20-R0320	Restricted Use OutputPDF - 1 Year After License
5639-S20-R0321	Restricted Use OutputPCL - 1 Year After License
5639-S20-R0322	Restricted Use OutputAFP - 1 Year After License
5639-S20-R0323	Restricted Use OutputPS - 1 Year After License
5639-S20-R0324	Restricted Use InkEstimation - 1 Year After License
5639-S20-R0325	Restricted Use PitStopConnect - 1 Year After License
5639-S20-R0326	Restricted Use WPM - 1 Year After License
5639-S20-R0327	Restricted Use Ultimate Impostrip Connect - 1 Year After License
5639-S20-R0328	Restricted Use PDF Mailroom Integrity - 1 Year After License
5639-S20-R0329	Restricted Use 1 Year After License - Linux Base
5639-S20-R0330	Restricted Use 1 Year After License - Windows Base
5765-H30-OC015	Ricoh ProcessDirector Restricted Use Software Maintenance - 3 Year Registration
5639-S22-R0329	Restricted Use AFP Editor - 3 Year Registration

5639-S22-R0330	Restricted Use AFP Indexer - 3 Year Registration
5639-S22-R0331	Restricted Use Command Center - 3 Year Registration
5639-S22-R0332	Restricted Use Designer - 3 Year Registration
5639-S22-R0333	Restricted Use AFP2PDF - 3 Year Registration
5639-S22-R0334	Restricted Use PCL2AFP - 3 Year Registration
5639-S22-R0335	Restricted Use SAP2AFP - 3 Year Registration
5639-S22-R0336	Restricted Use PS2AFP - 3 Year Registration
5639-S22-R0337	Restricted Use License 3 Year Registration - AIX Base
5639-S22-R0338	Restricted Use Reports - 3 Year Registration
5639-S22-R0339	Restricted Use Secondary - 3 Year Registration
5639-S22-R0340	Restricted Use SLA - 3 Year Registration
5639-S22-R0341	Restricted Use Whitespace Manager - 3 Year Registration
5639-S22-R0342	Restricted Use Inserter Level I - 3 Year Registration
5639-S22-R0343	Restricted Use Inserter Level II - 3 Year Registration
5639-S22-R0344	Restricted Use Mailroom integrity level I - 3 Year Registration
5639-S22-R0345	Restricted Use Mailroom integrity level II - 3 Year Registration
5639-S22-R0346	Restricted Use Manufacturing Optimization - 3 Year Registration
5639-S22-R0347	Restricted Use InputPDF - 3 Year Registration
5639-S22-R0348	Restricted Use InputPCL - 3 Year Registration
5639-S22-R0349	Restricted Use InputAFP - 3 Year Registration
5639-S22-R0350	Restricted Use InputPS - 3 Year Registration
5639-S22-R0351	Restricted Use OutputPDF - 3 Year Registration
5639-S22-R0352	Restricted Use OutputPCL - 3 Year Registration
5639-S22-R0353	Restricted Use OutputAFP - 3 Year Registration
5639-S22-R0354	Restricted Use OutputPS - 3 Year Registration
5639-S22-R0355	Restricted Use PitStopConnect - 3 Year Registration
5639-S22-R0356	Restricted Use InkEstimation - 3 Year Registration
5639-S22-R0357	Restricted Use WPM - 3 Year Registration
5639-S22-R0358	Restricted Use Ultimate Impostrip Connect - 3 Year Registration
5639-S22-R0359	Restricted Use PDF Mailroom Integrity - 3 Year Registration
5639-S22-R0360	Restricted Use 3 Year Registration - Linux Base
5639-S22-R0361	Restricted Use 3 Year Registration - Windows Base
5765-H30-OC016	Ricoh ProcessDirector Restricted Use Software Maintenance - 3 Year Renewal
5639-S23-R0360	Restricted Use AFP Editor - 3 Year Renewal
5639-S23-R0362	Restricted Use AFP Indexer - 3 Year Renewal
5639-S23-R0364	Restricted Use Command Center - 3 Year Renewal
5639-S23-R0366	Restricted Use Designer - 3 Year Renewal
5639-S23-R0368	Restricted Use AFP2PDF - 3 Year Renewal

5639-S23-R0370	Restricted Use PCL2AFP - 3 Year Renewal
5639-S23-R0372	Restricted Use SAP2AFP - 3 Year Renewal
5639-S23-R0374	Restricted Use PS2AFP - 3 Year Renewal
5639-S23-R0376	Restricted Use License 3 Year Renewal - AIX Base
5639-S23-R0378	Restricted Use Reports - 3 Year Renewal
5639-S23-R0380	Restricted Use Secondary - 3 Year Renewal
5639-S23-R0382	Restricted Use SLA - 3 Year Renewal
5639-S23-R0384	Restricted Use Whitespace Manager - 3 Year Renewal
5639-S23-R0386	Restricted Use Inserter Level I - 3 Year Renewal
5639-S23-R0388	Restricted Use Inserter Level II - 3 Year Renewal
5639-S23-R0390	Restricted Use Mailroom integrity level I - 3 Year Renewal
5639-S23-R0392	Restricted Use Mailroom integrity level II - 3 Year Renewal
5639-S23-R0394	Restricted Use Manufacturing Optimization - 3 Year Renewal
5639-S23-R0396	Restricted Use InputPDF - 3 Year Renewal
5639-S23-R0397	Restricted Use InputPCL - 3 Year Renewal
5639-S23-R0398	Restricted Use InputAFP - 3 Year Renewal
5639-S23-R0399	Restricted Use InputPS - 3 Year Renewal
5639-S23-R0400	Restricted Use OutputPDF - 3 Year Renewal
5639-S23-R0401	Restricted Use OutputPCL - 3 Year Renewal
5639-S23-R0402	Restricted Use OutputAFP - 3 Year Renewal
5639-S23-R0403	Restricted Use OutputPS - 3 Year Renewal
5639-S23-R0404	Restricted Use PitStopConnect - 3 Year Renewal
5639-S23-R0405	Restricted Use InkEstimation - 3 Year Renewal
5639-S23-R0406	Restricted Use WPM - 3 Year Renewal
5639-S23-R0407	Restricted Use Ultimate Impostrip Connect - 3 Year Renewal
5639-S23-R0408	Restricted Use PDF Mailroom Integrity - 3 Year Renewal
5639-S23-R0409	Restricted Use 3 Year Renewal - Linux Base
5639-S23-R0410	Restricted Use 3 Year Renewal - Windows Base
5765-H30-OC017	Ricoh ProcessDirector Restricted Use Software Maintenance - 3 Year After License
5639-S24-R0409	Restricted Use AFP Editor - 3 Year After License
5639-S24-R0411	Restricted Use AFP Indexer - 3 Year After License
5639-S24-R0413	Restricted Use Command Center - 3 Year After License
5639-S24-R0415	Restricted Use Designer - 3 Year After License
5639-S24-R0417	Restricted Use AFP2PDF - 3 Year After License
5639-S24-R0419	Restricted Use PCL2AFP - 3 Year After License
5639-S24-R0421	Restricted Use SAP2AFP - 3 Year After License
5639-S24-R0423	Restricted Use PS2AFP - 3 Year After License
5639-S24-R0425	Restricted Use 3 Year After License - AIX Base



5639-S24-R0427	Restricted Use Reports - 3 Year After License
5639-S24-R0429	Restricted Use Secondary - 3 Year After License
5639-S24-R0431	Restricted Use SLA - 3 Year After License
5639-S24-R0433	Restricted Use Inserter Level I - 3 Year After License
5639-S24-R0435	Restricted Use Inserter Level II - 3 Year After License
5639-S24-R0437	Restricted Use Mailroom integrity level I - 3 Year After License
5639-S24-R0439	Restricted Use Mailroom integrity level II - 3 Year After License
5639-S24-R0441	Restricted Use Manufacturing Optimization - 3 Year After License
5639-S24-R0443	Restricted Use InputPDF - 3 Year After License
5639-S24-R0444	Restricted Use InputPCL - 3 Year After License
5639-S24-R0445	Restricted Use InputAFP - 3 Year After License
5639-S24-R0446	Restricted Use InputPS - 3 Year After License
5639-S24-R0447	Restricted Use OutputPDF - 3 Year After License
5639-S24-R0448	Restricted Use OutputPCL - 3 Year After License
5639-S24-R0449	Restricted Use OutputAFP - 3 Year After License
5639-S24-R0450	Restricted Use OutputPS - 3 Year After License
5639-S24-R0451	Restricted Use PitStopConnect - 3 Year After License
5639-S24-R0452	Restricted Use InkEstimation - 3 Year After License
5639-S24-R0453	Restricted Use WPM - 3 Year After License
5639-S24-R0454	Restricted Use Ultimate Imposstrip Connect - 3 Year After License
5639-S24-R0455	Restricted Use PDF Mailroom Integrity - 3 Year After License
5639-S23-R0456	Restricted Use 3 Year After License - Linux Base
5639-S23-R0457	Restricted Use 3 Year After License - Windows Base
5765 H30 OC018	InfoPrint Manager Upgrade Features
5765-H30-W0001	ProcessDirector - Upgrade from IPM to Ricoh ProcessDirector Windows
5765-H30-W0002	ProcessDirector - Upgrade from IPM to Ricoh ProcessDirector AIX
5765-H30-W0005	Upgrade from IPM to Ricoh ProcessDirector Linux
5765-H30-W0006	Lo-speed Print Engine Attach - Upgrade from IPM
5765-H30-W0009	Med-speed Prt Engine Attach - Upgrade from IPM
5765-H30-W0013	Hi-speed Print Engine Attach - Upgrade from IPM
OC019	Cross Platform Upgrade Optional Features
5765-H30-U0456	ProcessDirector for Windows
5765-H30-U0457	ProcessDirector for Linux
5765-H30-U0459	ProcessDirector for AIX
OC021	Cross-Platform Upgrade - Restricted Use Optional Features
5765-H30-U0486	ProcessDirector for Windows
5765-H30-U0487	ProcessDirector for Linux
5765-H30-U0488	ProcessDirector for AIX

5765-H30-E0001-ENID	Product Key
5765-H30-T0001	Process Director Trial License
OC020	Ricoh ProcessDirector Upgrade - Optional Features
5765-H30-U0001	ProcessDirector for Windows
5765-H30-U0002	ProcessDirector for Linux
5765-H30-U0003	ProcessDirector for AIX
5765-H30-U0004	Reports
5765-H30-U0005	Service Level Agreements
5765-H30-U0006	Advanced Transform InputPDF
5765-H30-U0007	Advanced Transform InputPCL
5765-H30-U0008	Advanced Transform InputAFP
5765-H30-U0009	Advanced Transform InputPS
5765-H30-U0010	Advanced Transform OutputPDF
5765-H30-U0011	Advanced Transform OutputPCL
5765-H30-U0012	Advanced Transform OutputPS
5765-H30-U0013	Advanced Transform OutputAFP
5765-H30-U0014	PitStopConnect
5765-H30-U0015	Ultimate Impostrip Connect
5765-H30-U0016	PDF Mailroom Integrity
5765-H30-U0017	InkEstimation
5765-H30-U0018	InkSavvy
5765-H30-U0019	InkSavvy 5 License Pack
5765-H30-U0020	InkSavvy 5+ License
5765-H30-U0021	AFP Editor
5765-H30-U0022	AFP Indexer
5765-H30-U0023	Command Center
5765-H30-U0024	Designer
5765-H30-U0025	Ricoh AFP to PDF
5765-H30-U0026	Ricoh PCL to AFP
5765-H30-U0027	Ricoh SAP to AFP
5765-H30-U0028	PostScript/PDF to AFP
5765-H30-U0029	Secondary Server Support
5765-H30-U0031	Whitespace Manager
5765-H30-U0032	Insertter Level I
5765-H30-U0033	Insertter Level II
5765-H30-U0034	Mailroom integrity level I
5765-H30-U0035	Mailroom integrity level II
5765-H30-U0036	Manufacturing Optimization
5765-H30-U0037	WPM

5765-H30-OC022	Ricoh ProcessDirector Upgrade - Printer Attachments
5765-H30-U0038	Lo-speed Print Engine Attach
5765-H30-U0039	Med-speed Prt Engine Attach
5765-H30-U0040	High Speed Print Engine Attach
5765-H30-U0041	Ultra High Speed Attachment
5765-H30-U0042	Group of 25 Workgroup Printer Attachment
5765-H30-U0043	Group of 50 Workgroup Printer Attachment
5765-H30-U0044	Group of 100 Workgroup Printer Attachment
5765-H30-U0045	Group of 200 Workgroup Printer Attachment
OC023	Ricoh ProcessDirector Upgrade - Restricted Use Optional Features
5765-H30-U0046	Restricted Use AFP2PDF
5765-H30-U0047	Restricted Use Reports
5765-H30-U0048	Restricted Use PS2AFP
5765-H30-U0049	Restricted Use Designer
5765-H30-U0050	Restricted Use AFP Indexer
5765-H30-U0051	Restricted Use - ProcessDirector for Windows
5765-H30-U0052	Restricted Use - ProcessDirector for Linux
5765-H30-U0053	Restricted Use - ProcessDirector for AIX
5765-H30-U0054	Restricted Use Whitespace Manager
5765-H30-U0055	Restricted Use SAP2AFP
5765-H30-U0056	Restricted Use AFP Editor
5765-H30-U0057	Restricted Use PCL2AFP
5765-H30-U0058	Restricted Use SLA
5765-H30-U0059	Restricted Use Secondary
5765-H30-U0060	Restricted Use Command Center
5765-H30-U0061	Restricted Use Inserter Level I
5765-H30-U0062	Restricted Use Inserter Level II
5765-H30-U0063	Restricted Use Mailroom integrity level I
5765-H30-U0064	Restricted Use Mailroom integrity level II
5765-H30-U0065	Restricted Use Manufacturing Optimization
5765-H30-U0066	Restricted Use InputPDF Advanced Transform
5765-H30-U0067	Restricted Use InputPCL Advanced Transform
5765-H30-U0068	Restricted Use InputAFP Advanced Transform
5765-H30-U0069	Restricted Use InputPS Advanced Transform
5765-H30-U0070	Restricted Use OutputPDF Advanced Transform
5765-H30-U0071	Restricted Use OutputPCL Advanced Transform
5765-H30-U0072	Restricted Use OutputAFP Advanced Transform
5765-H30-U0073	Restricted Use OutputPS Advanced Transform
5765-H30-U0074	Restricted Use PitStopConnect

5765-H30-U0075	Restricted Use InkEstimation
5765-H30-U0076	Restricted Use WPM
5765-H30-U0077	Restricted Use Ultimate Impostrip Connect
5765-H30-U0078	Restricted Use PDF Mailroom Integrity
OC024	Cold Backup Optional Features
5765-H30-C0001	Cold Backup AFP2PDF
5765-H30-C0002	Cold Backup Reports
5765-H30-C0003	Cold Backup PS2AFP
5765-H30-C0004	Cold Backup Designer
5765-H30-C0005	Cold Backup AFP Indexer
5765-H30-C0006	Cold Backup Base License - AIX
5765-H30-C0007	Cold Backup Whitespace Manager
5765-H30-C0008	Cold Backup SAP2AFP
5765-H30-C0009	Cold Backup AFP Editor
5765-H30-C0010	Cold Backup PCL2AFP
5765-H30-C0011	Cold Backup SLA
5765-H30-C0012	Cold Backup Secondary
5765-H30-C0013	Cold Backup Command Center
5765-H30-C0014	Cold Backup Inserter Level I
5765-H30-C0015	Cold Backup Inserter Level II
5765-H30-C0016	Cold Backup Mailroom integrity level I
5765-H30-C0017	Cold Backup Mailroom integrity level II
5765-H30-C0018	Cold Backup Manufacturing Optimization
5765-H30-C0019	Cold Backup InputPDF Advanced Transform
5765-H30-C0020	Cold Backup InputPCL Advanced Transform
5765-H30-C0021	Cold Backup InputAFP Advanced Transform
5765-H30-C0022	Cold Backup InputPS Advanced Transform
5765-H30-C0023	Cold Backup OutputPDF Advanced Transform
5765-H30-C0024	Cold Backup OutputPCL Advanced Transform
5765-H30-C0025	Cold Backup OutputAFP Advanced Transform
5765-H30-C0026	Cold Backup OutputPS Advanced Transform
5765-H30-C0027	Cold Backup PitStopConnect
5765-H30-C0028	Cold Backup InkEstimation
5765-H30-C0029	Cold Backup WPM
C0030	Cold Backup Ultimate Impostrip Connect
5765-H30-C0031	Cold Backup PDF Mailroom Integrity
5765-H30-C0032	Cold Backup - Linux Base
5765-H30-C0033	Cold Backup - Windows Base

## Description

---

Ricoh announces the release of Ricoh ProcessDirector V3.0.0 for AIX, Linux, and Windows. With this new release, we expand the capabilities of the Ricoh ProcessDirector backbone workflow software, offering a redesigned workflow creation interface.

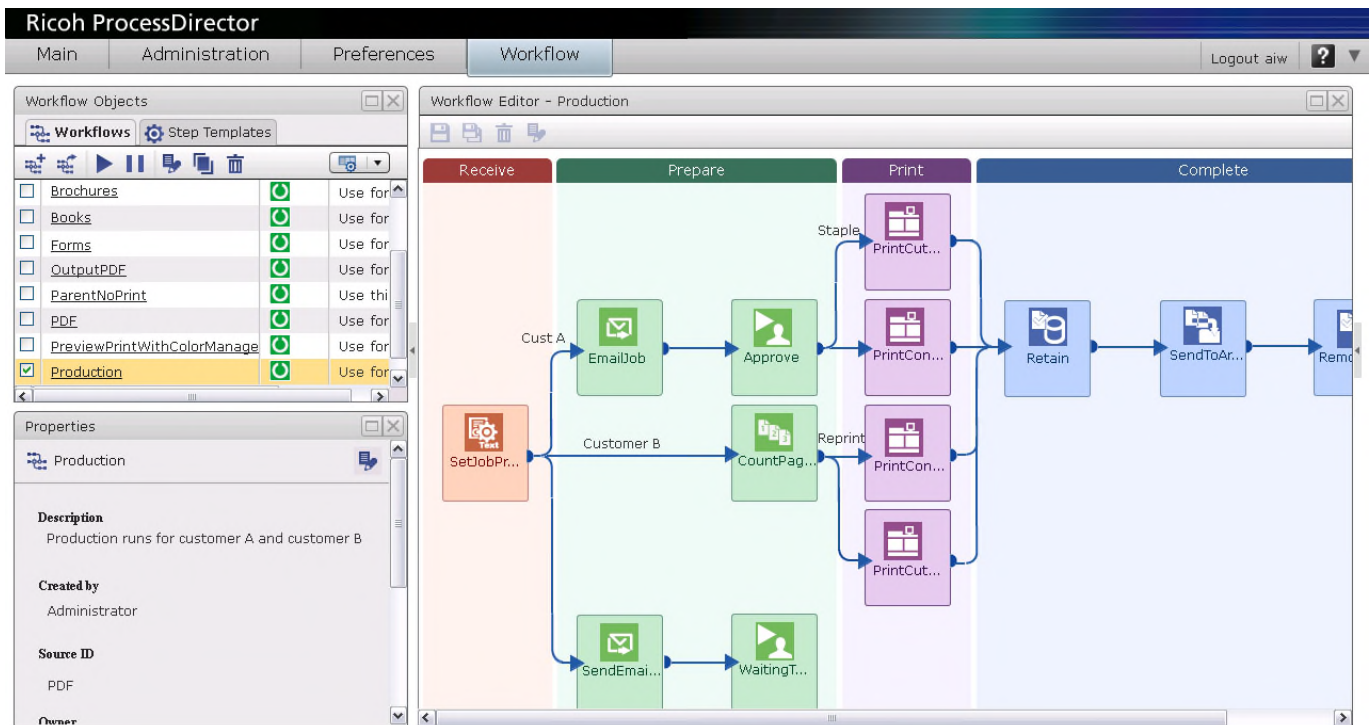
With modular features, including vendor-neutral inserter management, Ricoh ProcessDirector is the premier modular, browser-based, workflow software for job and document management and control. The base functions of Ricoh ProcessDirector include:

- Accepting files from multiple sources: from IBM z/OS® using Download for z/OS or AFP Download Plus, from a variety of hosts by copying files or using ftp to a directory defined as a hot folder and from multiple hosts using a command line print request (such as LPR)
- Managing print queues
- Tracking the production process from receipt of the print file to final delivery
- Using a file viewer to select the pages of AFP and PDF jobs to reprint
- Interacting with other programs, such as:
  - Third-party applications
  - User-written applications

## New Visual Workflow Builder

This new version of ProcessDirector includes a completely redesigned workflow building interface. In the past, workflows (or job types) were created in a linear, top-to-bottom manner. With our new workflow editor, setting up workflows for new jobs is easier than ever. Using visual icons representing each step, you can simply drag and drop each step to design your new automated workflow. You can add rules to decide whether to skip a step or change the job properties used by a subsequent step. For example, if you wanted to check the number of pages in a job, and based on that decide if it should be printed on a cutsheet or a continuous forms printer, you can create that rule and set up that condition.

For customers migrating from prior versions and releases of Ricoh ProcessDirector, existing workflows will be imported automatically. However, with the new power of conditional logic, you can evaluate your existing workflow inventory, and possibly combine and streamline the number of job types you have in your system.



## Cutsheet Support

---

This latest version of Ricoh ProcessDirector features expanded support for Ricoh PostScript and PDF production printers. With the new printer support, you can now define and drive Ricoh cutsheet printers from Ricoh ProcessDirector, including the ability to specify media to be used for the whole job or for selected pages of the job and to request many of the finishing capabilities installed and available on that printing device.

Supported Ricoh PostScript/PDF printers include the currently available models listed below.

imagio MP C6000/ C7500  
MP C6001/C7501  
imagio MP 9000/1100/1350  
Pro 906EX/1106EX/1356EX  
Pro 907EX/1107EX/1357EX  
imagio MP C6000/ C7500  
Pro C550EX/C700EX  
imagio MP C6001/C7501  
imagio MP 9000/1100/1350  
Pro 907EX/1107EX/1357EX  
Pro C900S  
  
Pro C720S  
  
Pro C901S  
  
Pro C651EX/C751EX  
Pro C751

As part of supporting these new printers, new finishing management and media management have been added. The properties of the job – such as media, finishing, and binding -- can be set up as Ricoh ProcessDirector job properties and also set in the JDF job ticket for the job.

These attributes can then be used as simple criteria to help search for work and to schedule jobs for printing on printers with matching capabilities., Supported finishing capabilities include binding (Perfect, Ring, or Ring Punch), folding (Z Fold, C fold, Gate, Saddle, or Parallel), stapling, and punching. Specific support varies based on printer capabilities.

## **Advanced, Logic-based finishing**

When you bring together data, logic, media and finishing, you can bring a whole new level of sophistication to your application production. Imagine that you could mine information from a multi-document print job such as a recipient's name or their member status, and dynamically set what paper it prints on. What if you could simply set up the ability to find the document boundaries within a print job, and if the document is greater than a certain number of pages, request that it be perfect bound? All other documents with fewer pages would be stapled.

Using the optional Ricoh ProcessDirector Plug-in for Adobe Acrobat, you can very easily set up these kinds of rules, visually. You can set up subset stapling and logic based media substitutions based on a sample file, and then automatically apply those rules every time that type of work comes through Ricoh ProcessDirector.

## **Unleash the power of document-level automation**

After you've used the logic-based output support to set up the output, and binding requirements for every document, Ricoh ProcessDirector can use this knowledge to power production optimization. For example, all the documents to be bound can be extracted from the job and run separately and on a different time table.

## **Streamlined Install Process**

This release includes multiple improvements to the installation and migration procedures for Ricoh ProcessDirector. First, we've streamlined the installation of Ricoh ProcessDirector 3.0 to allow you to quickly install the primary server. For existing customers, we've added a new migration path from all supported 2.x releases that dramatically reduces any downtime associated with upgrading your Ricoh ProcessDirector server. In addition, all future features of Ricoh ProcessDirector can be installed separately from the base product. This allows updates to specific features to be performed independent of the base product (for example, installing future Reports feature levels while keeping the base product at 3.0). With this enhancement you can easily update specific features when new function is desirable while minimizing impact to your operations.

Trial versions of most features are shipped with this product and can be easily installed by authorized users for a trial period. No additional download or CD installation is required to activate the trials.

---

## **Accessibility by people with disabilities**

---

Ricoh ProcessDirector Express has the following capabilities for vision-impaired users:



- Allow operation using only the keyboard (except for layout customization and visual workflow builder)
- Communicates all information without using color as the only distinguisher.
- Supports interfaces commonly used by screen magnifiers
- Supports interfaces commonly used by screen readers
- Provides documentation in an accessible format

Ricoh ProcessDirector Express has the following capability for users with mobility impairments or limited hand use:

- Can be operated using only the keyboard with exceptions noted above.

U.S. Section 508 Voluntary Product Accessibility Template (VPAT) can be requested from the Web site at

<http://www.infoprint.com/accessibility>

## SECTION 508 OF THE U.S. REHABILITATION ACT

Ricoh ProcessDirector Express is capable, when used in accordance with Ricoh Production Print Solutions' associated documentation, of satisfying the applicable requirements of Section 508 of the Rehabilitation Act, provided that any assistive technology used with the product properly interoperates with it. A U.S. Section 508 Voluntary Product Accessibility Template (VPAT) can be requested using Ricoh Production Print Solutions' Web site at

<http://www.infoprint.com/accessibility>

The PDF Mailroom Integrity feature does not satisfy the applicable requirements of Section 508 of the Rehabilitation Act.

The AFP Editor, AFP Indexer, Whitespace Manager, and PDF Mailroom Integrity features do not satisfy the applicable requirements of Section 508 of the Rehabilitation Act.

## **Publications**

---

All publications are downloadable from the Ricoh Information Center

<http://www4.infoprintsolutionscompany.com/help/index.jsp>

The Ricoh ProcessDirector for AIX Publications CD, GK4T-4011, contains the following publications:

- Ricoh ProcessDirector for AIX: Planning and Installing, G550-1045
- Ricoh ProcessDirector for AIX: Planning and Installing (Japanese), GA88-4044
- Ricoh ProcessDirector: Integrating with Other Applications, S550-1069
- Ricoh Font Summary, G550-1140
- Ricoh ProcessDirector: License Information, G550-1043

In addition, the CD contains Ricoh ProcessDirector for AIX Information Center.

The Ricoh ProcessDirector for Linux Publications CD, GK4T-4007, contains the following publications:

- Ricoh ProcessDirector for Linux: Planning and Installing, G550-1042
- Ricoh ProcessDirector for Linux: Planning and Installing (Japanese), GA88-4060
- Ricoh ProcessDirector: Integrating with Other Applications, S550-1069
- Ricoh Font Summary, G550-1140
- Ricoh ProcessDirector: License Information, G550-1043

In addition, the CD contains Ricoh ProcessDirector for Linux Information Center.

The Ricoh ProcessDirector for Windows Publications CD, GK4T-4107, contains the following publications:

- Ricoh ProcessDirector for Windows: Planning and Installing, G550-1365
- Ricoh ProcessDirector for Windows: Planning and Installing (Japanese), G550-20013
- Ricoh ProcessDirector: Integrating with Other Applications, S550-1069
- Ricoh Font Summary, G550-1140
- Ricoh ProcessDirector: License Information, G550-1043

In addition, the CD contains Ricoh ProcessDirector for Windows Information Center.

The Manufacturing Optimization feature also includes this publication on its CD:

Ricoh ProcessDirector: Installing and Configuring the Manufacturing Optimization Feature, G550-1070

The PDF Mailroom Integrity feature also includes this publication on its CD:

Ricoh ProcessDirector: Installing, Configuring, and Using the PDF Mailroom Integrity Feature,  
G550-20229

## **Language support**

---

Ricoh ProcessDirector and features are available and supported in the following languages:

- English, French, Italian, German, Spanish, Japanese, Brazilian Portuguese.

## Customer Responsibilities

---

The customer is responsible for installing, configuring, maintaining, and using the Ricoh ProcessDirector™ according to documented procedures, and for using the product in accordance with the Ricoh International Product License Agreement (IPLA), which can be found at this Web link:

<http://www.infoprint.com/licenses>

Additional customer responsibilities can be found in the Software Support Handbook under your responsibilities at this Web Link:

[http://www.infoprint.com/internet/comnelit.nsf/Files/Software\\_Support\\_Handbook/\\$File/Software\\_Support\\_Handbook.pdf](http://www.infoprint.com/internet/comnelit.nsf/Files/Software_Support_Handbook/$File/Software_Support_Handbook.pdf)

## Software Requirements

---

Ricoh ProcessDirector primary server can be installed on a server running one of the following:

- AIX® Version 6.1, Technology Level 06 with SP03 or later; or AIX Version 7.1, Technology Level 00 with SP03 or later, 64 bit
- SUSE Linux Enterprise Server 10 or SUSE Linux Enterprise Server 11 for x86 with latest service packs, 64-bit
- Red Hat Enterprise Linux® 5.6, 5.7, 5.8, 6.1 or 6.2 64-bit
- Windows Server 2008 R2 or later, 64-bit

Ricoh ProcessDirector uses a web browser to access and display the user interface. You can access the interface from the system where the primary server is installed, or from any system running a supported web browser. The supported browser versions for accessing Ricoh ProcessDirector on a client system are as follows:

- Microsoft Internet Explorer 9 and X
- Mozilla Firefox Version 6 or above

The only browser that Ricoh ProcessDirector supports on the AIX operating system is Mozilla Firefox 3.5.13.1; however the workflow editor function in Ricoh ProcessDirector is not supported on that browser. Use supported browsers on other operating systems such as Windows and Linux to access the workflow editor if you are using Ricoh ProcessDirector for AIX.

Ricoh ProcessDirector has a web-based viewer that displays AFP or PDF files to assist you in selecting pages for reprinting. This viewer requires Adobe Reader 9.0 or X on the client system.

Ricoh ProcessDirector can receive jobs for processing from the Job Entry Subsystem (JES) spool on an IBM z/OS host using either the Download for z/OS or AFP Download Plus optional feature of IBM Print Services Facility for z/OS V4.3 (5655-M32).

## Hardware Requirements for Ricoh ProcessDirector V3.0.0

A minimum configuration for Ricoh ProcessDirector V3.0 is a server with:

- One or more 2.8 GHz, or faster, processors.
- DVD-ROM device.
- 4 GB or more RAM (12 GB RAM required for PDF Mailroom Integrity, Inserter or Manufacturing Optimization features).
- Display with minimum resolution of 1280x800
- Connectivity to the LAN.

**The following table contains the hardware requirements for the Ricoh ProcessDirector Transforms.**

Ricoh ProcessDirector									
Transforms	<p>Minimum <b>additional</b> free disk space:</p> <table border="0"> <tr> <td><b>Directory</b></td> <td><b>Free disk space</b></td> </tr> <tr> <td>/tmp</td> <td>500 MB</td> </tr> <tr> <td>/var/infoprint</td> <td>1 GB</td> </tr> <tr> <td>/opt/infoprint</td> <td>1 GB</td> </tr> </table> <p>An additional 512 MB RAM for every two CPU cores, but no less than 2 GB.          For example, if the computer has:</p> <ul style="list-style-type: none"> <li>- One dual-core processor, it must have an additional 2 GB RAM.</li> <li>- Two quad-core processors, it must have an additional 2 GB RAM.</li> <li>- Three quad-core processors, it must have an additional 3 GB RAM.</li> <li>- Four quad-core processors, it must have an additional 4 GB RAM.</li> </ul>	<b>Directory</b>	<b>Free disk space</b>	/tmp	500 MB	/var/infoprint	1 GB	/opt/infoprint	1 GB
<b>Directory</b>	<b>Free disk space</b>								
/tmp	500 MB								
/var/infoprint	1 GB								
/opt/infoprint	1 GB								
Advanced Transform Feature	<p>2 additional GB Memory</p> <p>– Minimum <b>additional</b> free disk space:</p> <table border="0"> <tr> <td><b>Directory</b></td> <td><b>Free disk space</b></td> </tr> <tr> <td>/opt</td> <td>1 GB</td> </tr> <tr> <td>/aiw/aiw1</td> <td>500 MB</td> </tr> </table>	<b>Directory</b>	<b>Free disk space</b>	/opt	1 GB	/aiw/aiw1	500 MB		
<b>Directory</b>	<b>Free disk space</b>								
/opt	1 GB								
/aiw/aiw1	500 MB								
Ricoh ProcessDirector Linux									
Transforms	<p>– Minimum <b>additional</b> free disk space:</p> <table border="0"> <tr> <td><b>Directory</b></td> <td><b>Free disk space</b></td> </tr> </table>	<b>Directory</b>	<b>Free disk space</b>						
<b>Directory</b>	<b>Free disk space</b>								

	<p>/tmp 500 MB          /var/infoprint 1 GB          /opt/infoprint 1 GB  <b>Note:</b> If any of these directories are mounted on the same partition, the sum of the values indicated for those directories needs to be available on that partition.</p> <p>– An additional 512 MB RAM for every two CPU cores, but no less than 2 GB.          For example, if the computer has:</p> <ul style="list-style-type: none"> <li>- One dual-core processor, it must have an additional 2 GB RAM.</li> <li>- Two quad-core processors, it must have an additional 2 GB RAM.</li> <li>- Three quad-core processors, it must have an additional 3 GB RAM.</li> <li>- Four quad-core processors, it must have an additional 4 GB RAM.</li> </ul>						
Advanced Transform Feature	<p>2 additional GB Memory</p> <p>– Minimum <b>additional</b> free disk space:</p> <table border="0"> <thead> <tr> <th style="text-align: left;">Directory</th> <th style="text-align: left;">Free disk space</th> </tr> </thead> <tbody> <tr> <td>/opt</td> <td>1 GB</td> </tr> <tr> <td>/aiw/aiw1</td> <td>500 MB</td> </tr> </tbody> </table>	Directory	Free disk space	/opt	1 GB	/aiw/aiw1	500 MB
Directory	Free disk space						
/opt	1 GB						
/aiw/aiw1	500 MB						
Ricoh ProcessDirector Windows							
Transforms	<p>– Minimum of an additional 10 GB free hard-drive space.          – An additional 512 MB RAM for every CPU core, but no less than 2 GB.          For example, if the computer has:</p> <ul style="list-style-type: none"> <li>- One dual-core processor, it must have an additional 2 GB RAM.</li> <li>- Two quad-core processors, it must have an additional 4 GB RAM.</li> <li>- Three quad-core processors, it must have an additional 6 GB RAM.</li> <li>- Four quad-core processors, it must have an additional 8 GB RAM.</li> </ul>						
Advanced Transform Feature	<p>2 additional GB Memory</p> <p>– Minimum 1.5 GB <b>additional</b> free hard-drive space on the same drive that InfoPrint ProcessDirector is installed on.</p>						

## Supported Printers

The following printers are supported by Ricoh ProcessDirector

- InfoPrint 2090ES Printer
- InfoPrint 2105ES Printer
- InfoPrint 2190 Printer
- InfoPrint 2210 Printer
- InfoPrint 2235 Printer
- InfoPrint 4000 Printer
- InfoPrint 4100 Printer
- InfoPrint 5000 Printer
- InfoPrint 75
- InfoPrint 100
- InfoPrint EMP156
- InfoPrint Pro 907
- InfoPrint C900, C900AFP, and C901
- InfoPrint 907EX
- InfoPrint 1107 and 1107EX
- InfoPrint 1357 and 1357EX
- InfoPrint SP8200
- Imagio MP C6000/ C7500
- Imagio MP C6001/C7501
- Imagio MP 9000/1100/1350
- Pro 906EX/1106EX/1356EX
- Pro 907EX/1107EX/1357EX
- Imagio MP C6000/ C7500 (F4000)
- Pro C550EX/C700EX (E-8100)
- Imagio MP C6001/C7501 (F4010)
- Imagio MP 9000/1100/1350 (F5000)
- Pro 907EX/1107EX/1357EX (F5010)
- Pro C900S (Fiery)
- Pro C900 (Fiery)
- Pro C720S (Fiery)
- Pro C720 (Fiery)
- Pro C900S (E-80)
- Pro C900 (E-80)
- Pro C901S (E-41)
- Pro C901 (E-41)
- Pro C901S (E-81)
- Pro C901 (E-81)
- Pro C651EX/C751EX (E-41A)
- Pro C751 (E-41A)

## **Hardware and Software Requirements for Ricoh ProcessDirector V3.0.0 optional Features**

---

### **Ricoh ProcessDirector PDF Plug-in**

The PDF Plug-in can be installed on a workstation, and requires one of the following:

- Windows XP Professional with SP3 or above – 32 and 64 bit
- Windows 7 Professional with SP1 or above – 32 and 64 bit

In addition, the following are required for the PDF Plug-in feature:

- Adobe Acrobat X Pro version 10.1.1 or above
- Sun Java JRE Sun Java **Version 7 Update 6 or above.**
- 1GB RAM dedicated to the application

### **Ricoh ProcessDirector's Ink Savvy Tool**

The Ink Savvy Tool requires one of the following:

- Windows XP Professional Service Pack 3 or later
- Windows Server 2008
- Windows 7

In addition, the following is required:

- System requirements: Intel® Core™ 2 or similar, 2.4 GHz, 2 x 4 MB Level 2 (L2) cache, 2 GB RAM, 750 GB - 10.000 U/min hard disk drive with at least 5 GB free disk space
- Hardware components: Video card (DVI, supporting DirectX 9c), enabled Direct 3D acceleration, updated driver (**not** Windows default driver), for example, NVIDIA® GeForce 8600 GT; minimum screen resolution 1024 x 768 PX, 32 bit color depth
- Microsoft Internet Explorer 6.0 or higher, Direct X 9c or higher

The server must use the NTFS file system (FAT32 is not supported) with Ink Savvy.

### **Ricoh ProcessDirector's Ink Estimation**

The Ink Estimation feature includes a step template that must be tuned to run on an Application server that meets these requirements:

Operating system requirements (for the ink estimation feature):

- Windows XP Professional Service Pack 3 or later (configured as an Ricoh ProcessDirector Application server)
- Windows 7 (configured as an Ricoh ProcessDirector Application server)
- Windows Server 2008 (Running on the Ricoh ProcessDirector primary server)

Hardware requirements and software requirements (for the ink estimation feature):

- A minimum of two, 2.0 GHz CPU cores
- At least 1 GB RAM for each CPU core
- Enough free disk space to hold the TIFF images created by the EstimateInk step.  
The amount of space needed varies greatly, depending on the size and number of pages that are estimated at the same time.
- Adobe Acrobat X
- Microsoft.Net framework 3.5.1 or later

### **Ricoh ProcessDirector Secondary Server Feature**

The Ricoh ProcessDirector Secondary Server Feature can be installed on a system running one of these operating systems:

- SUSE Linux® Enterprise Server (SLES) 10.0 with SP3 or SP4 or SUSE Linux Enterprise Server 11 for x86 with SP1 or SP2, 64 bit
- AIX® Version 6.1, Technology Level 06 with SP03 or later; or AIX Version 7.1, Technology Level 00 with SP03 or later, 64 bit

Red Hat Enterprise Linux® 5.6, 5.7, 5.8, 6.1 or 6.2

## **Terms and Conditions**

---

Ricoh ProcessDirector is offered by Ricoh Production Print Solutions LLC in the United States and by one or more of its affiliates in selected countries outside of the United States, collectively (“Ricoh”).

The information provided in this announcement letter is for reference and convenience purposes only. The terms and conditions that govern any transaction with Ricoh are contained in the applicable contract documents, such as, but not limited to, the International Program License Agreement (IPLA) and the International Agreement for Acquisition of Software Maintenance.

### **Licensing:**

The IPLA governs your use of the program. Your invoice serves as your Proof of Entitlement. These programs have a One-time-charge (OTC) for use of the program, and an annual (or multi-year if available) renewable charge for ongoing support, which includes telephone assistance, as well as access to updates and new releases of the program as long as you have a current software maintenance agreement in effect.

## **Maintenance Service Offerings**

---



Ricoh includes one year of software maintenance with the initial license acquisition of each program acquired under the terms of International Agreement for Acquisition of Software Maintenance, which does not require customer signatures.

While covered under the terms of the software maintenance agreement, Ricoh provides you assistance for your routine, short-duration installation, and usage (how to) questions, as well as code defect support and access to PTF updates, releases, and versions of the program.

Ricoh provides assistance via telephone and, if available, electronic access, only to your Information Systems (IS) technical support personnel during normal business hours (published prime shift hours) of your Ricoh support center. This assistance is not available to your end users. Ricoh provides Severity 1 assistance 24 hours a day, every day of the year.

Software maintenance does not include assistance for the design and development of applications, program modifications, print data-streams, your use of programs in other than their specified supported operating environment, or failures caused by products for which Ricoh is not responsible under this agreement.

### **Limited Warranty**

Ricoh warrants that when the program is used in the specified operating environment, it will conform to its specifications. The warranty applies only to the unmodified portion of the program. Ricoh does not warrant uninterrupted or error-free operation of the program or that Ricoh will correct all program defects. You are responsible for the results obtained from the use of the program. Ricoh may provide you with access to databases containing information on known program defects, defect corrections, restrictions, and bypasses at no additional charge. Consult the Ricoh Software Support Handbook for further information at

[http://www.infoprint.com/internet/comnelit.nsf/Files/Software\\_Support\\_Handbook/\\$File/Software\\_Support\\_Handbook.pdf](http://www.infoprint.com/internet/comnelit.nsf/Files/Software_Support_Handbook/$File/Software_Support_Handbook.pdf)

Ricoh will maintain this information for at least one year after the original licensee acquires the program.

**Money-back Guarantee:** If for any reason you are dissatisfied with the program and you are the original licensee, you may obtain a refund of the amount you paid for it; if within 30 days of your invoice date you return the program and invoice or a copy thereof to the party from whom you obtained it. If you download the program, you may contact the party from whom you acquired it for instructions on how to obtain the refund.

### **Ricoh ProcessDirector Ordering Information**

---

Ricoh ProcessDirector is composed of a base license, printer attachment features, and optional features.

- Open the Configurator model for Ricoh ProcessDirector (#5765-H30)

- Choose either the Windows (5765-H30-0001W) or Linux (5765-H30-0002L) or the AIX (5765-H30-003A) option
- Choose optional features – one optional feature is required for each base license (5765-H30) that will install the optional feature. The optional features are listed in the “Item Numbers” section of this document.
- Specify the correct number and type of printer attachment features. A printer attachment feature must be ordered for each attached printer. For example, for 5 low-speed printers, the low-speed print attach item (5765-H30-0037) must be ordered with a quantity of five.
- The print speeds for the printer attachment are:
  - 0-62 impressions-per-minute (workgroup)
  - 63-91 impressions-per-minute (low-speed)
  - 92-116 impressions-per-minute (medium-speed)
  - 117 -1499 impressions-per-minute (high-speed)
  - 1500+ impressions-per-minute (ultra-high-speed)
- Specify the desired maintenance item (1 or 3 years)

## **Ink Savvy Ordering**

Ink Savvy is priced per print system (one duplex configuration = one system), and is designed to work exclusively with the InfoPrint 5000 (all models).

The Configurator automatically selects the maintenance items and supply features based upon the specified Optional Features, Upgrade Features, and Printer Attachments.

## **Trademarks**

---

These terms are trademarks or registered trademarks of Ricoh Co., Ltd., in the United States, other countries, or both:

- Advanced Function Presentation
- AFP
- InfoPrint
- Ricoh

These terms are trademarks or registered trademarks of International Business Machines Corporation in the United States, other countries, or both:

- AIX
- IBM

- DB2
- PSF
- z/OS

Adobe, the Adobe logo, PostScript, and the PostScript logo are either registered trademarks or trademarks of Adobe Systems Incorporated in the United States and/or other countries.

Intel and Intel Inside (logos) are trademarks of Intel Corporation in the United States, other countries, or both.

Linux is a registered trademark of Linus Torvalds in the United States, other countries, or both.

Microsoft, Windows, Windows XP, and the Windows logo are trademarks of Microsoft Corporation in the United States, other countries, or both.

Other company, product, or service names may be trademarks or service marks of others.

CRD #SW13-1464-3f  
Ricoh ProcessDirector V3.0.0  
Announce: February 12, 2013

